

C12172.TIF

Street:

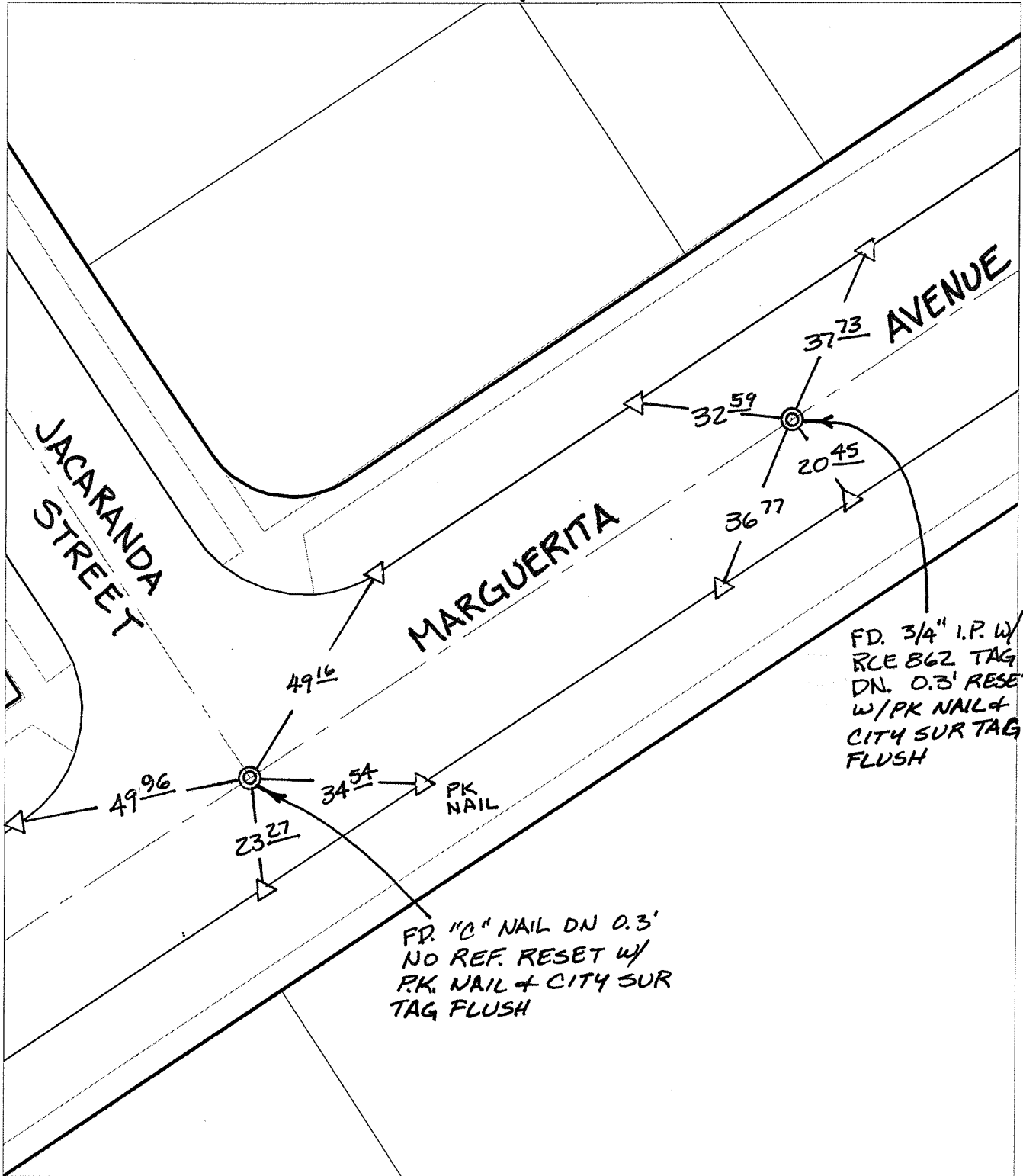
MARGUERITA AVENUE

OFFICIAL USE ONLY

X-Street:

JACARANDA STREET

SWING TIES



FD. 3/4" I.P. W/  
RCE 862 TAG  
DN. 0.3' RESET  
W/PK NAIL +  
CITY SUR TAG  
FLUSH

FD. "C" NAIL DN 0.3'  
NO REF. RESET W/  
P.K. NAIL + CITY SUR  
TAG FLUSH

- ✕ FD. Ramset Nail on T/C
- FD. LD. & TK. on T/C
- FD. "C" Nail on T/C
- Set LD. & TK. on T/C

P.K. and City Engineer tag to be set @  
surface after street construction is  
complete. (If possible)

Scale: 1" = 30'  
Date: 01/30/06  
Drawn by: scurtis  
F.B.:  
TR-Sec: T3SR5W-3

## OFFICIAL TIE PLAT

### CITY OF RIVERSIDE

*These ties are for the purpose of perpetuating the found monumentation. No claim is made as to the relationship of the points or lines shown hereon to true boundary locations.*



Sheet 1 of 1  
Cadme MB: 68-2