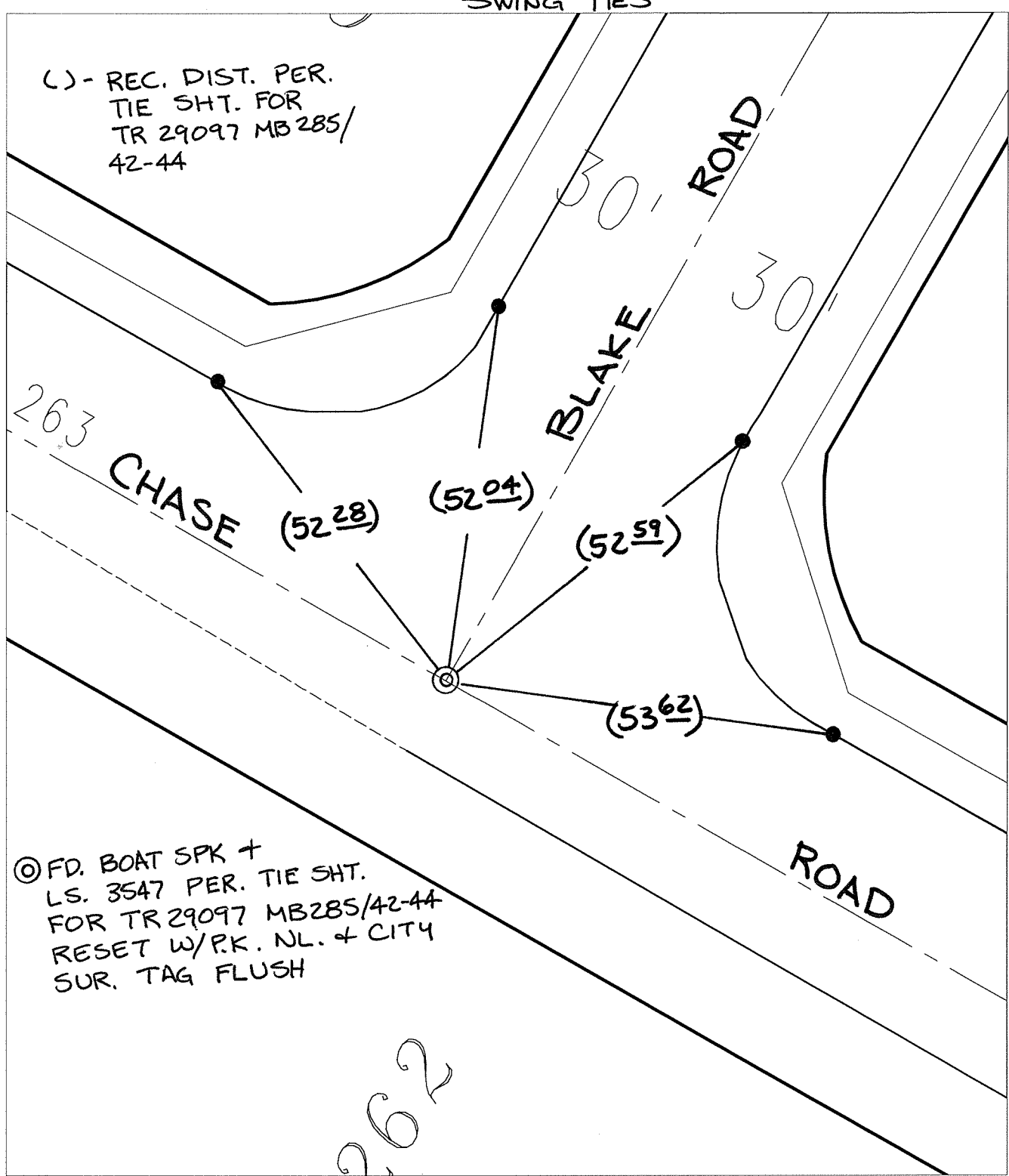


C12177. TIF

Street: CHASE ROAD X-Street: BLAKE ROAD
OFFICIAL USE ONLY

SWING TIES

() - REC. DIST. PER.
TIE SHT. FOR
TR 29097 MB 285/
42-44



⊙ FD. BOAT SPK +
L.S. 3547 PER. TIE SHT.
FOR TR 29097 MB 285/42-44
RESET W/P.K. NL. + CITY
SUR. TAG FLUSH

- ✕ FD. Ramset Nail on T/C ● FD. LD. & TK. on T/C P.K. and City Engineer tag to be set @ surface after street construction is complete. (If possible)
- FD. "C" Nail on T/C ○ Set LD. & TK. on T/C

Scale: 1" = 20'
 Date: 09/18/07
 Drawn by: pw
 F.B.:
 TR-Sec: -

OFFICIAL TIE PLAT

CITY OF RIVERSIDE



These ties are for the purpose of perpetuating the found monumentation. No claim is made as to the relationship of the points or lines shown hereon to true boundary locations.

Sheet 1 of 1
Cadme MB: 11-5