

C12186.TIF

Street:

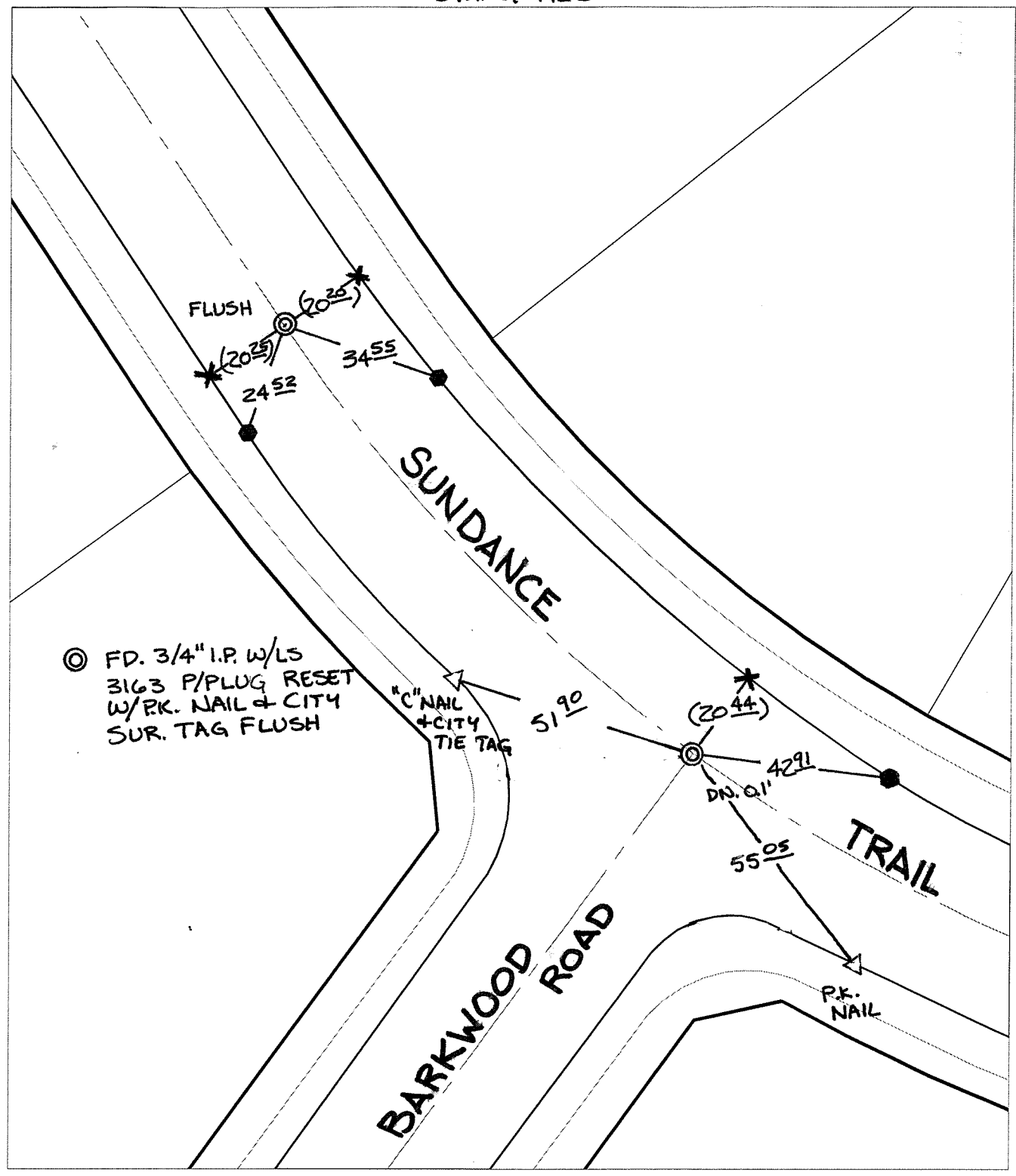
SUNDANCE TRAIL

X-Street:

BARKWOOD ROAD

OFFICIAL USE ONLY

SWING TIES



◎ FD. 3/4" I.P. W/LS
 3163 P/PLUG RESET
 W/PK. NAIL & CITY
 SUR. TAG FLUSH


"C" NAIL
 + CITY
 TIE TAG

- ✕ FD. Ramset Nail on T/C
 - FD. LD. & TK. on T/C
 - FD. "C" Nail on T/C
 - Set LD. & TK. on T/C
- P.K. and City Engineer tag to be set @ surface after street construction is complete. (If possible)

Scale: 1" = 30'
 Date: 01/30/06
 Drawn by: scurtis
 F.B.:
 TR-Sec: T3SR5W-2

OFFICIAL TIE PLAT
 CITY OF RIVERSIDE

These ties are for the purpose of perpetuating the found monumentation. No claim is made as to the relationship of the points or lines shown hereon to true boundary locations.



Sheet 1 of 1
 Cadme MB: 69-1