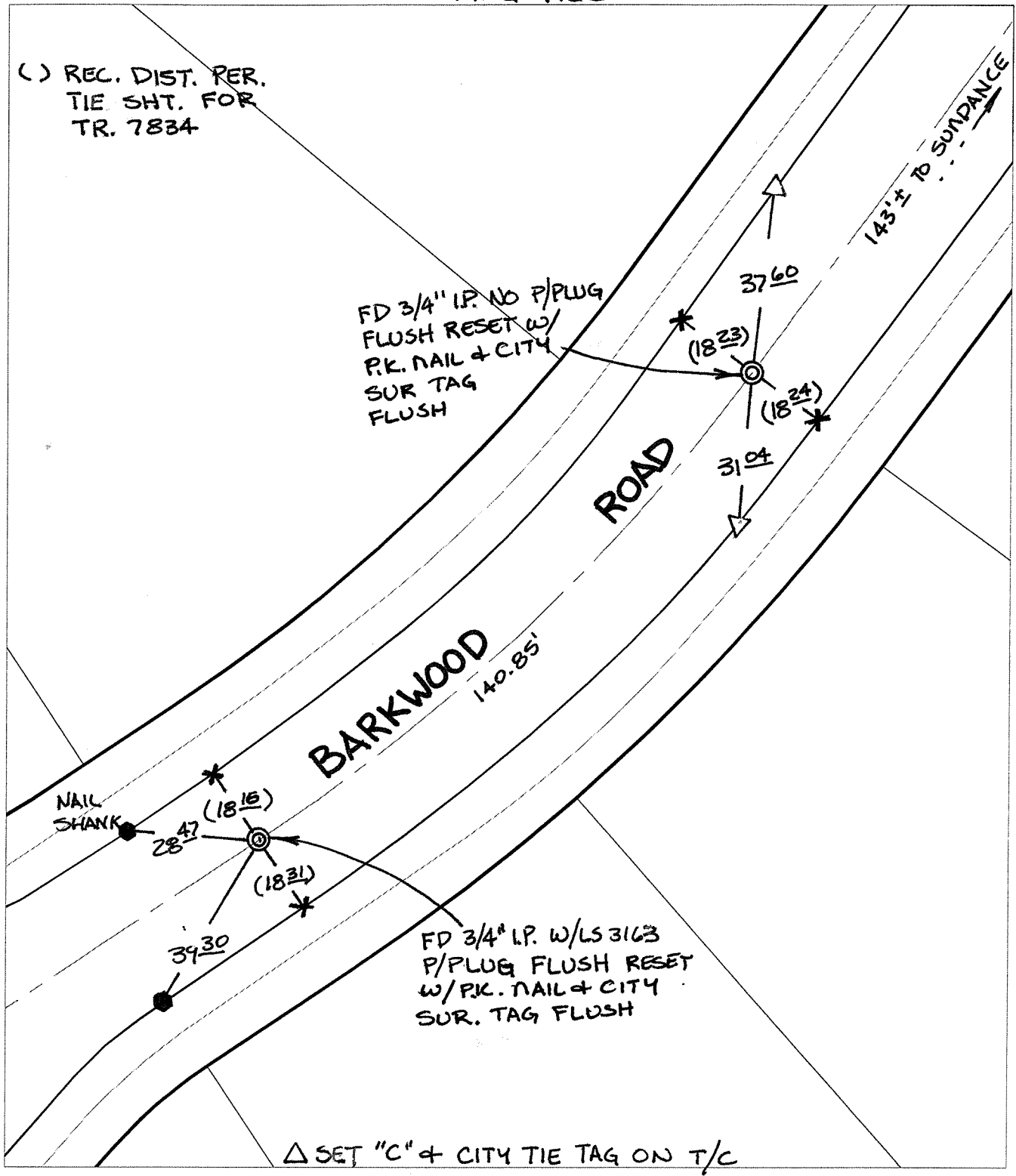


C 12189.71E

Street: BARKWOOD ROAD X-Street BC & EC SW OF SUNDANCE
OFFICIAL USE ONLY

SWING TIES

() REC. DIST. PER. TIE SHT. FOR TR. 7834



- × FD. Ramset Nail on T/C
- FD. LD. & TK. on T/C
- Set LD. & TK. on T/C
- FD. "C" Nail on T/C
- P.K. and City Engineer tag to be set @ surface after street construction is complete. (If possible)

Scale: 1" = 30'

Date: 01/30/06


Drawn by: scurtis

F.B.:

TR-Sec: T3SR5W-2

OFFICIAL TIE PLAT
CITY OF RIVERSIDE

These ties are for the purpose of perpetuating the found monumentation. No claim is made as to the relationship of the points or lines shown hereon to true boundary locations.



Sheet 1 of 1

Cadme MB: 69-1