

C/2190.71F

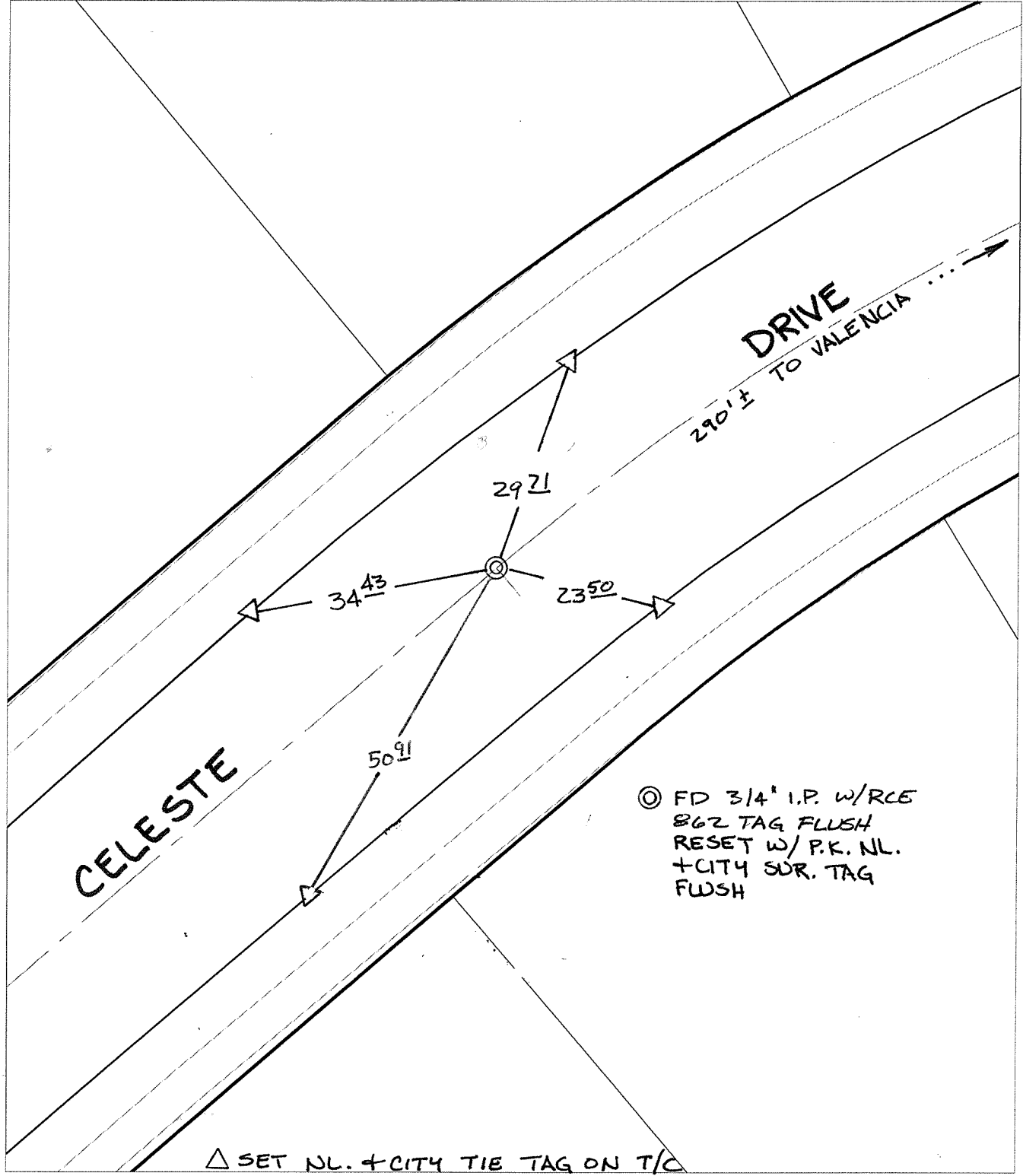
Street:

CELESTE DRIVE

OFFICIAL USE ONLY

X-Street: BC W OF VALENCIA HILL

SWING TIES



⊗ FD 3/4" I.P. w/RCE  
 862 TAG FLUSH  
 RESET w/ P.K. NL.  
 + CITY SUR. TAG  
 FLUSH

- ✕ FD. Ramset Nail on T/C    ● FD. LD. & TK. on T/C
- FD. "C" Nail on T/C      ○ Set LD. & TK. on T/C

P.K. and City Engineer tag to be set @  
 surface after street construction is  
 complete. (If possible)

Scale: 1" = 20'

Date: 01/20/06

Drawn by: scurtis

F.B.:

TR-Sec: T2SR4W-20

## OFFICIAL TIE PLAT

### CITY OF RIVERSIDE

*These ties are for the purpose of perpetuating the found  
 monumentation. No claim is made as to the relationship of  
 the points or lines shown hereon to true boundary locations.*



Sheet 1 of 1

Cadme MB: 27-8