

Street:

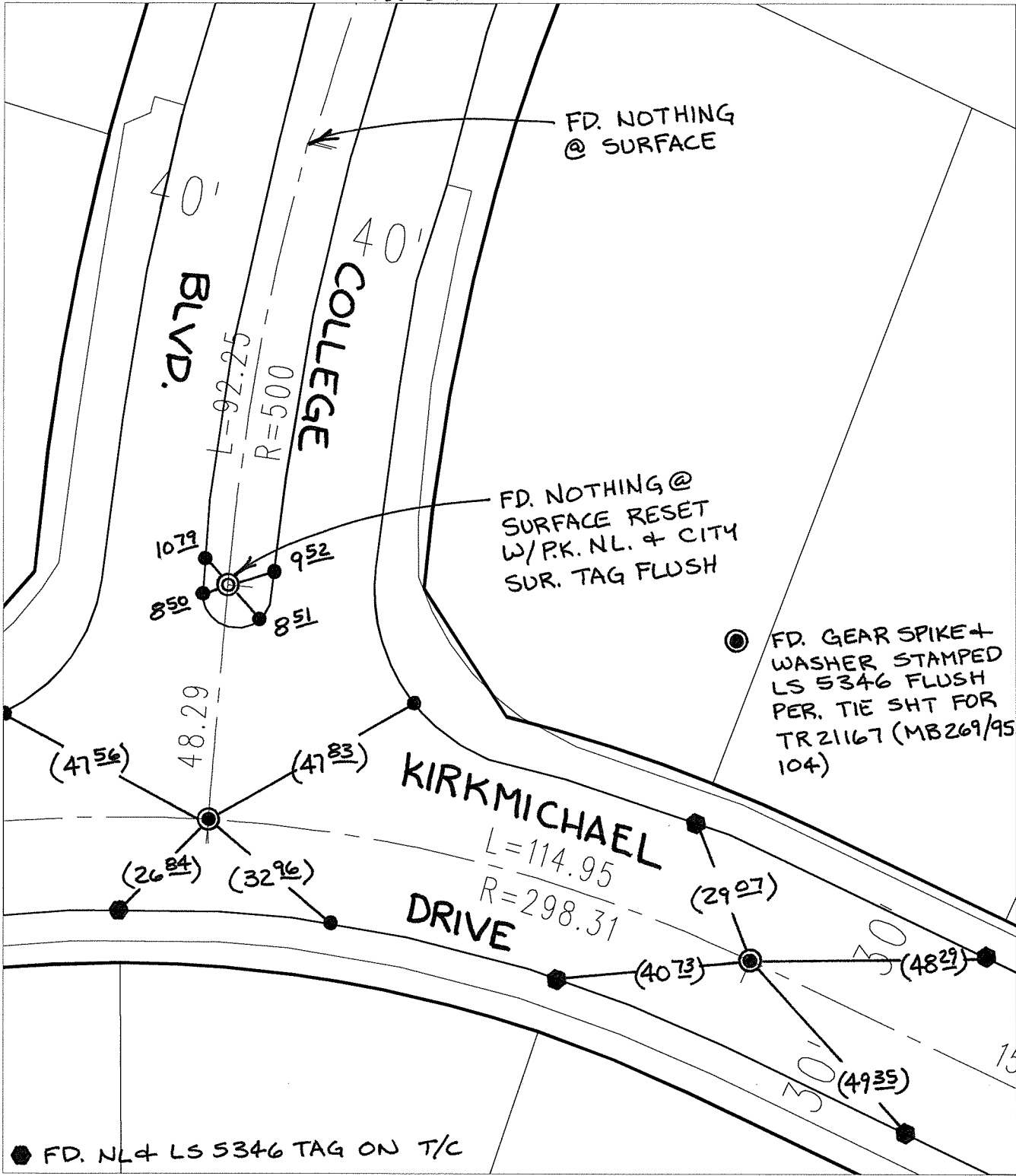
COLLEGE BLVD.

OFFICIAL USE ONLY

X-Street:

KIRKMICHAEL DRIVE

TRANSIT & SWING TIES



Scale: 1" = 30'

Date: 08/27/07

Drawn by: pw

F.B.:

TR-Sec: T2SR4W-33

**OFFICIAL TIE PLAT**  
CITY OF RIVERSIDE

*These ties are for the purpose of perpetuating the found monumentation. No claim is made as to the relationship of the points or lines shown hereon to true boundary locations.*



Sheet 1 of 1  
Cadme MB: 58-3