

C12238, 71F

Street:

FLOWWOOD COURT

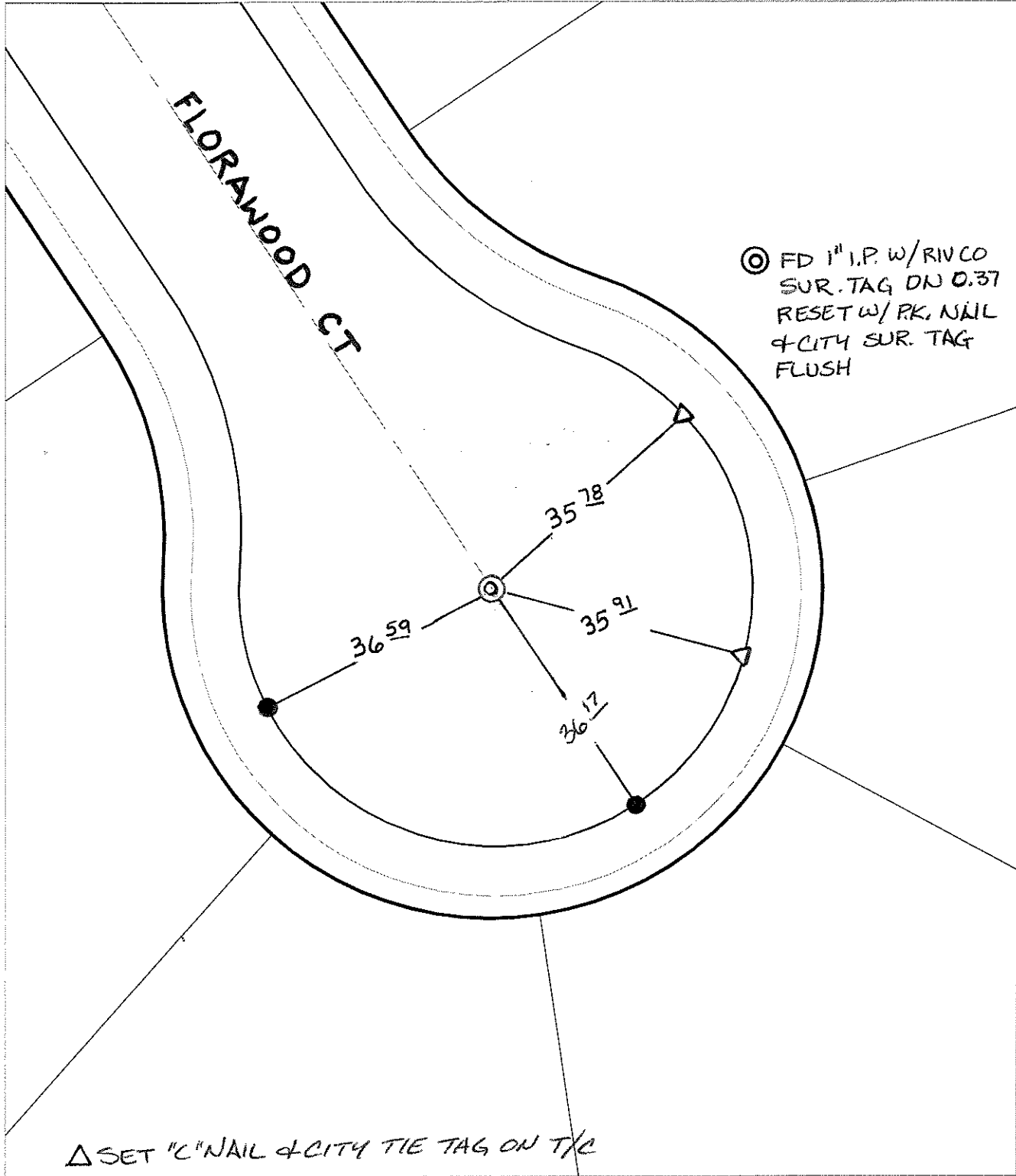
X-Street:
OFFICIAL USE ONLY

CUL-DE-SAC

SWING TIES

FLOWWOOD CT

⊙ FD 1" I.P. W/RIV CO
SUR. TAG DN 0.37
RESET W/ P.K. NAIL
& CITY SUR. TAG
FLUSH



Δ SET "C" NAIL & CITY TIE TAG ON T/C

- ✕ FD. Ramset Nail on T/C ● FD. LD. & TK. on T/C
- FD. "C" Nail on T/C ○ Set LD. & TK. on T/C

P.K. and City Engineer tag to be set @ surface after street construction is complete. (If possible)

Scale: 1" = 20'
 Date: 10/10/06
 Drawn by: pw
 F.B.:
 TR-Sec: T3SR6W-23

OFFICIAL TIE PLAT

CITY OF RIVERSIDE

These ties are for the purpose of perpetuating the found monumentation. No claim is made as to the relationship of the points or lines shown hereon to true boundary locations.



Sheet 1 of 1
Cadme MB: 79-5