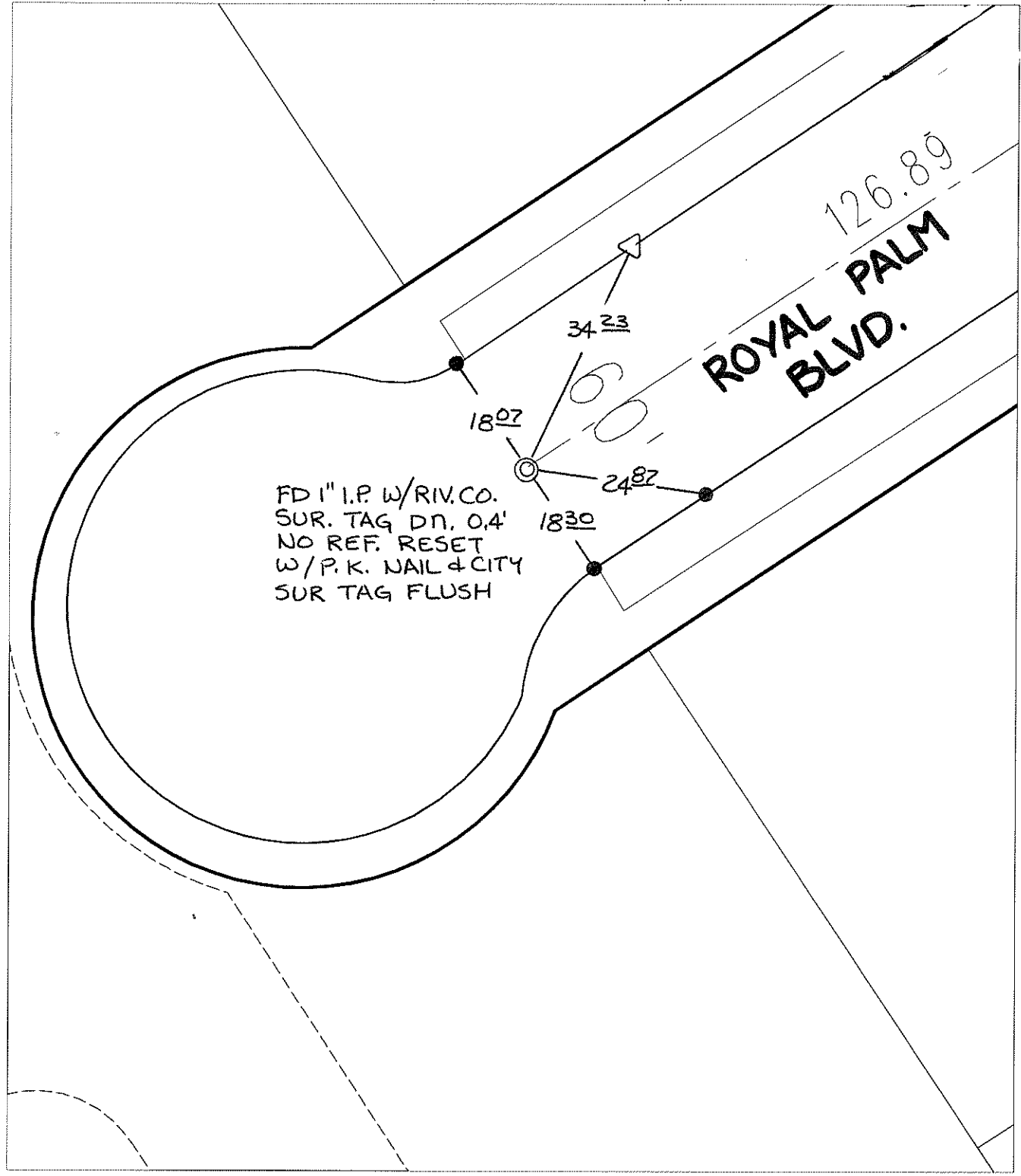


TRANSIT & SWING TIES

ROYAL PALM BLVD.
126.89



FD 1" I.P. W/RIV.CO.
 SUR. TAG DN. 0.4'
 NO REF. RESET
 W/P.K. NAIL & CITY
 SUR TAG FLUSH

Street:

ROYAL PALM BLVD

OFFICIAL USE ONLY

X-Street:

CUL-DEL-SAC


- ✕ FD. Ramset Nail on T/C ● FD. LD. & TK. on T/C
- FD. "C" Nail on T/C ○ Set LD. & TK. on T/C

P.K. and City Engineer tag to be set @
 surface after street construction is
 complete. (If possible)

Scale: 1" = 20'
 Date: 05/02/08
 Drawn by: pw
 F.B.:
 TR-Sec: T3SR6W-23

OFFICIAL TIE PLAT
CITY OF RIVERSIDE

*These ties are for the purpose of perpetuating the found
 monumentation. No claim is made as to the relationship of
 the points or lines shown hereon to true boundary locations.*



Sheet 1 of 1
 Cadme MB: 79-5