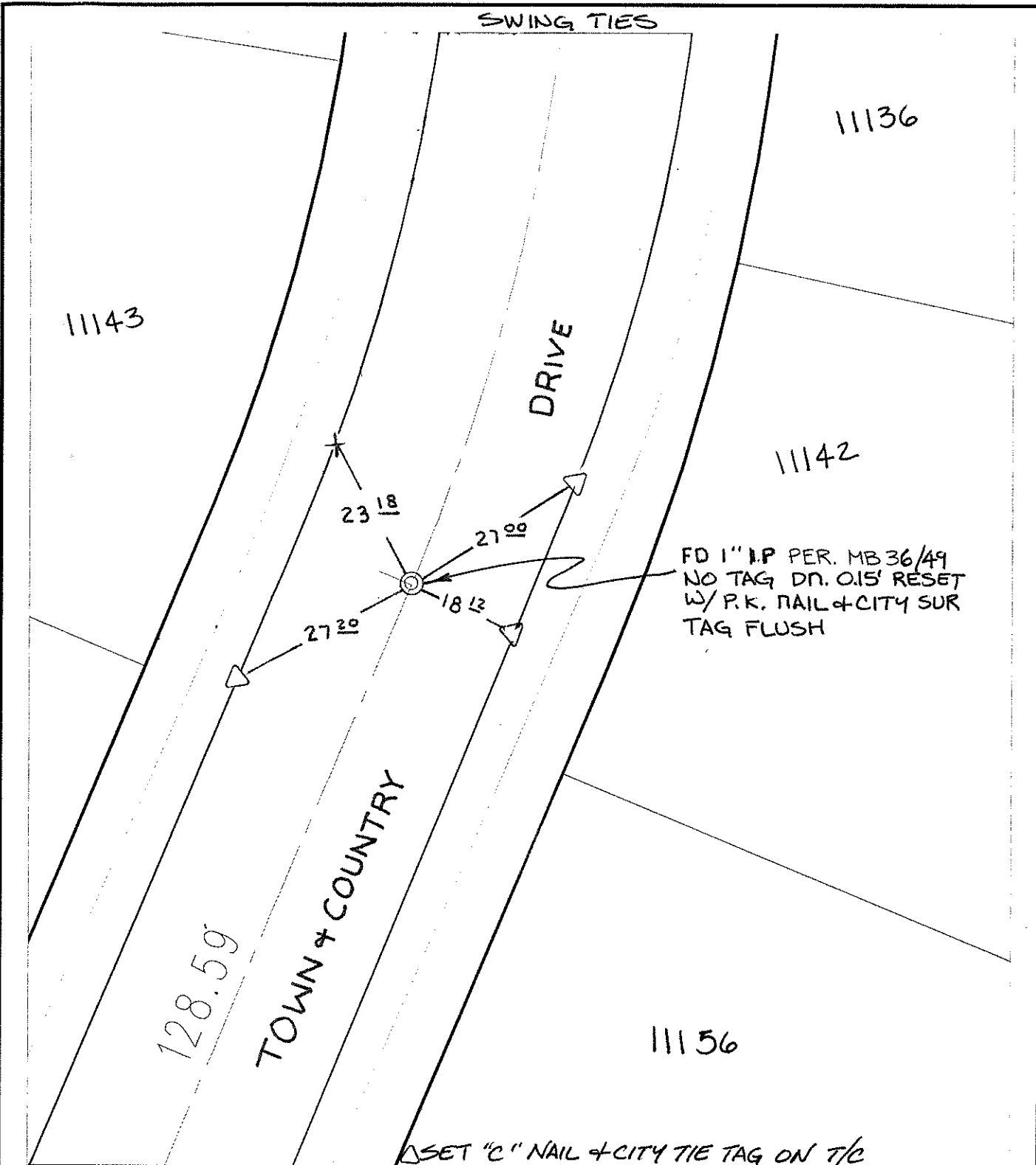


Street: TOWN & COUNTRY DRIVE X-Street: E.C.S. MONTLAKE INT.  
 OFFICIAL USE ONLY



FD 1" I.P. PER. MB 36/49  
 NO TAG DN. 0.15' RESET  
 W/ P.K. NAIL + CITY SUR  
 TAG FLUSH


△ SET "C" NAIL + CITY TIE TAG ON T/C

- 

Scale: 1" = 20'  
 Date: 09/14/06  
 Drawn by: survey  
 F.B.:  
 TR-Sec: T3SR6W-23

**OFFICIAL TIE PLAT**  
 CITY OF RIVERSIDE

*These ties are for the purpose of perpetuating the found monumentation. No claim is made as to the relationship of the points or lines shown hereon to true boundary locations.*



Sheet 1 of 1  
 Cadme MB: 79-6