

Street:

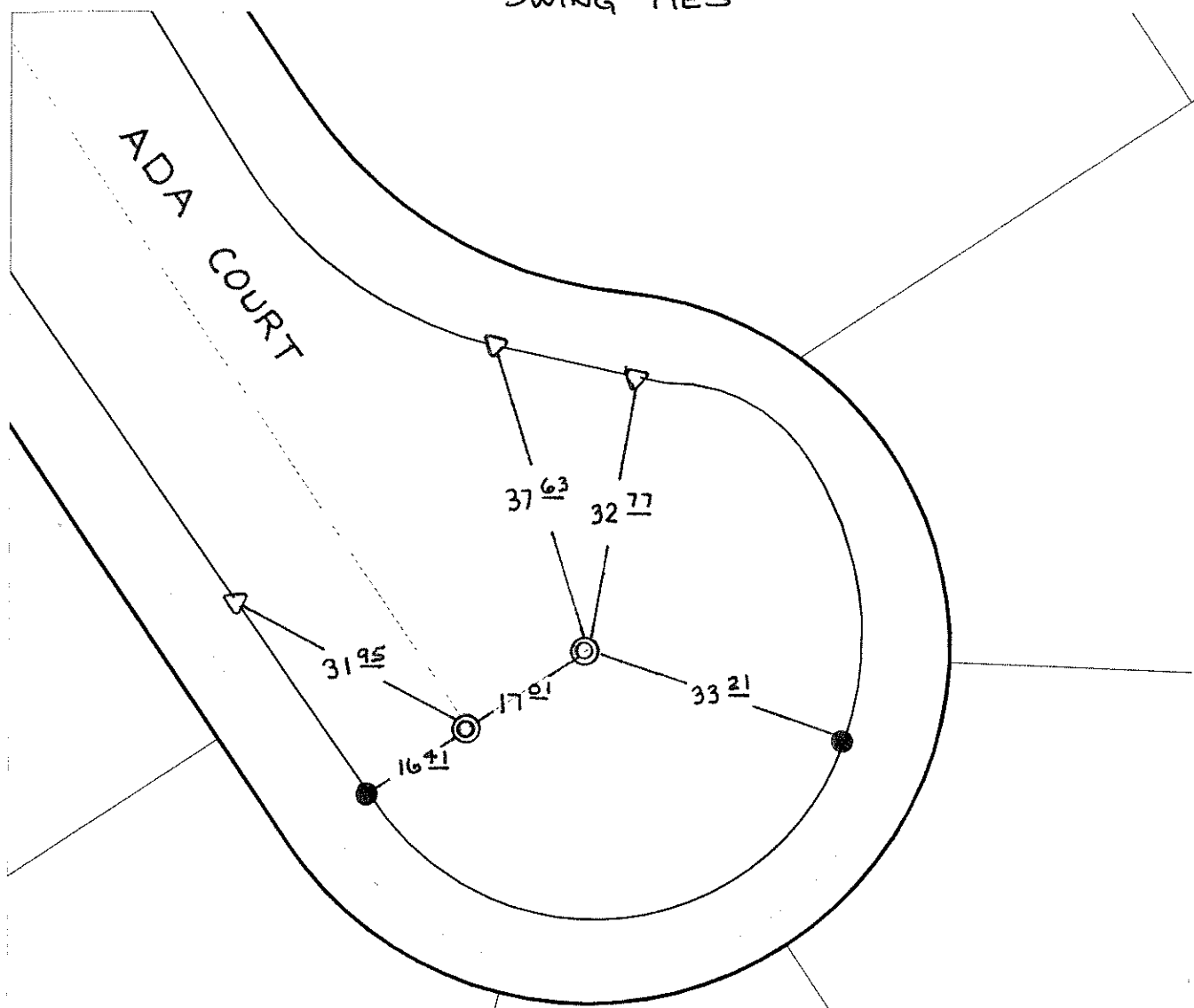
ADA COURT

X-Street:  
OFFICIAL USE ONLY

MONTLAKE DRIVE.

SWING TIES

ADA COURT



⊙ FD 1" IP W/TAG  
 7986 FLUSH RESET  
 W/PK. NAIL + CITY  
 SUR TAG FLUSH


△ SET "C" NAIL + CITY TIE TAG ON T/C

- ✕ FD. Ramset Nail on T/C      ● FD. LD. & TK. on T/C
  - FD. "C" Nail on T/C      ○ Set LD. & TK. on T/C
- P.K. and City Engineer tag to be set @ surface after street construction is complete. (If possible)*

Scale: 1" = 20'  
 Date: 01/05/07  
 Drawn by: DBueno  
 F.B.:  
 TR-Sec: T3SR6W-23

**OFFICIAL TIE PLAT**  
**CITY OF RIVERSIDE**

*These ties are for the purpose of perpetuating the found monumentation. No claim is made as to the relationship of the points or lines shown hereon to true boundary locations.*



Sheet 1 of 1  
 Cadme MB: 79-6