

C12247.77E

Street:

SKYLARK DRIVE

OFFICIAL USE ONLY

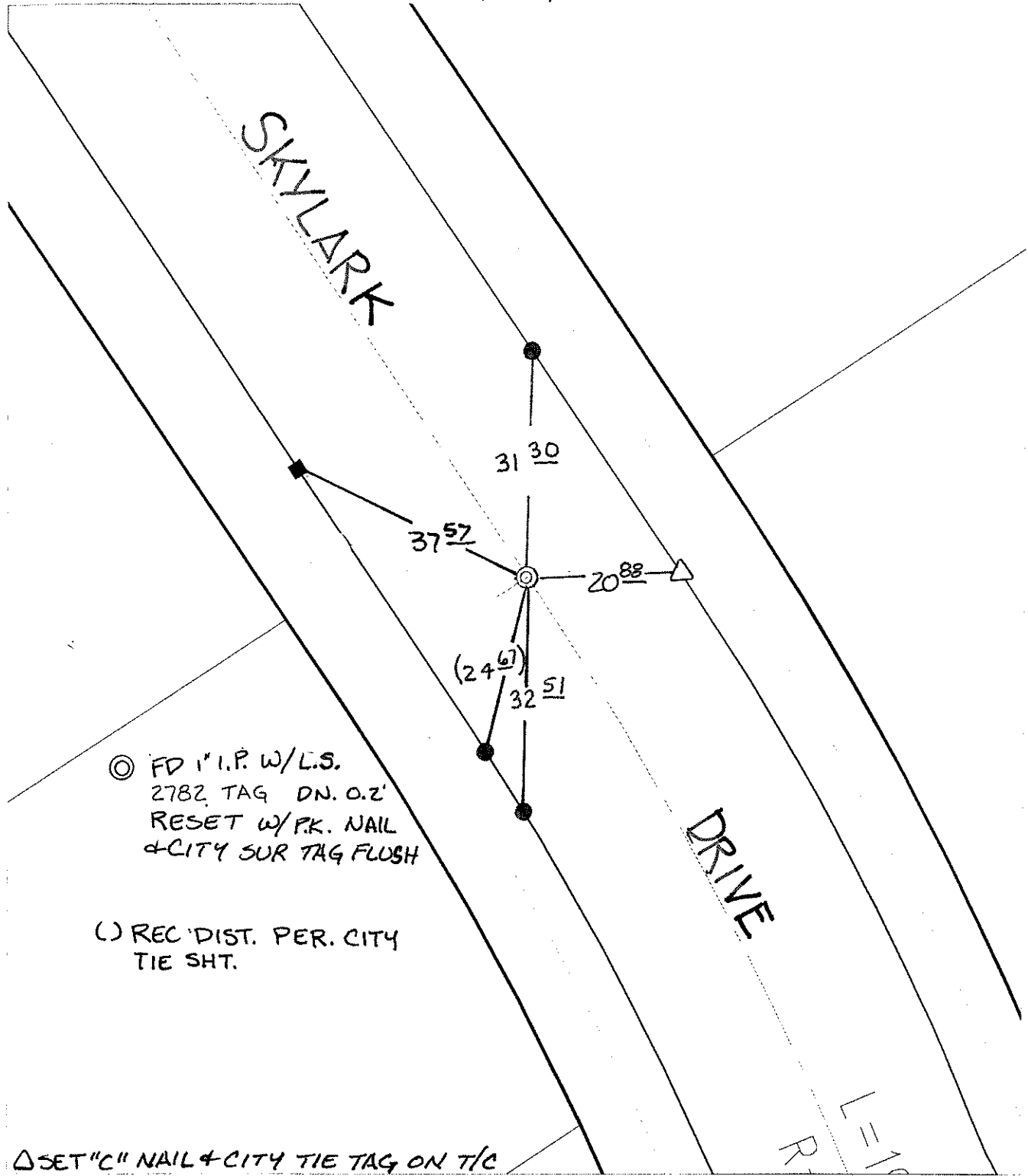
X-Street:

BC SE OF MAGNOLIA

SWING TIES

SKYLARK

DRIVE



⊙ FD 1" I.P. W/L.S.
 2782 TAG DN. 0.2'
 RESET W/PK. NAIL
 +CITY SUR TAG FLUSH

⊙ REC'DIST. PER. CITY
 TIE SHT.

△ SET "C" NAIL + CITY TIE TAG ON T/C

- ✕ FD. Ramset Nail on T/C ● FD. LD. & TK. on T/C
- FD. "C" Nail on T/C ○ Set LD. & TK. on T/C

P.K. and City Engineer tag to be set @
 surface after street construction is
 complete. (If possible)

Scale: 1" = 20'
 Date: 10/10/06
 Drawn by: LHarris
 F.B.:
 TR-Sec: T3SR6W-23

OFFICIAL TIE PLAT

CITY OF RIVERSIDE



*These ties are for the purpose of perpetuating the found
 monumentation. No claim is made as to the relationship of
 the points or lines shown hereon to true boundary locations.*

Sheet 1 of 1
 Cadme MB: 79-5