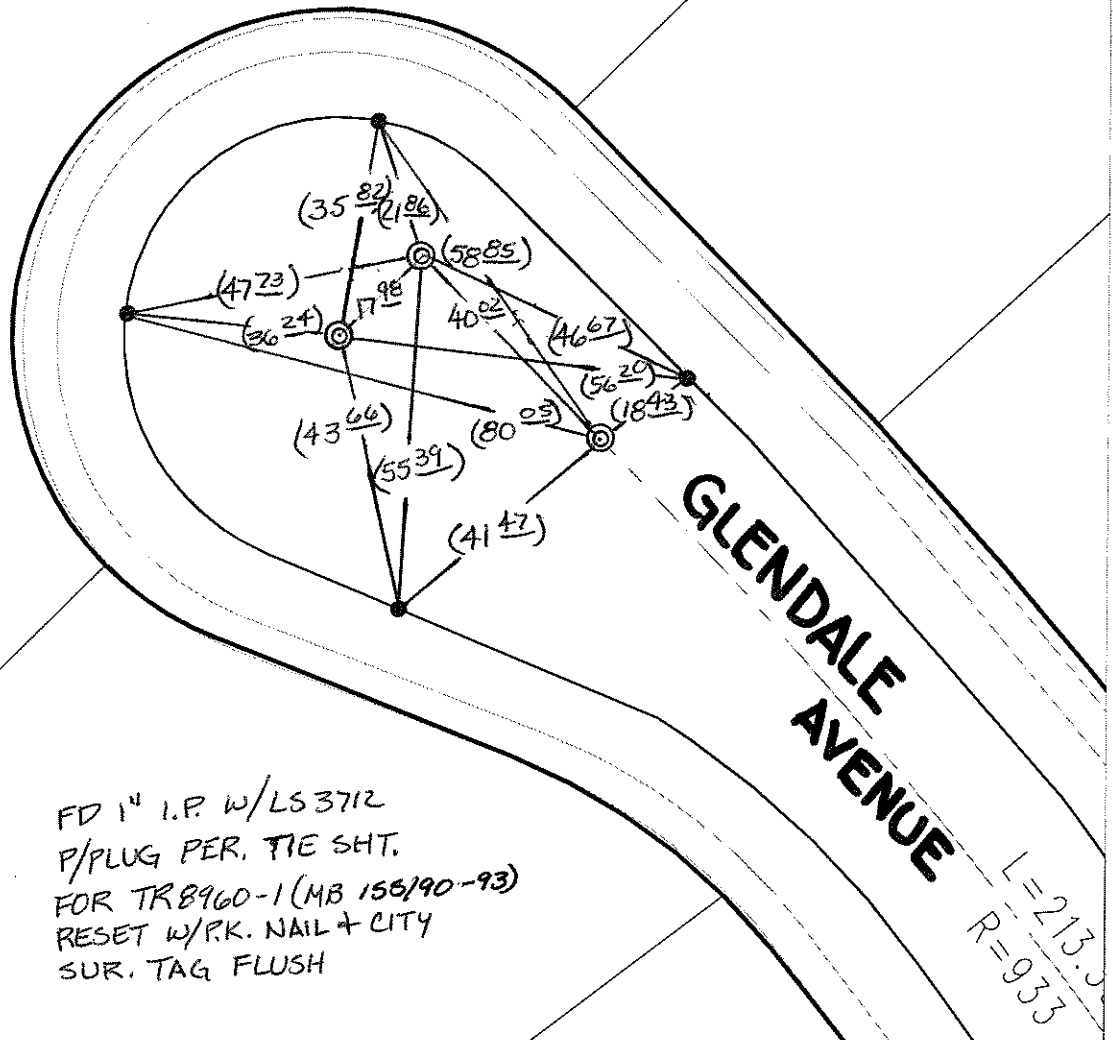


C12258. TIF

Street: GLENDALE AVENUE  
X-Street: CUL-DE-SAC  
OFFICIAL USE ONLY

### SWING TIES

( ) - REC. DIST. PER.  
TIE SH. FOR TR8960-1  
(MB 155/90-93)



FD 1" I.P. W/LS3712  
P/PLUG PER. TIE SH.  
FOR TR8960-1 (MB 155/90-93)  
RESET W/P.K. NAIL + CITY  
SUR. TAG FLUSH

- ✕ FD. Ramset Nail on T/C    ● FD. LD. & TK. on T/C    P.K. and City Engineer tag to be set @ surface after street construction is complete. (If possible)
- FD. "C" Nail on T/C    ○ Set LD. & TK. on T/C

Scale: 1" = 30'  
 Date: 10/12/06  
 Drawn by: L.Harris  
 F.B.:  
 TR-Sec: T2SR6W-36

## OFFICIAL TIE PLAT

### CITY OF RIVERSIDE

*These ties are for the purpose of perpetuating the found monumentation. No claim is made as to the relationship of the points or lines shown hereon to true boundary locations.*



Sheet 1 of 1  
 Cadme MB: 50-1