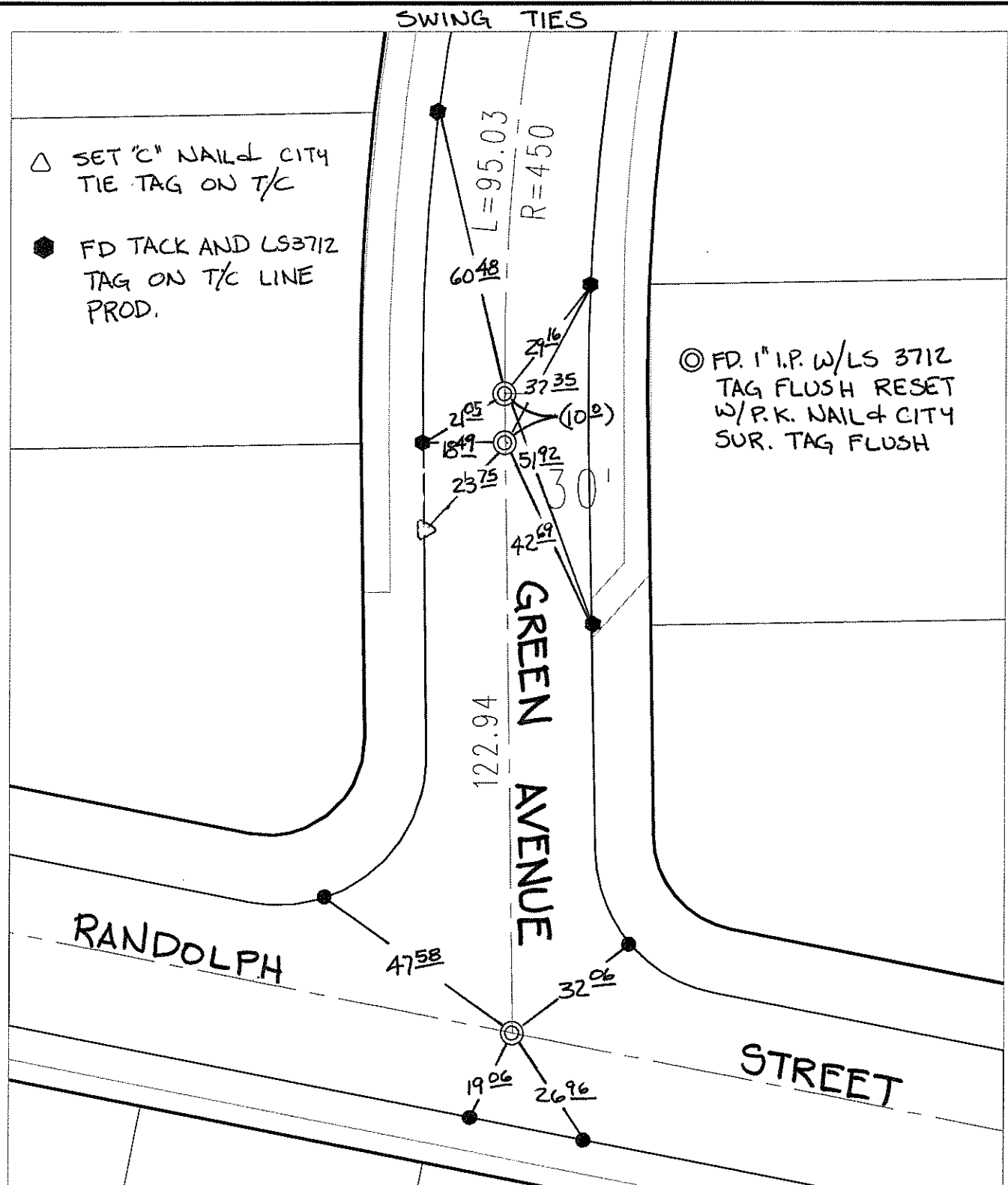


Street:

GREEN AVENUE

X-Street: OFFICIAL USE ONLY

RANDOLPH STREET



△ SET "C" NAIL & CITY TIE TAG ON T/C

● FD TACK AND LS3712 TAG ON T/C LINE PROD.

⊙ FD. 1" I.P. W/LS 3712 TAG FLUSH RESET W/P.K. NAIL & CITY SUR. TAG FLUSH

- × FD. Ramset Nail on T/C
- FD. LD. & TK. on T/C
- FD. "C" Nail on T/C
- Set LD. & TK. on T/C

P.K. and City Engineer tag to be set @ surface after street construction is complete. (if possible)

Scale: 1" = 30'

Date: 09/23/08

Drawn by: pw

F.B.:

TR-Sec: T2SR6W-36

## OFFICIAL TIE PLAT

### CITY OF RIVERSIDE

*These ties are for the purpose of perpetuating the found monumentation. No claim is made as to the relationship of the points or lines shown hereon to true boundary locations.*



Sheet 1 of 1

Cadme MB: 50-1