

C12260.TIF

Street: GREEN AVENUE
X-Street: BC & EC N OF RANDOLPH
OFFICIAL USE ONLY

SWING TIES

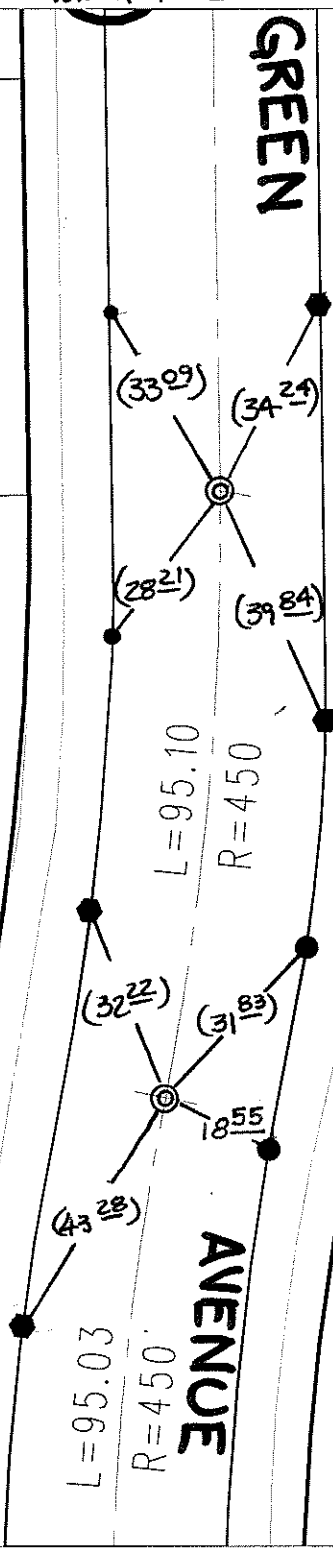
⊙ FD. 1" I.P. W/LS 3712
TAG FLUSH PER. TR
5104-4 MB 84/59-60
RESET W/P.K. NAIL +
CITY SUR. TAG FLUSH

FD RAMSET + LS 3712
TAG ON T/C

FD. RAMSET + LS 3712 TAG
ON T/C

FD LEAD ON PROP. PROD
@ T/C

FD LEAD ON PROP. PROD
@ T/C



- ⊗ FD. Ramset Nail on T/C
- FD. LD. & TK. on T/C
- FD. "C" Nail on T/C
- Set LD. & TK. on T/C

P.K. and City Engineer tag to be set @
surface after street construction is
complete. (If possible)

Scale: 1" = 30'
 Date: 10/17/06
 Drawn by: L. Harris
 F.B.:
 TR-Sec: T2SR6W-36

OFFICIAL TIE PLAT

CITY OF RIVERSIDE

*These ties are for the purpose of perpetuating the found
 monumentation. No claim is made as to the relationship of
 the points or lines shown hereon to true boundary locations.*



Sheet 1 of 1
 Cadme MB: 50-1