

Street:

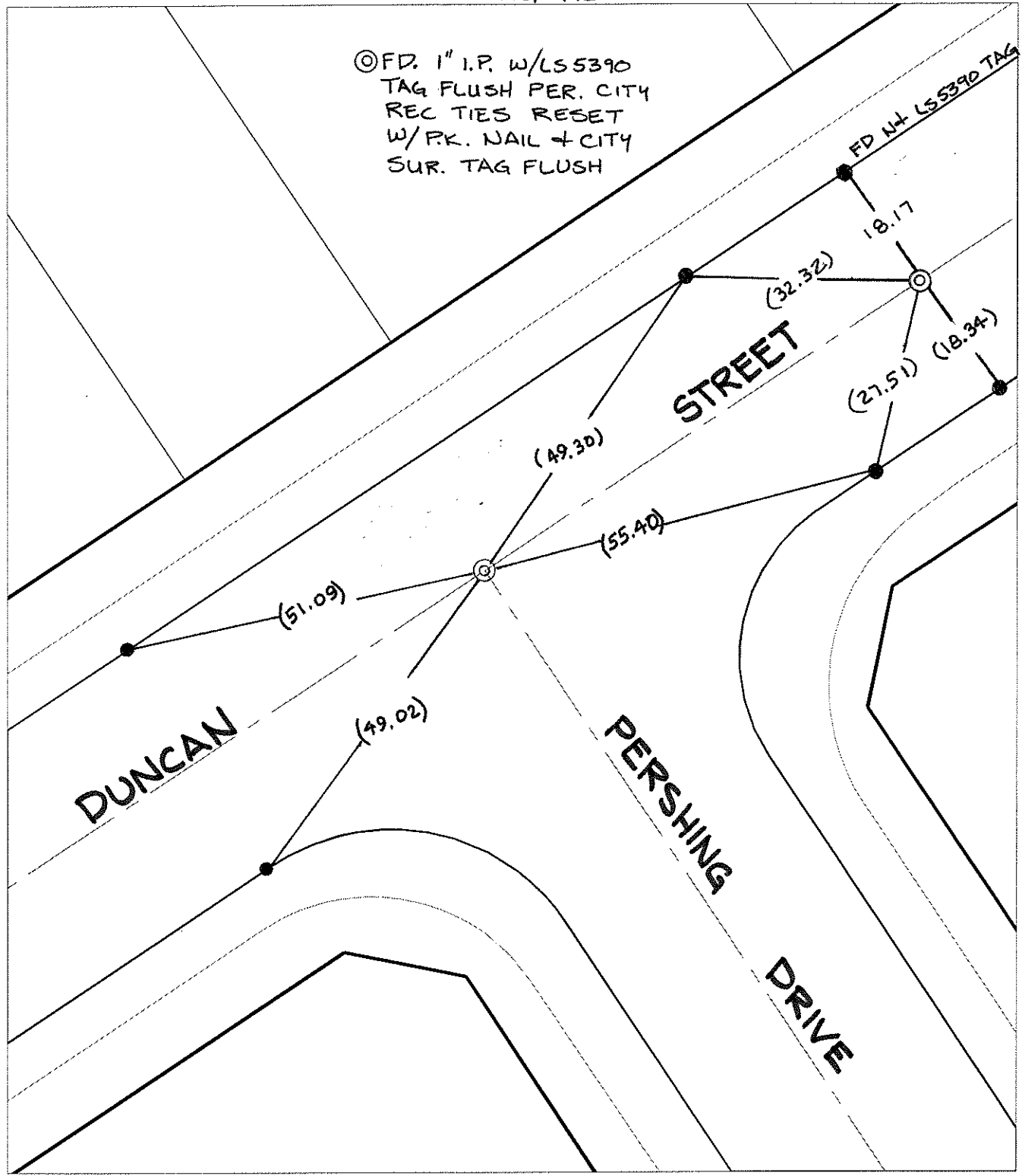
DUNCAN AVENUE

X-Street:  
OFFICIAL USE ONLY

PERSHING DRIVE

SWING TIES

©FD. 1" I.P. w/LS5390  
TAG FLUSH PER. CITY  
REC TIES RESET  
W/PK. NAIL + CITY  
SUR. TAG FLUSH




- ✕ FD. Ramset Nail on T/C      ● FD. LD. & TK. on T/C      P.K. and City Engineer tag to be set @ surface after street construction is complete. (If possible)
- FD. "C" Nail on T/C      ○ Set LD. & TK. on T/C

Scale: 1" = 20'  
Date: 11/27/04  
Drawn by: survey  
F.B.:  
TR-Sec: T3SR5W-6

**OFFICIAL TIE PLAT**  
**CITY OF RIVERSIDE**

*These ties are for the purpose of perpetuating the found monumentation. No claim is made as to the relationship of the points or lines shown hereon to true boundary locations.*



Sheet 1 of 1  
Cadme MB: 65-2