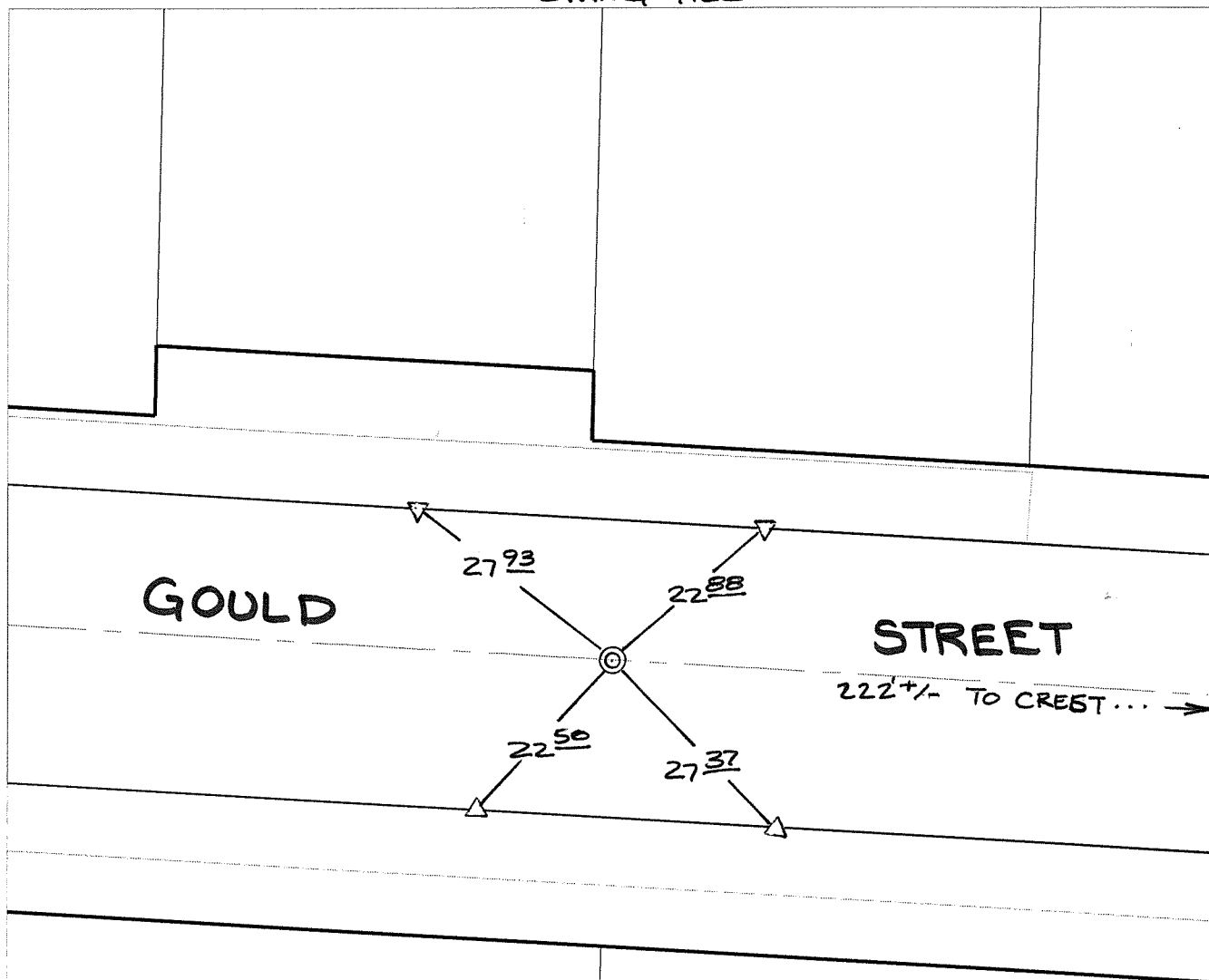


Street:

GOULD STREET

X-StreetR BNDY 222+/- W OF CREST  
OFFICIAL USE ONLY

SWING TIES



⊙ FD. GEAR SPK +  
TAG ILLEGIBLE  
NO REF. FLUSH  
RESET w/ PK NL.  
& CITY SUR TAG  
FLUSH

TR. BNDY.

△ SET "C" NAIL & CITY TIE TAG ON T/C

- × FD. Ramset Nail on T/C    ● FD. LD. & TK. on T/C
- FD. "C" Nail on T/C      ○ Set LD. & TK. on T/C

P.K. and City Engineer tag to be set @ surface after street construction is complete. (If possible)

Scale: 1" = 20'  
 Date: 08/09/05  
 Drawn by: SURVEY  
 F.B.:  
 TR-Sec: T3SR6W-2

## OFFICIAL TIE PLAT

### CITY OF RIVERSIDE

*These ties are for the purpose of perpetuating the found monumentation. No claim is made as to the relationship of the points or lines shown hereon to true boundary locations.*



Sheet 1 of 1  
 Cadme MB: 49-6