

Street:

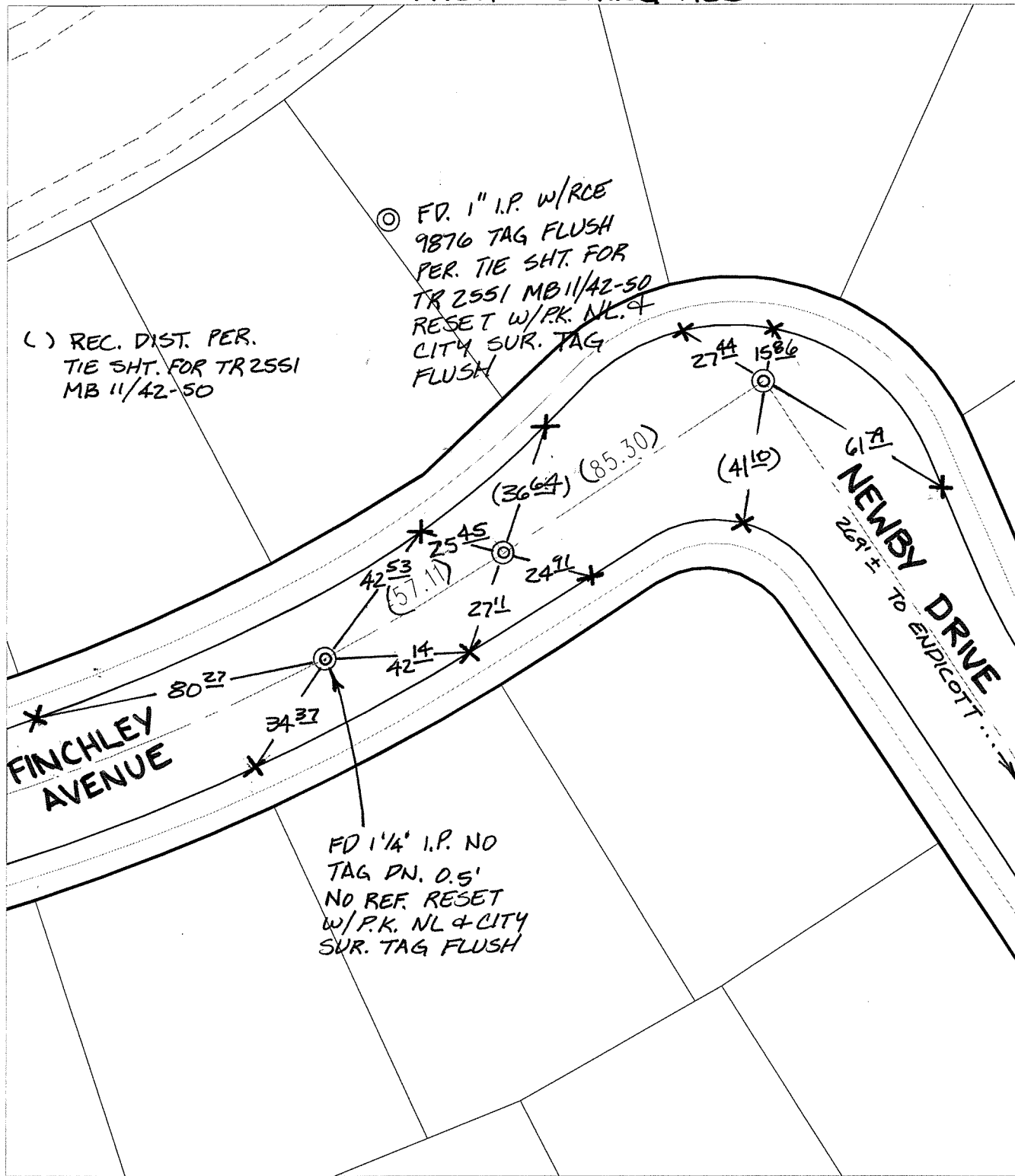
FINCHLEY AVENUE

OFFICIAL USE ONLY

X-Street:

NEWBY DRIVE

TRANSIT + SWING TIES



() REC. DIST. PER. TIE SHT. FOR TR 2551 MB 11/42-50

FD. 1" I.P. W/RCE 9876 TAG FLUSH PER. TIE SHT. FOR TR 2551 MB 11/42-50 RESET W/P.K. NL. & CITY SUR. TAG FLUSH

FD 1 1/4" I.P. NO TAG DN. 0.5' NO REF. RESET W/P.K. NL & CITY SUR. TAG FLUSH

- ✕ FD. Ramset Nail on T/C
- FD. "C" Nail on T/C

- FD. LD. & TK. on T/C
- Set LD. & TK. on T/C

P.K. and City Engineer tag to be set @ surface after street construction is complete. (If possible)

Scale: 1" = 40'
 Date: 08/04/05
 Drawn by: SURVEY
 F.B.:
 TR-Sec: T3SR6W-14

OFFICIAL TIE PLAT
 CITY OF RIVERSIDE

These ties are for the purpose of perpetuating the found monumentation. No claim is made as to the relationship of the points or lines shown hereon to true boundary locations.

Sheet 1 of 1
 Cadme MB: 64-7