

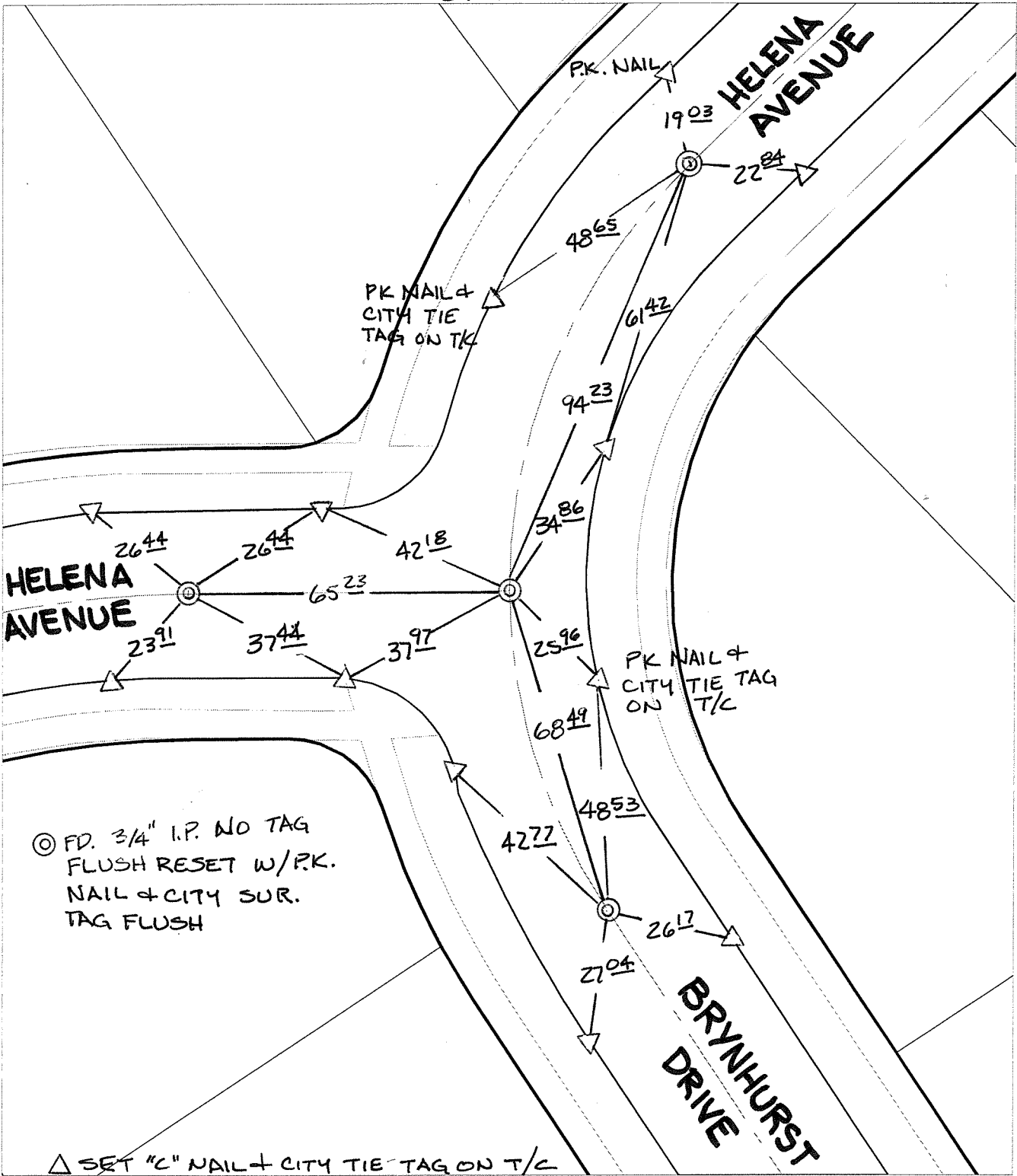
Street:

BRYNHURST DRIVE

X-Street:
OFFICIAL USE ONLY

HELENA AVENUE

SWING TIES



⊙ FD. 3/4" I.P. NO TAG
FLUSH RESET W/P.K.
NAIL & CITY SUR.
TAG FLUSH

△ SET "C" NAIL & CITY TIE TAG ON T/C


- ✕ FD. Ramset Nail on T/C
- FD. LD. & TK. on T/C
- FD. "C" Nail on T/C
- Set LD. & TK. on T/C

P.K. and City Engineer tag to be set @
surface after street construction is
complete. (If possible)

Scale: 1" = 30'
Date: 08/09/05
Drawn by: SURVEY
F.B.:
TR-Sec: T3SR5W-5

OFFICIAL TIE PLAT
CITY OF RIVERSIDE

*These ties are for the purpose of perpetuating the found
monumentation. No claim is made as to the relationship of
the points or lines shown hereon to true boundary locations.*



Sheet 1 of 1
Cadme MB: 67-1