

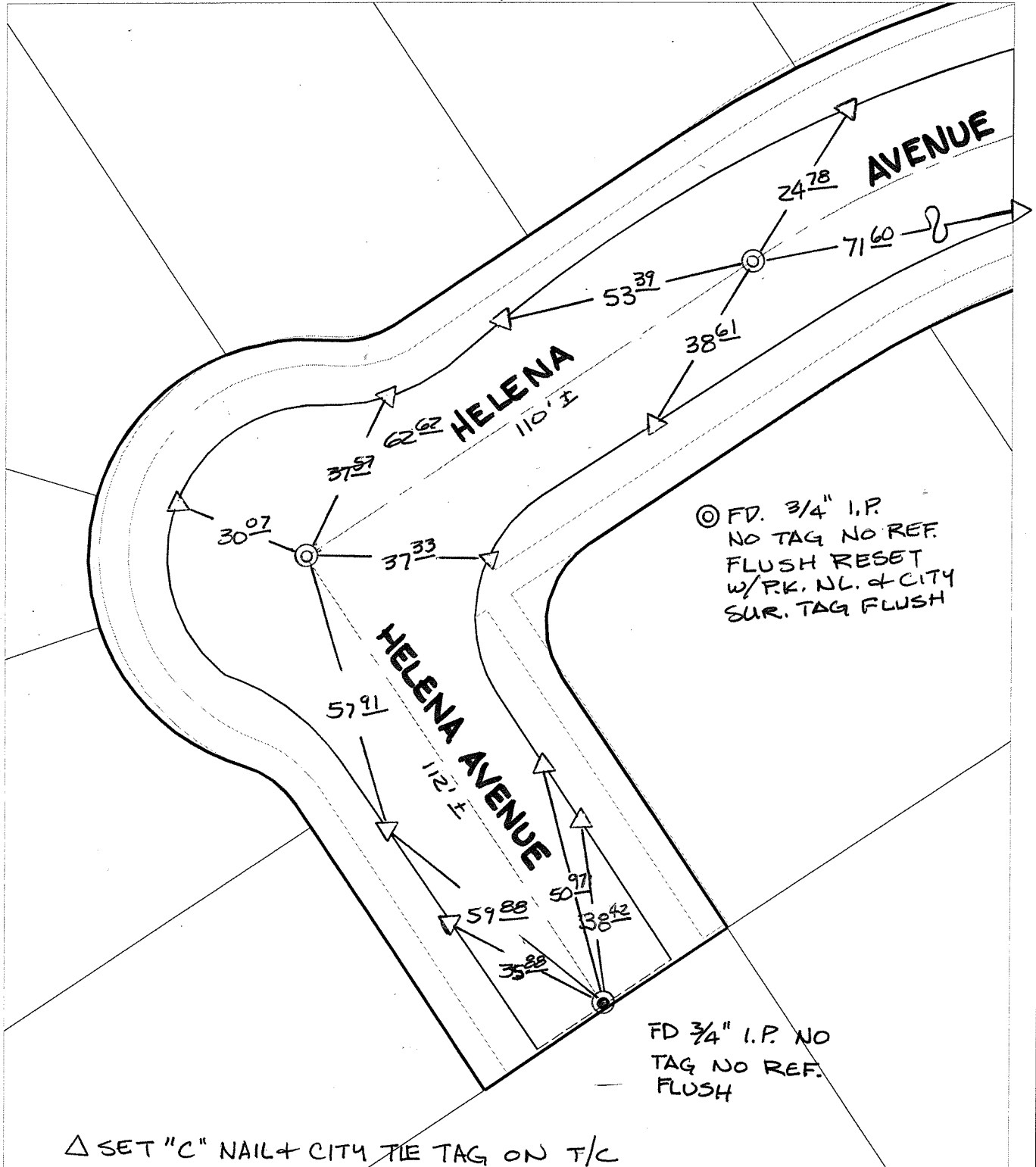
Street:

HELENA AVENUE

X-Street:
OFFICIAL USE ONLY

KNUCKLE & E.C.

SWING TIES



⊙ FD. 3/4" I.P.
NO TAG NO REF.
FLUSH RESET
w/P.K. NL. & CITY
SUR. TAG FLUSH

FD 3/4" I.P. NO
TAG NO REF.
FLUSH

△ SET "C" NAIL + CITY TIE TAG ON T/C

- × FD. Ramset Nail on T/C
- FD. LD. & TK. on T/C
- FD. "C" Nail on T/C
- Set LD. & TK. on T/C

P.K. and City Engineer tag to be set @
surface after street construction is
complete. (If possible)

Scale: 1" = 30'
Date: 08/09/05
Drawn by: SURVEY
F.B.:
TR-Sec: T3SR5W-5

OFFICIAL TIE PLAT

CITY OF RIVERSIDE

*These ties are for the purpose of perpetuating the found
monumentation. No claim is made as to the relationship of
the points or lines shown hereon to true boundary locations.*



Sheet 1 of 1
Cadme MB: 67-1