

Street:

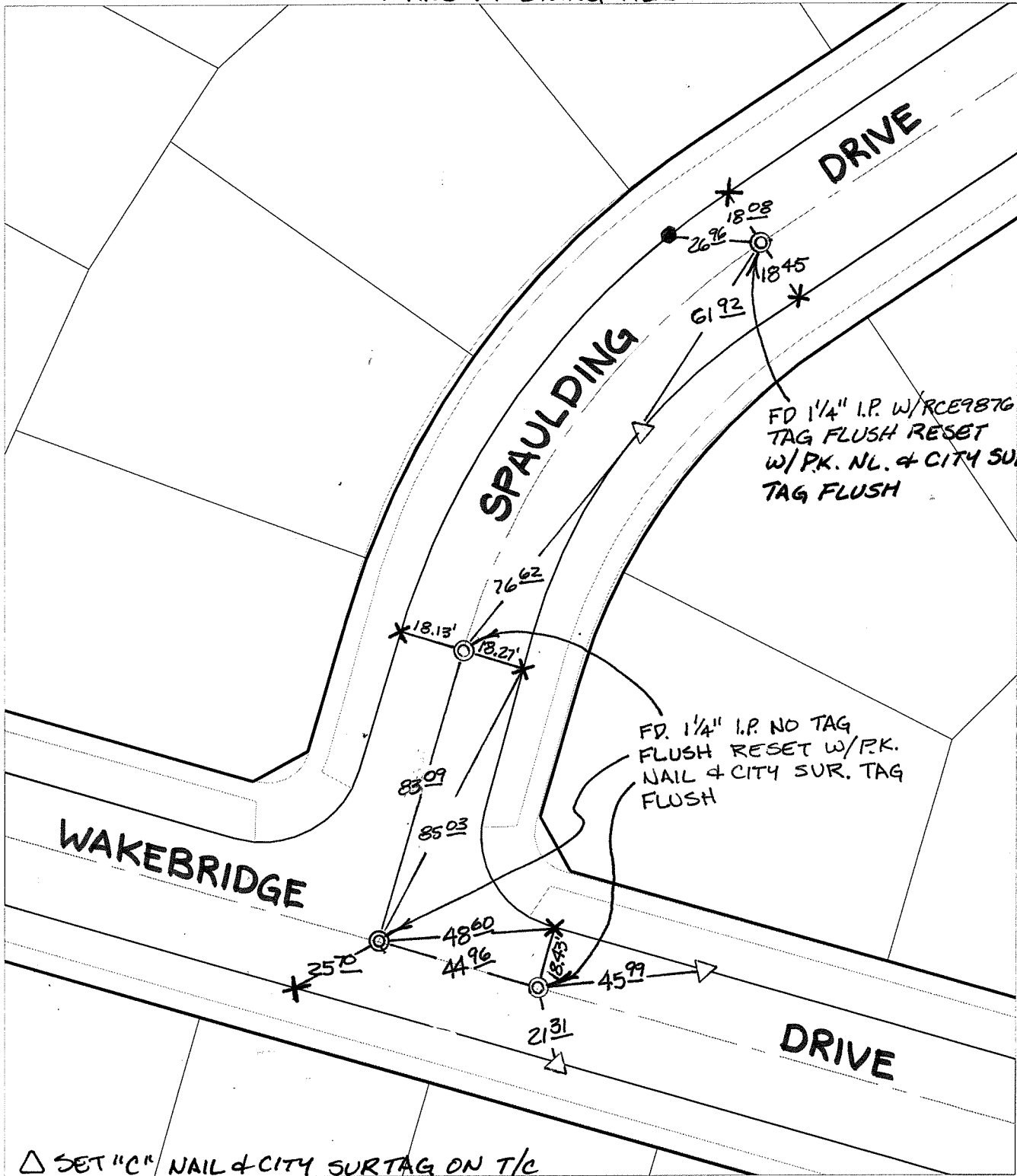
WAKEBRIDGE DRIVE

OFFICIAL USE ONLY

X-Street:

SPAULDING DRIVE

TRANSIT & SWING TIES



FD 1/4" I.P. W/RCE9876
TAG FLUSH RESET
W/PK. NL. & CITY SUR.
TAG FLUSH

FD 1/4" I.P. NO TAG
FLUSH RESET W/PK.
NAIL & CITY SUR. TAG
FLUSH

△ SET "C" NAIL & CITY SURTAG ON T/C

- × FD. Ramset Nail on T/C
- FD. LD. & TK. on T/C
- FD. "C" Nail on T/C
- Set LD. & TK. on T/C

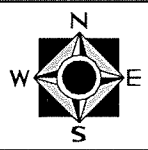
P.K. and City Engineer tag to be set @
surface after street construction is
complete. (If possible)

Scale: 1" = 40'
Date: 08/02/05
Drawn by: SURVEY
F.B.:
TR-Sec: T3SR6W-14

OFFICIAL TIE PLAT

CITY OF RIVERSIDE

*These ties are for the purpose of perpetuating the found
monumentation. No claim is made as to the relationship of
the points or lines shown hereon to true boundary locations.*



Sheet 1 of 1
Cadme MB: 79-1