

Street:

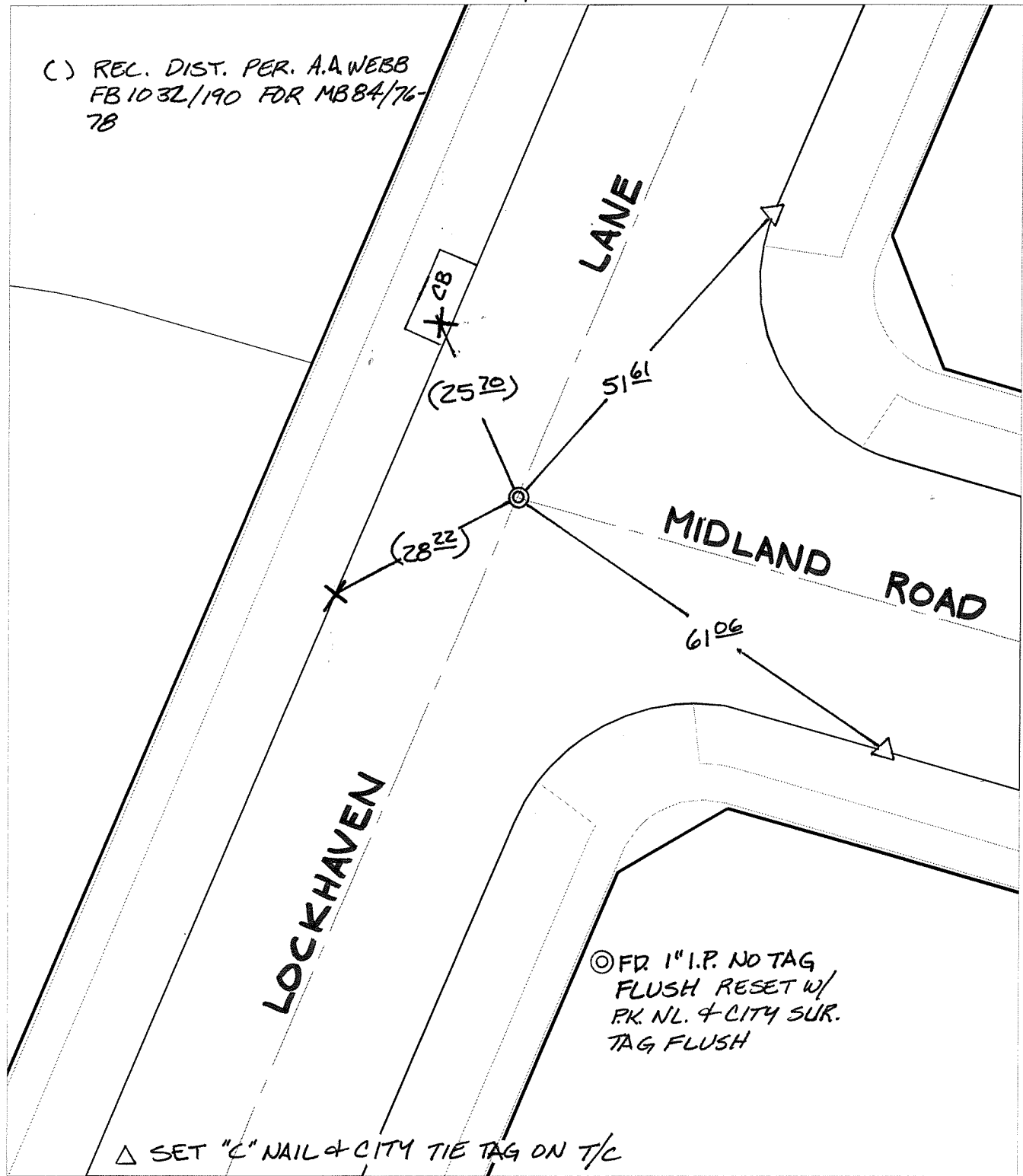
LOCKHAVEN LANE

X-Street:  
OFFICIAL USE ONLY

MIDLAND ROAD

SWING TIES

( ) REC. DIST. PER. A.A.WEBB  
FB 1032/190 FOR MB84/76-  
78



- ✕ FD. Ramset Nail on T/C
- FD. LD. & TK. on T/C
- FD. "C" Nail on T/C
- Set LD. & TK. on T/C

P.K. and City Engineer tag to be set @ surface after street construction is complete. (If possible)

Scale: 1" = 20'  
 Date: 08/02/05  
 Drawn by: SURVEY  
 F.B.:  
 TR-Sec: T3SR6W-14

**OFFICIAL TIE PLAT**  
**CITY OF RIVERSIDE**

*These ties are for the purpose of perpetuating the found monumentation. No claim is made as to the relationship of the points or lines shown hereon to true boundary locations.*

Sheet 1 of 1  
 Cadme MB: 79-1