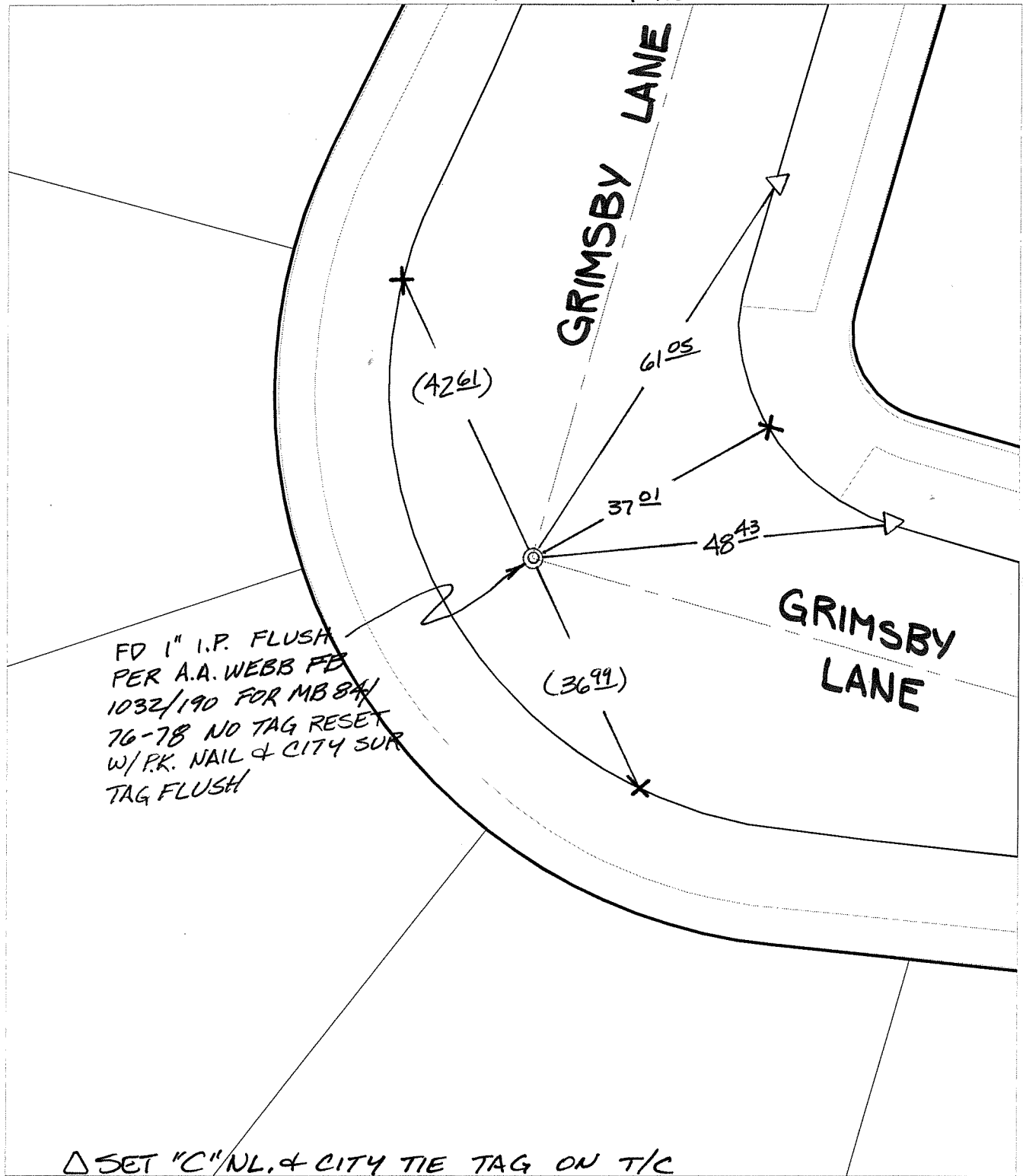


Street:

GRIMSBY LANE

X-Street/KNUCKLE W OF RELIANCE  
OFFICIAL USE ONLY

TRANSIT & SWING TIES



FD 1" I.P. FLUSH  
 PER A.A. WEBB FD  
 1032/190 FOR MB 84/  
 76-78 NO TAG RESET  
 W/P.K. NAIL & CITY SUR  
 TAG FLUSH

△ SET "C" NL. & CITY TIE TAG ON T/C

- × FD. Ramset Nail on T/C
  - FD. LD. & TK. on T/C
  - FD. "C" Nail on T/C
  - Set LD. & TK. on T/C
- P.K. and City Engineer tag to be set @ surface after street construction is complete. (If possible)

Scale: 1" = 20'  
 Date: 08/02/05  
 Drawn by: SURVEY  
 F.B.:  
 TR-Sec: T3SR6W-14

## OFFICIAL TIE PLAT

### CITY OF RIVERSIDE

*These ties are for the purpose of perpetuating the found monumentation. No claim is made as to the relationship of the points or lines shown hereon to true boundary locations.*



Sheet 1 of 1  
 Cadme MB: 79-3