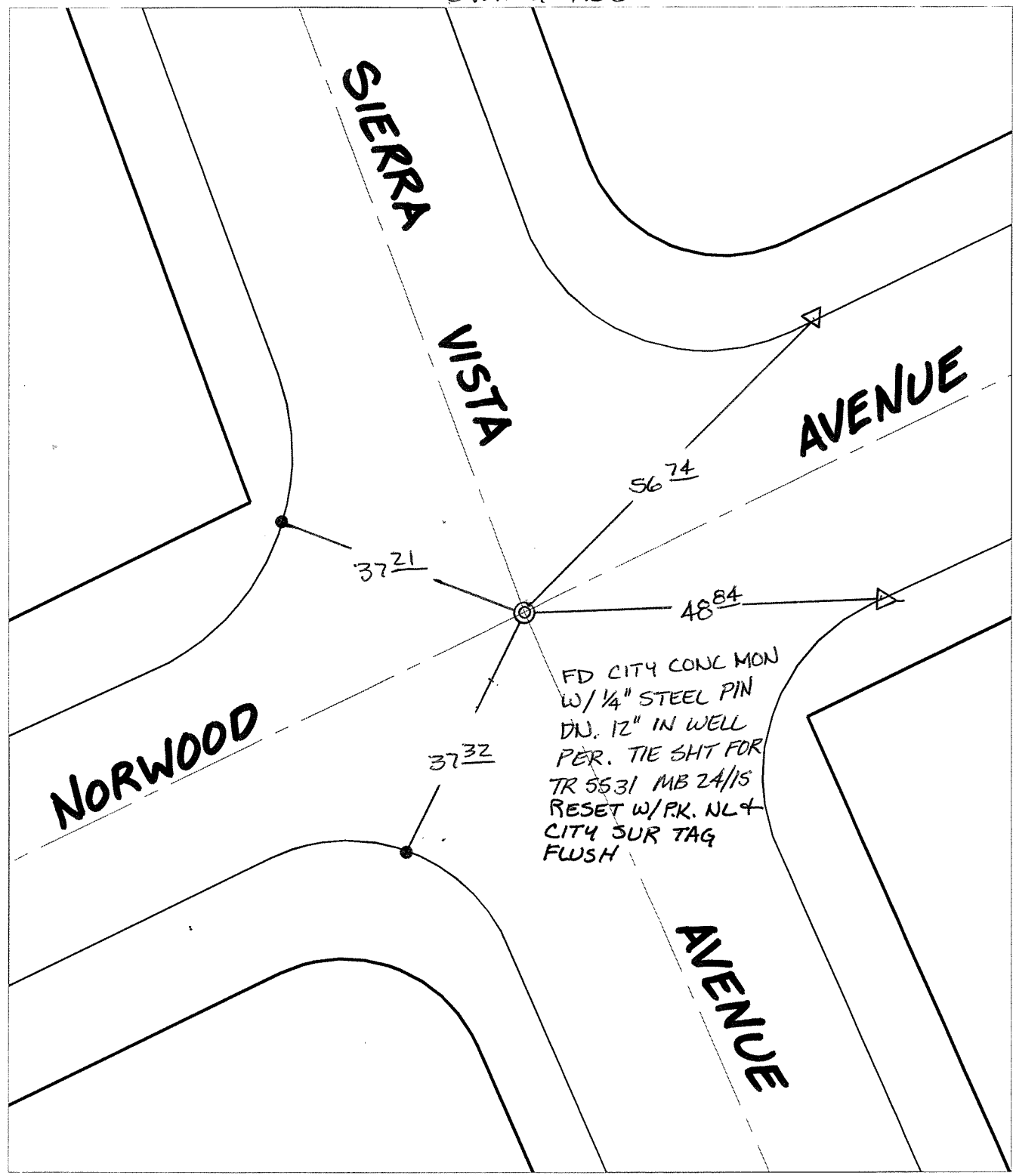


C 12319.71F

Street: NORWOOD AVENUE X-Street: SIERRA VISTA AVENUE  
OFFICIAL USE ONLY

SWING TIES



FD CITY CONC MON  
 W/ 1/4" STEEL PIN  
 DN. 12" IN WELL  
 PER. TIE SHT FOR  
 TR 5531 MB 24/15  
 RESET W/P.K. NL +  
 CITY SUR TAG  
 FLUSH


- ✕ FD. Ramset Nail on T/C      ● FD. LD. & TK. on T/C      P.K. and City Engineer tag to be set @ surface after street construction is complete. (If possible)
- FD. "C" Nail on T/C      ○ Set LD. & TK. on T/C

Scale: 1" = 20'  
 Date: 06/11/08  
 Drawn by: pw  
 F.B.:  
 TR-Sec: T3SR6W-10

## OFFICIAL TIE PLAT

### CITY OF RIVERSIDE

*These ties are for the purpose of perpetuating the found monumentation. No claim is made as to the relationship of the points or lines shown hereon to true boundary locations.*



Sheet 1 of 1  
 Cadme MB: 63-5