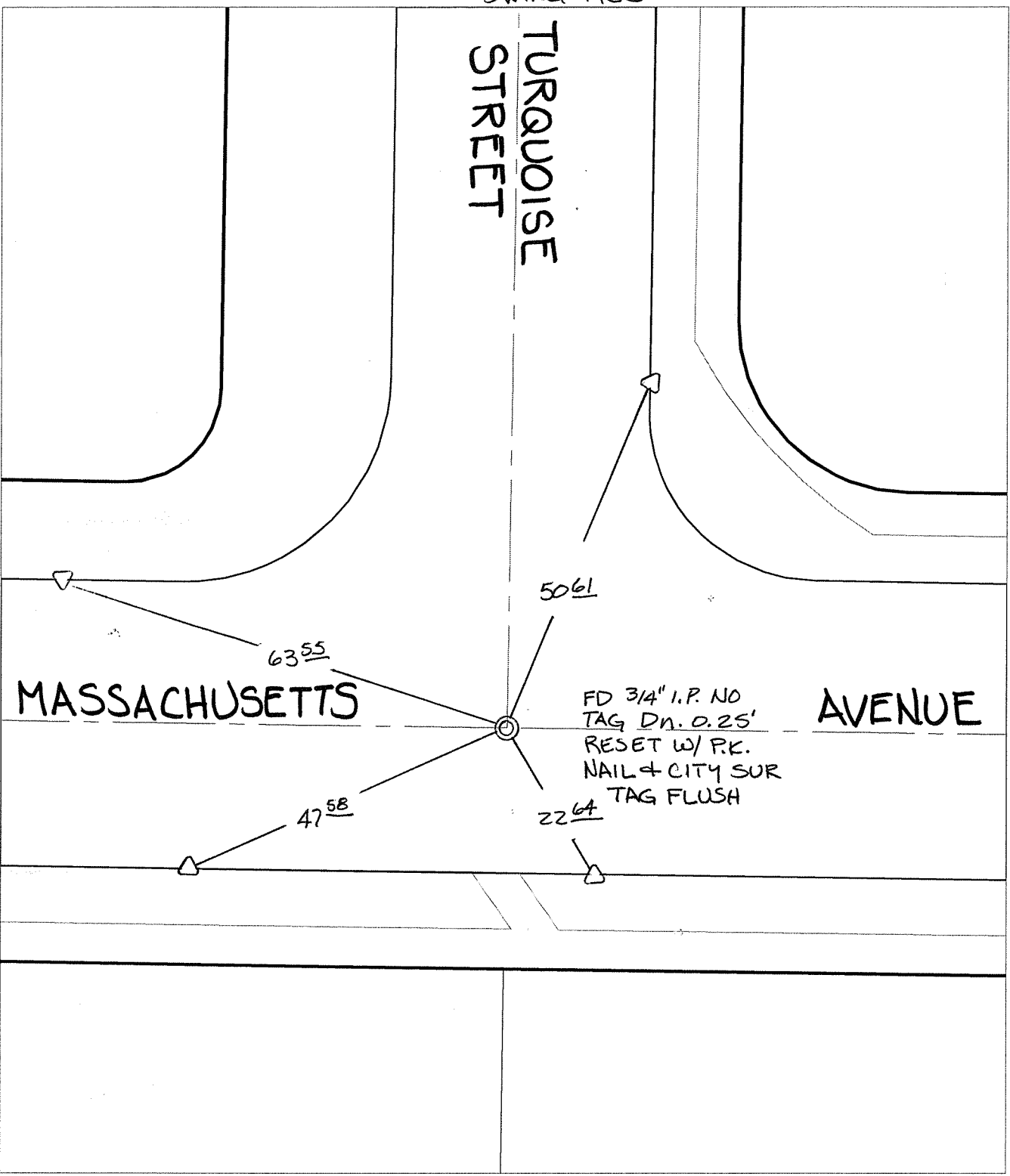


C12338.T1F

Street: MASSACHUSETTS AVENUE X-Street: TURQUOISE STREET  
OFFICIAL USE ONLY

SWING TIES


TURQUOISE STREET



✕ FD. Ramset Nail on T/C    ● FD. LD. & TK. on T/C    P.K. and City Engineer tag to be set @  
 ■ FD. "C" Nail on T/C    ○ Set LD. & TK. on T/C    surface after street construction is  
    complete. (If possible)

Scale: 1" = 20'  
 Date: 04/09/09  
 Drawn by: pw  
 F.B.:  
 TR-Sec: T2SR4W-19

**OFFICIAL TIE PLAT**  
**CITY OF RIVERSIDE**  
*These ties are for the purpose of perpetuating the found  
 monumentation. No claim is made as to the relationship of  
 the points or lines shown hereon to true boundary locations.*



Sheet 1 of 1  
 Cadme MB: 26-5