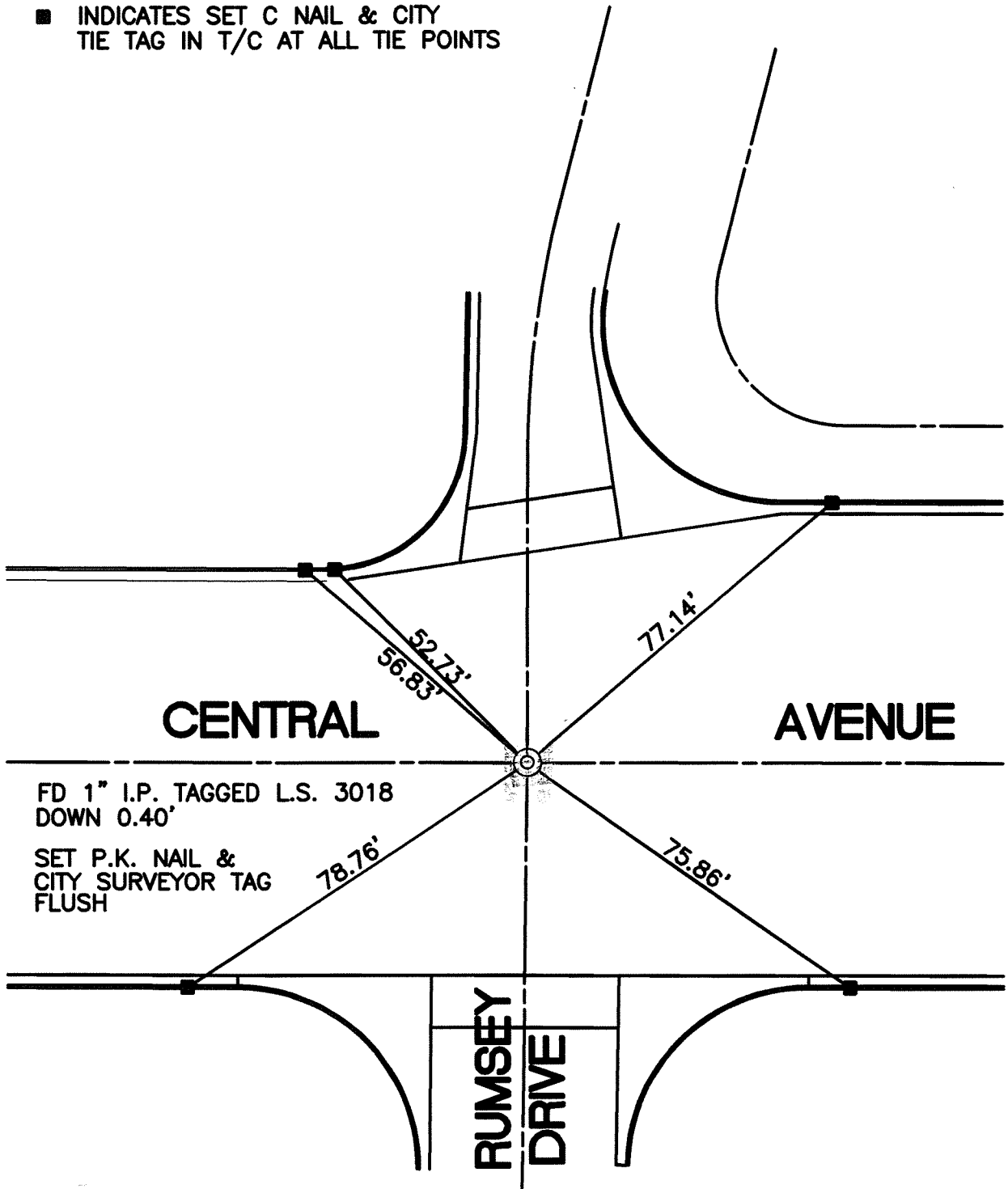


C12344, 71F

STREET: CENTRAL AVENUE

X-STREET: RUMSEY DRIVE
OFFICIAL USE ONLY

■ INDICATES SET C NAIL & CITY TIE TAG IN T/C AT ALL TIE POINTS



CENTRAL

AVENUE

RUMSEY
DRIVE

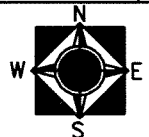
FD 1" I.P. TAGGED L.S. 3018
DOWN 0.40'

SET P.K. NAIL &
CITY SURVEYOR TAG
FLUSH

SCALE: 1"=30'
 DATE: 10/16/2009
 DRAWN BY: MSB
 F.B.: CITY TIES
 TR-Sec: T2SR5W-35

OFFICIAL TIE PLAT
CITY OF RIVERSIDE

THESE TIES ARE FOR THE PURPOSE OF PERPETUATING THE FOUND
 MONUMENTATION. NO CLAIM IS MADE AS THE RELATIONSHIP OF THE
 POINTS OR LINES SHOWN HEREON TO TRUE BOUNDARY LOCATIONS



SHEET 1 OF 1