

C12345.71F

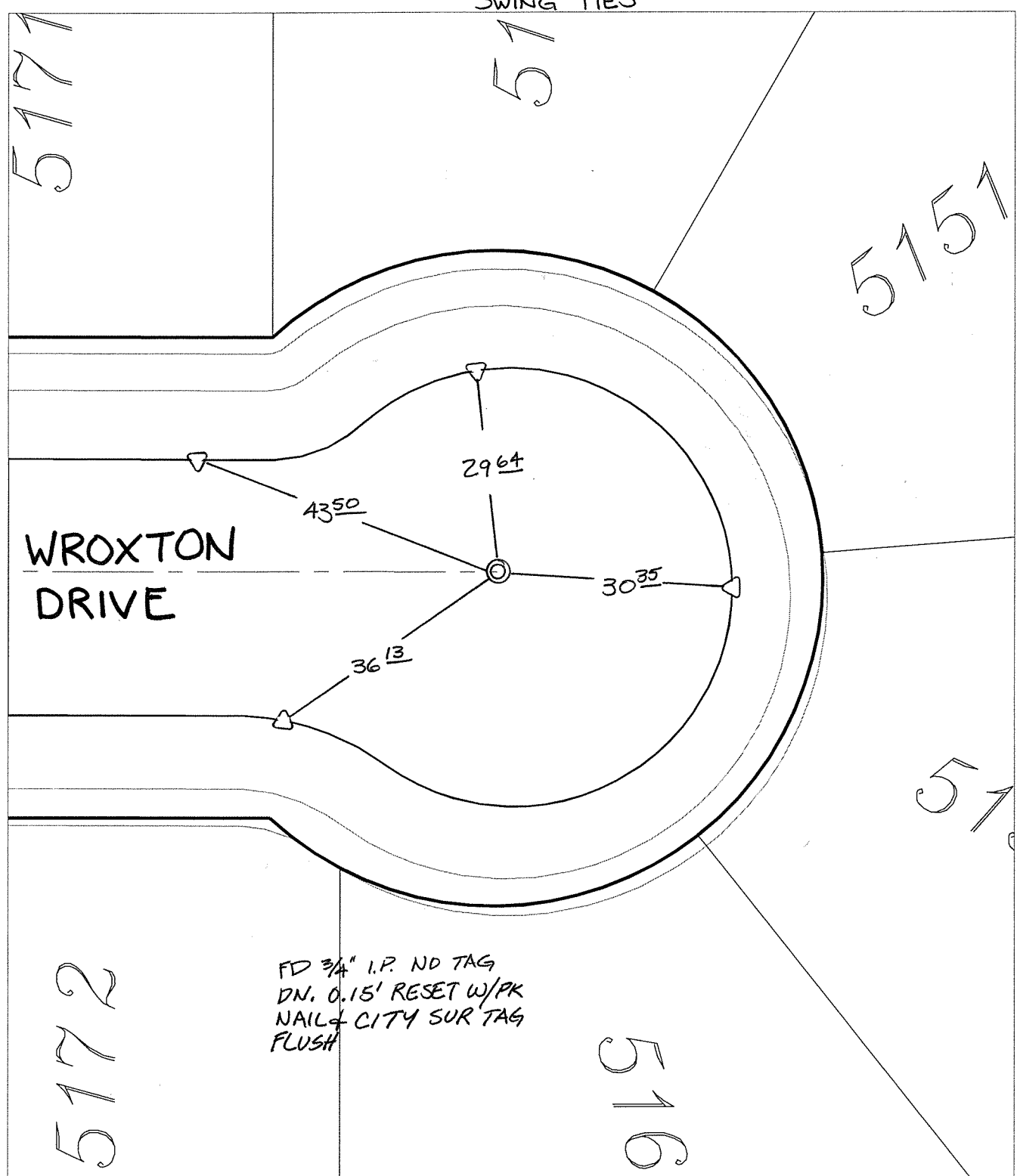
Street:

WROXTON DRIVE

X-Street:
OFFICIAL USE ONLY

CUL-DE-SAC

SWING TIES




- ✕ FD. Ramset Nail on T/C ● FD. LD. & TK. on T/C P.K. and City Engineer tag to be set @ surface after street construction is complete. (If possible)
- FD. "C" Nail on T/C ○ Set LD. & TK. on T/C

Scale: 1" = 20'
 Date: 04/09/09
 Drawn by: pw
 F.B.:
 TR-Sec: T2SR5W-28

OFFICIAL TIE PLAT
CITY OF RIVERSIDE

These ties are for the purpose of perpetuating the found monumentation. No claim is made as to the relationship of the points or lines shown hereon to true boundary locations.



Sheet 1 of 1
 Cadme MB: 37-8