

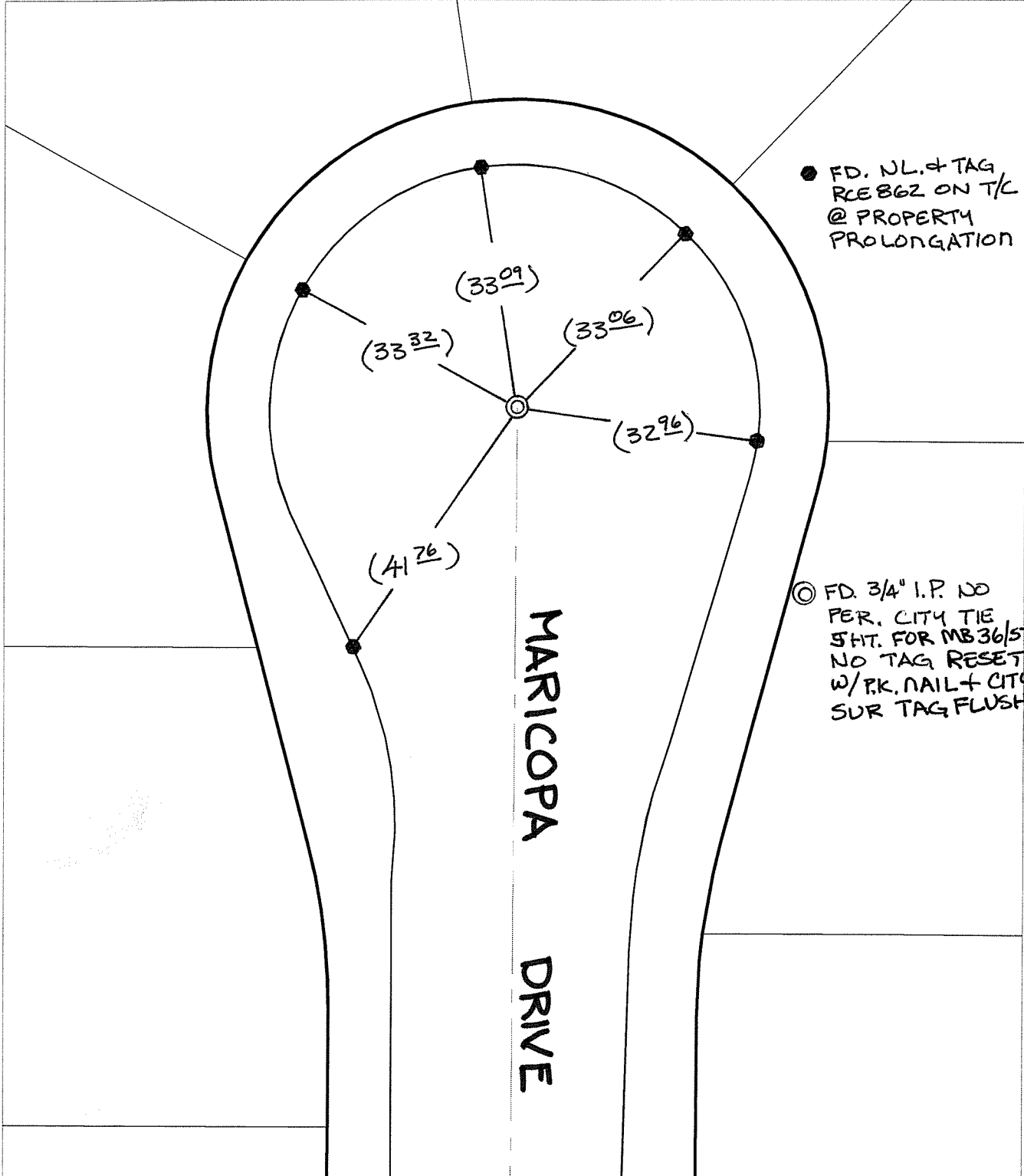
Street:

MARICOPA DRIVE

X-Street:  
OFFICIAL USE ONLY

CUL-DE-SAC

SWING TIES



● FD. NL. + TAG  
RCE 862 ON T/C  
@ PROPERTY  
PROLONGATION

◎ FD. 3/4" I.P. NO  
PER. CITY TIE  
5' HT. FOR MB 36/57  
NO TAG RESET  
W/P.K. NAIL + CITY  
SUR TAG FLUSH

- ✕ FD. Ramset Nail on T/C
- FD. LD. & TK. on T/C
- FD. "C" Nail on T/C
- Set LD. & TK. on T/C

P.K. and City Engineer tag to be set @  
surface after street construction is  
complete. (If possible)

Scale: 1" = 20'  
 Date: 01/20/06  
 Drawn by: scurtis  
 F.B.:  
 TR-Sec: T2SR4W-21

**OFFICIAL TIE PLAT**  
**CITY OF RIVERSIDE**

*These ties are for the purpose of perpetuating the found  
 monumentation. No claim is made as to the relationship of  
 the points or lines shown hereon to true boundary locations.*



Sheet 1 of 1  
 Cadme MB: 27-8