

C 12360, 71F

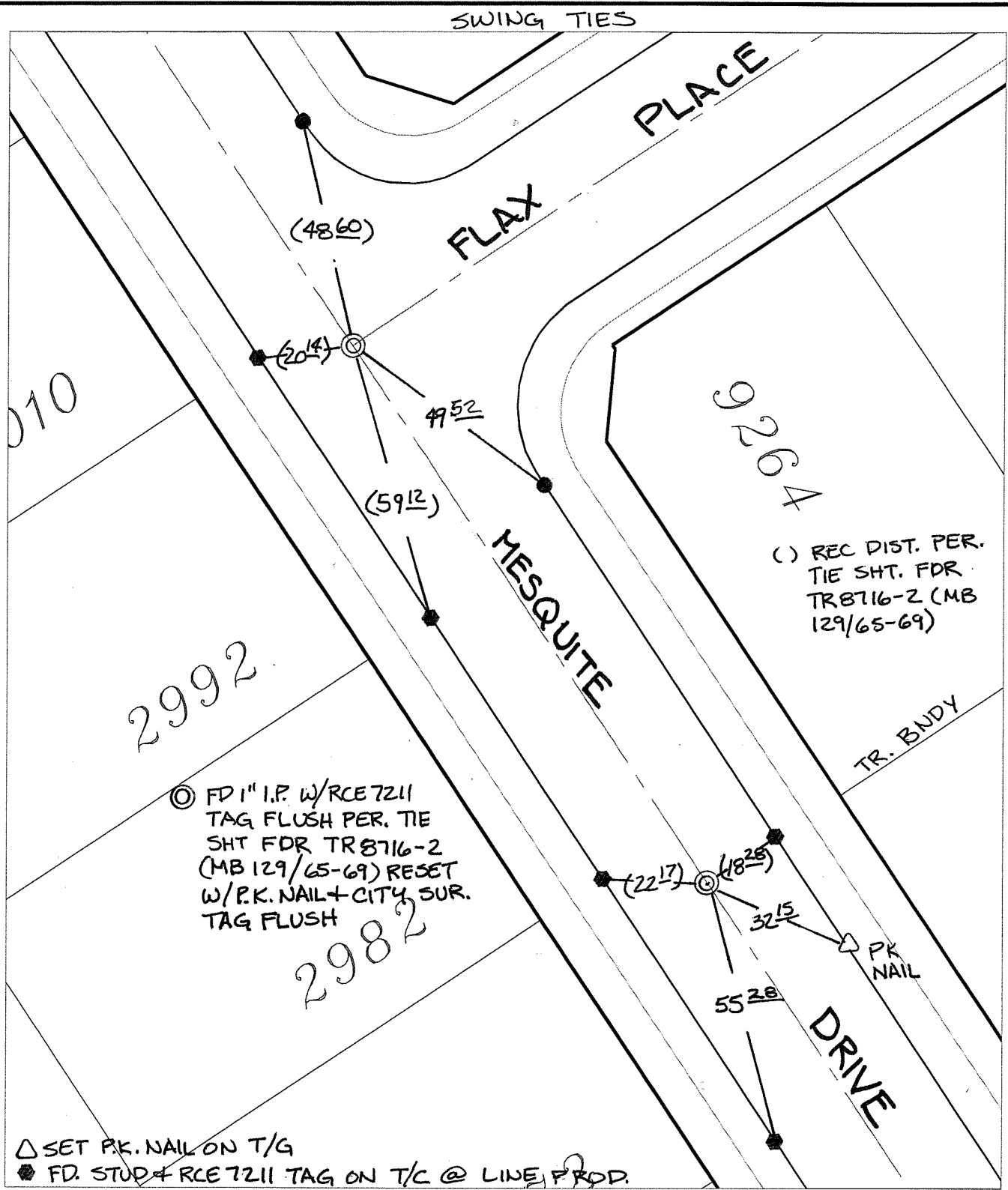
Street:

FLAX PLACE

X-Street:

MESQUITE DRIVE

OFFICIAL USE ONLY



⊙ FD 1" I.P. W/RCE 7211 TAG FLUSH PER. TIE SHT FDR TR8716-2 (MB 129/65-69) RESET W/P.K. NAIL + CITY SUR. TAG FLUSH

( ) REC DIST. PER. TIE SHT. FDR TR8716-2 (MB 129/65-69)

△ SET P.K. NAIL ON T/G  
 ● FD. STUD + RCE 7211 TAG ON T/C @ LINE PROD.

- × FD. Ramset Nail on T/C
- FD. LD. & TK. on T/C
- FD. "C" Nail on T/C
- Set LD. & TK. on T/C

P.K. and City Engineer tag to be set @ surface after street construction is complete. (If possible)

Scale: 1" = 30'  
 Date: 04/06/09  
 Drawn by: pw  
 F.B.:  
 TR-Sec: T3SR5W-17

**OFFICIAL TIE PLAT**  
**CITY OF RIVERSIDE**

*These ties are for the purpose of perpetuating the found monumentation. No claim is made as to the relationship of the points or lines shown hereon to true boundary locations.*

Sheet 1 of 1  
 Cadme MB: 81-2