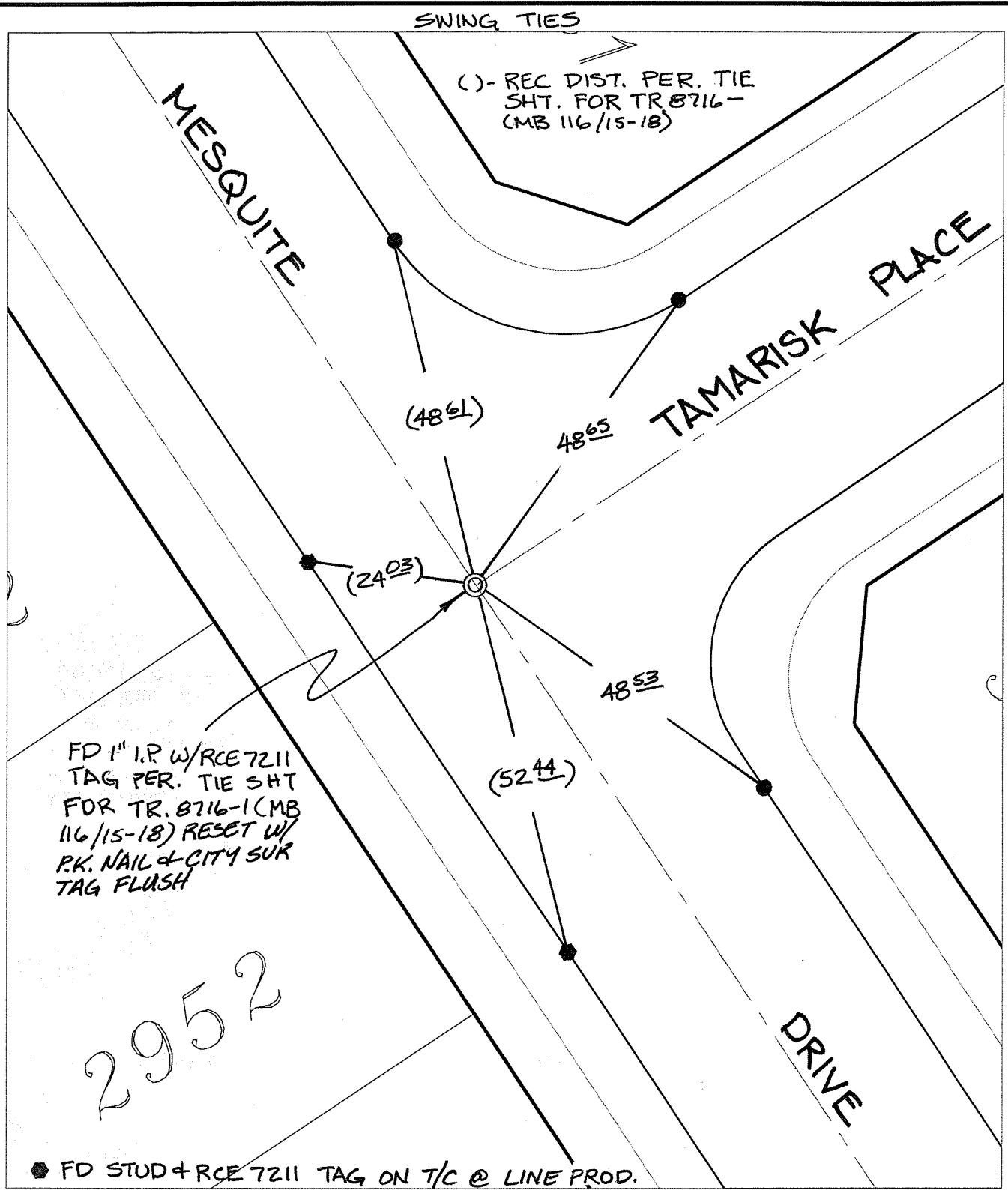


C12361.71E

Street: MESQUITE DRIVE X-Street: TAMARISK PLACE
OFFICIAL USE ONLY



FD 1" I.P. W/RCE 7211
TAG PER. TIE SHT
FOR TR. 8716-1 (MB
116/15-18) RESET W/
P.K. NAIL & CITY SUR
TAG FLUSH

2952


● FD STUD & RCE 7211 TAG ON T/C @ LINE PROD.

- ✕ FD. Ramset Nail on T/C ● FD. LD. & TK. on T/C P.K. and City Engineer tag to be set @ surface after street construction is complete. (If possible)
- FD. "C" Nail on T/C ○ Set LD. & TK. on T/C

Scale: 1" = 20'
Date: 04/06/09
Drawn by: pw
F.B.:
TR-Sec: T3SR5W-17

OFFICIAL TIE PLAT
CITY OF RIVERSIDE

These ties are for the purpose of perpetuating the found monumentation. No claim is made as to the relationship of the points or lines shown hereon to true boundary locations.



Sheet 1 of 1
Cadme MB: 81-2