

C12364. T1E

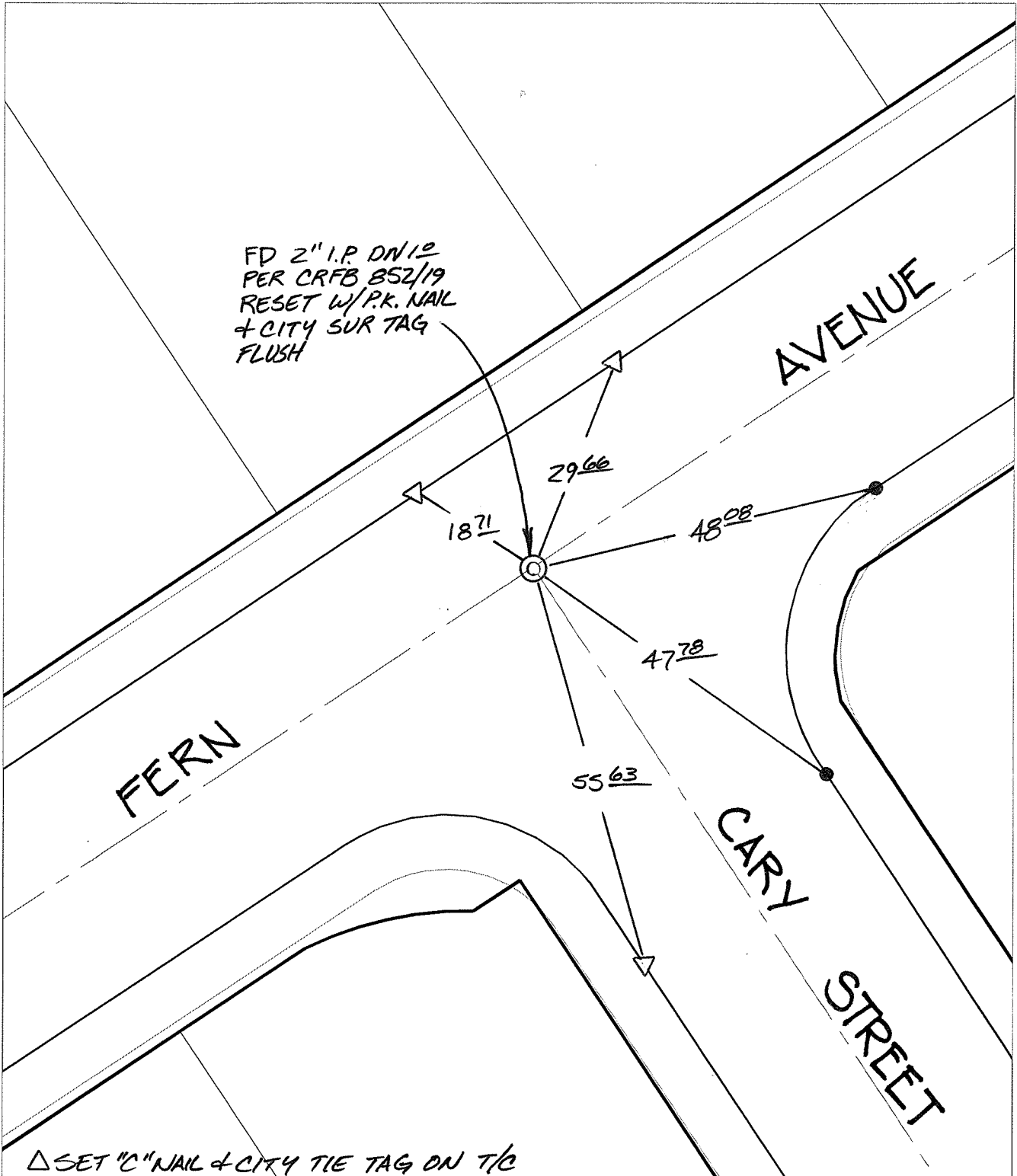
Street:

CARY STREET

X-Street:
OFFICIAL USE ONLY

FERN AVENUE

SWING TIES



FD 2" I.P. DN/12
PER CRFB 852/19
RESET W/P.K. NAIL
& CITY SUR TAG
FLUSH

△ SET "C" NAIL & CITY TIE TAG ON T/C

- × FD. Ramset Nail on T/C ● FD. LD. & TK. on T/C
- FD. "C" Nail on T/C ○ Set LD. & TK. on T/C

P.K. and City Engineer tag to be set @
surface after street construction is
complete. (If possible)

Scale: 1" = 20'

Date: 06/29/10

Drawn by: pw

F.B.:

TR-Sec: T3SR5W-9

OFFICIAL TIE PLAT

CITY OF RIVERSIDE

*These ties are for the purpose of perpetuating the found
monumentation. No claim is made as to the relationship of
the points or lines shown hereon to true boundary locations.*



Sheet 1 of 1

Cadme MB: 68-3