

C12366. TIF

Street:

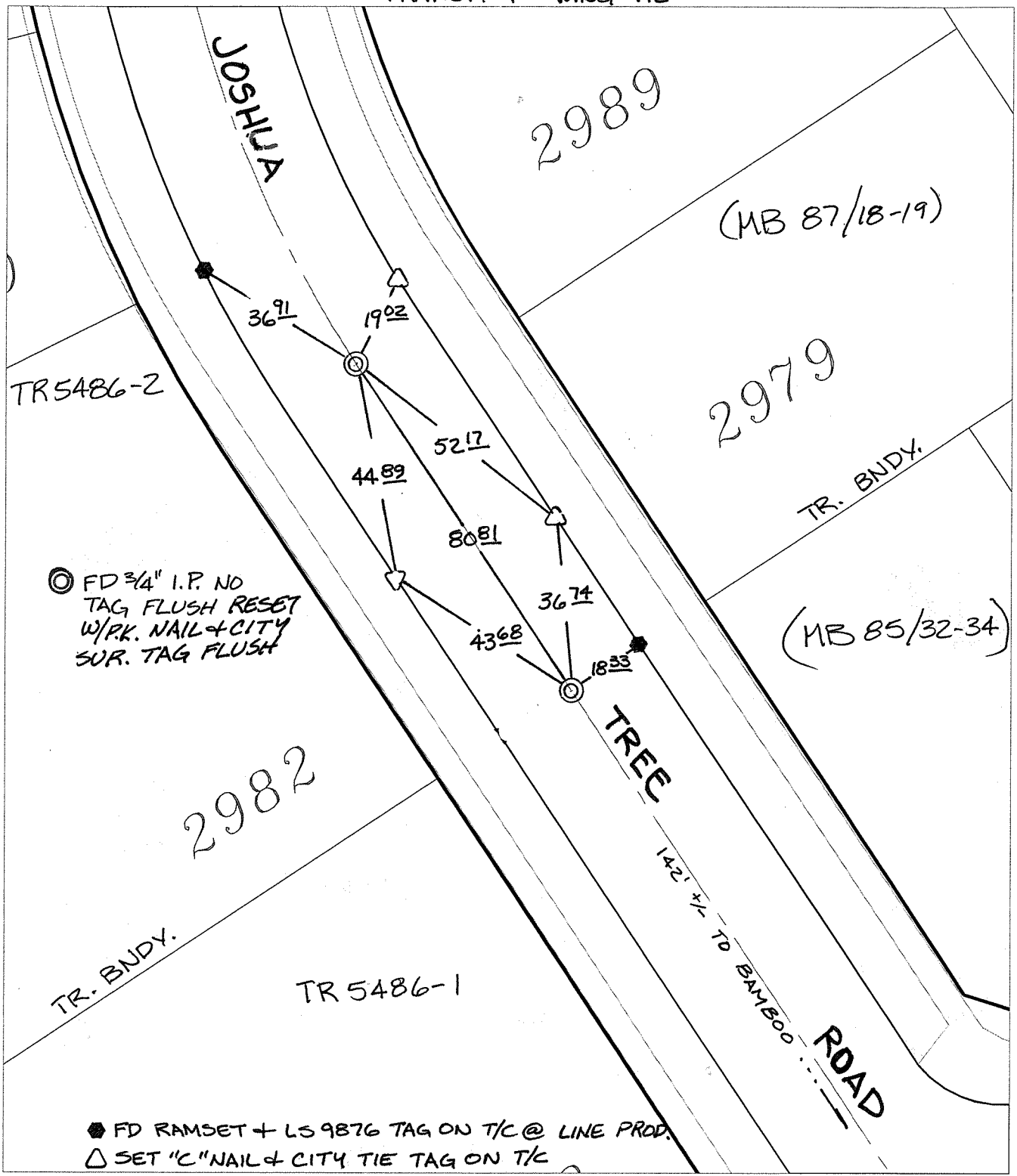
JOSHUA TREE ROAD

X-Street:

E.C. & TR. BNDY.

OFFICIAL USE ONLY

TRANSIT & SWING TIES




◎ FD 3/4" I.P. NO TAG FLUSH RESET W/P.K. NAIL & CITY SUR. TAG FLUSH  
 ◎ FD RAMSET + LS 9876 TAG ON T/C @ LINE PROD.  
 △ SET "C" NAIL & CITY TIE TAG ON T/C

- ✕ FD. Ramset Nail on T/C      ● FD. LD. & TK. on T/C      P.K. and City Engineer tag to be set @ surface after street construction is complete. (If possible)
- FD. "C" Nail on T/C      ○ Set LD. & TK. on T/C

Scale: 1" = 30'  
 Date: 04/06/09  
 Drawn by: pw  
 F.B.:  
 TR-Sec: T3SR5W-17

**OFFICIAL TIE PLAT**  
**CITY OF RIVERSIDE**

*These ties are for the purpose of perpetuating the found monumentation. No claim is made as to the relationship of the points or lines shown hereon to true boundary locations.*



Sheet 1 of 1  
 Cadme MB: 81-2