

C12367. TIF

Street:

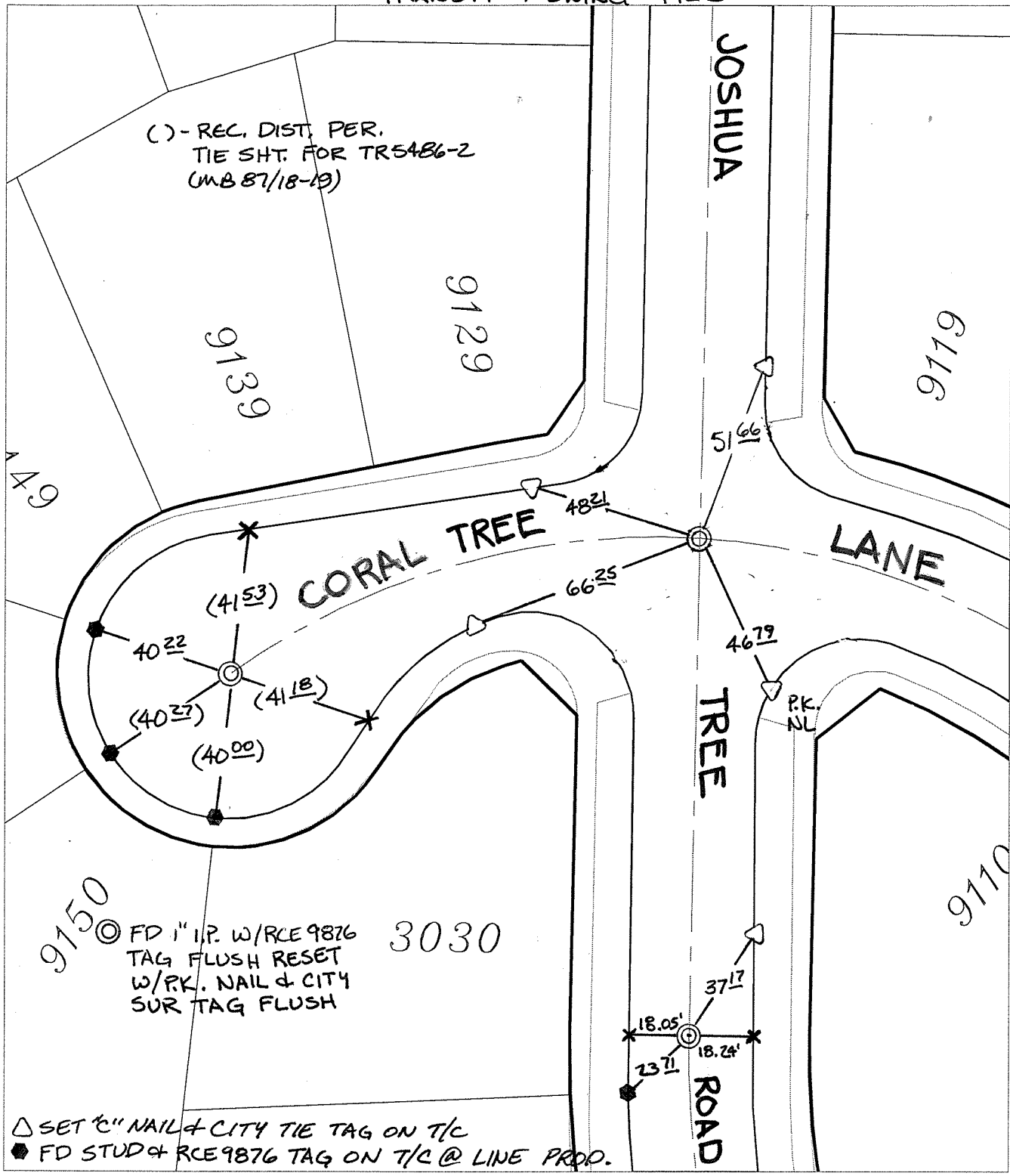
JOSHUA TREE ROAD

X-Street:

CORAL TREE LANE

OFFICIAL USE ONLY

TRANSIT + SWING TIES



() - REC. DIST. PER. TIE SHT. FOR TR5486-2 (MB 87/18-19)

FD 1" I.P. W/RCE 9876 TAG FLUSH RESET W/PK. NAIL & CITY SUR TAG FLUSH

△ SET "C" NAIL & CITY TIE TAG ON T/C
● FD STUD & RCE 9876 TAG ON T/C @ LINE PROD.

× FD. Ramset Nail on T/C ● FD. LD. & TK. on T/C
■ FD. "C" Nail on T/C ○ Set LD. & TK. on T/C

P.K. and City Engineer tag to be set @ surface after street construction is complete. (If possible)

Scale: 1" = 40'
Date: 04/06/09
Drawn by: pw
F.B.:
TR-Sec: T3SR5W-17

OFFICIAL TIE PLAT

CITY OF RIVERSIDE

These ties are for the purpose of perpetuating the found monumentation. No claim is made as to the relationship of the points or lines shown hereon to true boundary locations.



Sheet 1 of 1
Cadme MB: 66-8