

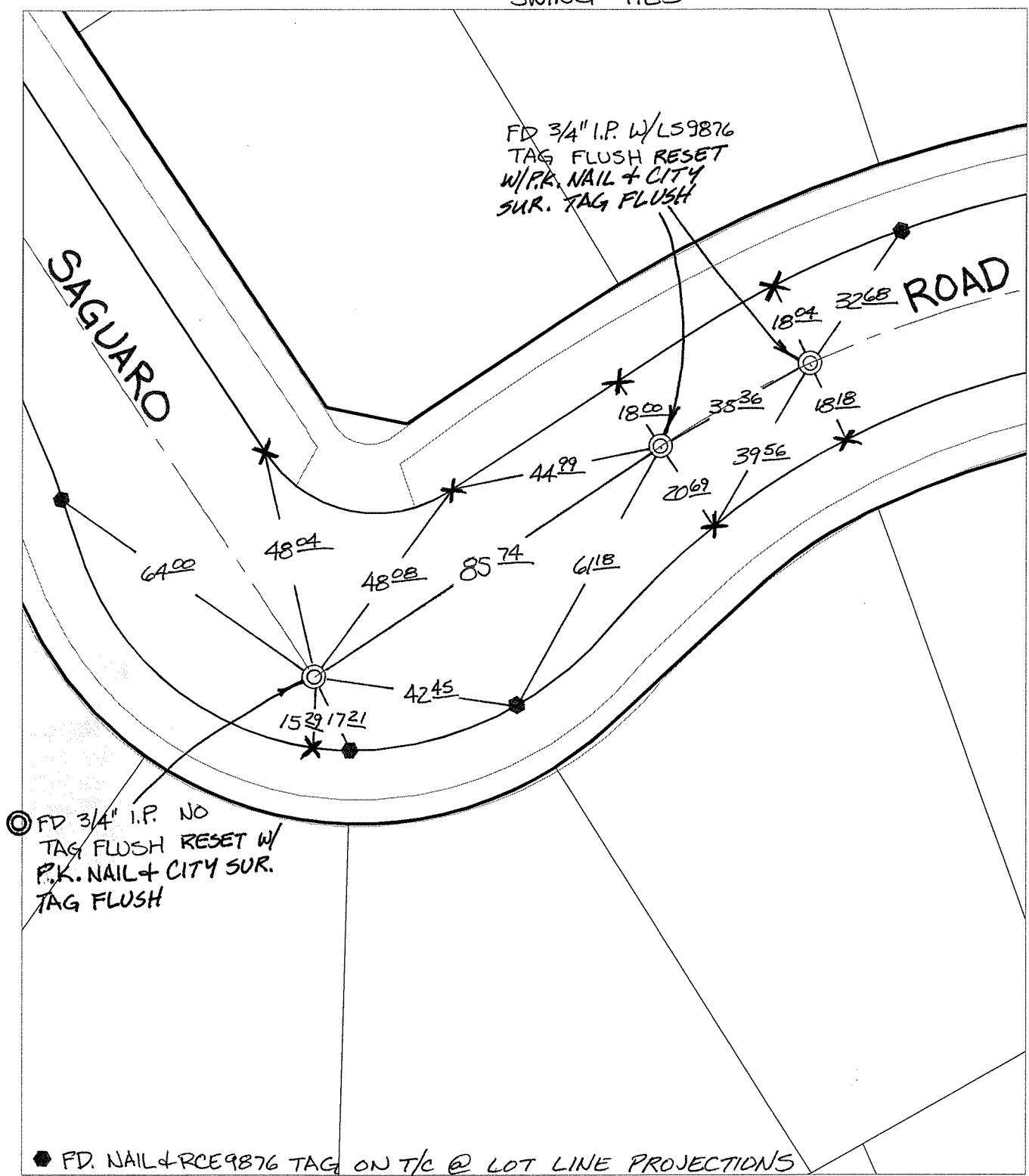
Street: SAGUARO ROAD  
X-Street: KNUCKLE S. OF NOPAL  
OFFICIAL USE ONLY

SWING TIES

FD 3/4" I.P. W/LS9876  
TAG FLUSH RESET  
W/P.K. NAIL + CITY  
SUR. TAG FLUSH

SAGUARO

ROAD



FD 3/4" I.P. NO  
TAG FLUSH RESET W/  
P.K. NAIL + CITY SUR.  
TAG FLUSH

FD. NAIL & RCE9876 TAG ON T/C @ LOT LINE PROJECTIONS

- ✕ FD. Ramset Nail on T/C
- FD. LD. & TK. on T/C
- FD. "C" Nail on T/C
- Set LD. & TK. on T/C

P.K. and City Engineer tag to be set @  
surface after street construction is  
complete. (If possible)

Scale: 1" = 30'  
 Date: 06/30/09  
 Drawn by: pw  
 F.B.:  
 TR-Sec: T3SR5W-17

# OFFICIAL TIE PLAT

## CITY OF RIVERSIDE

*These ties are for the purpose of perpetuating the found  
 monumentation. No claim is made as to the relationship of  
 the points or lines shown hereon to true boundary locations.*



Sheet 1 of 1  
 Cadme MB: 66-8