

C12371.TIF

Street:

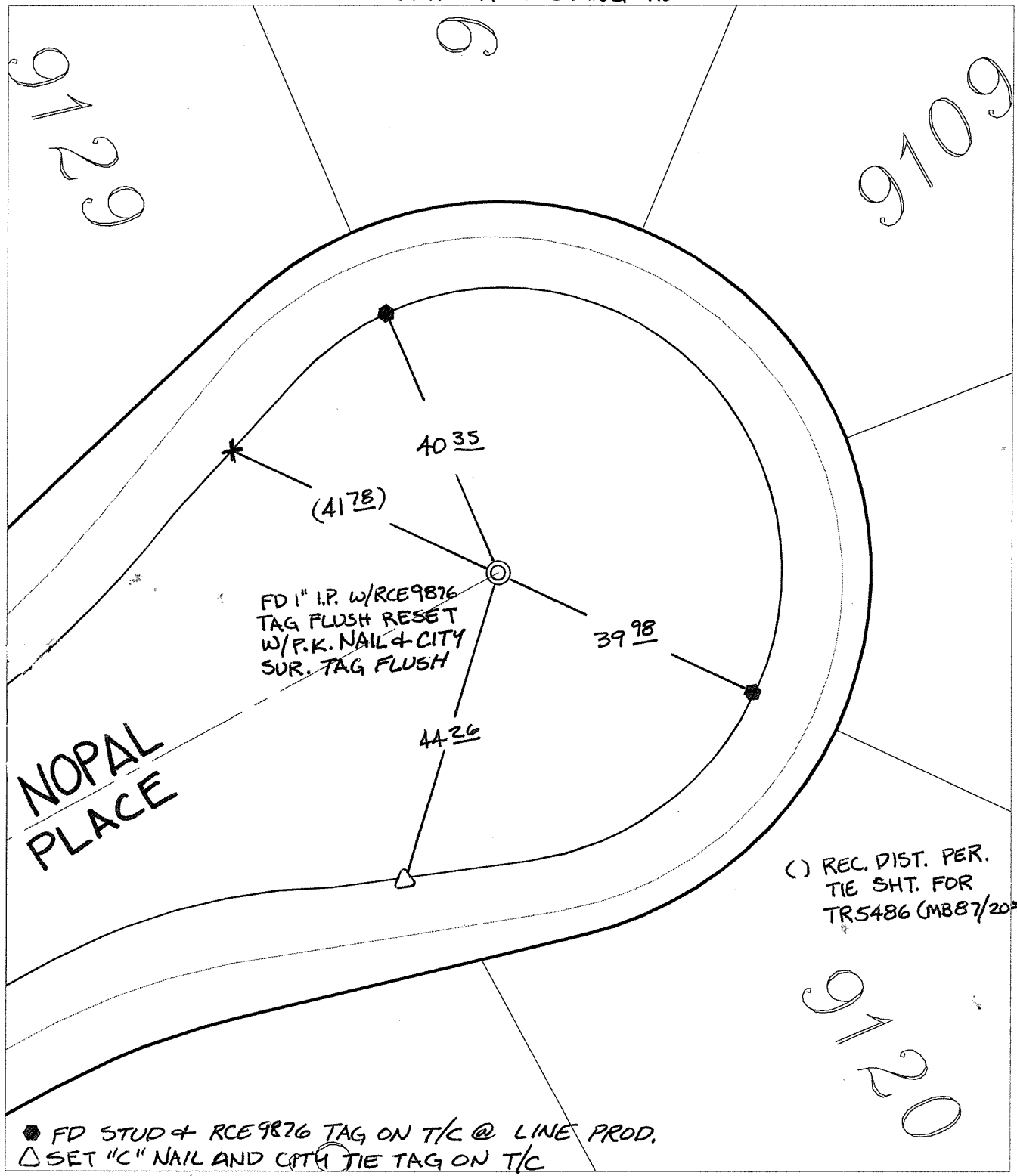
NOPAL PLACE

X-Street:

OFFICIAL USE ONLY

CUL-DE-SAC

TRANSIT & SWING TIES



() REC. DIST. PER. TIE SHT. FOR TR5486 (MB87/20-2)


◆ FD STUD & RCE9876 TAG ON T/C @ LINE PROD.
 △ SET "C" NAIL AND CITY TIE TAG ON T/C

- ✕ FD. Ramset Nail on T/C ● FD. LD. & TK. on T/C P.K. and City Engineer tag to be set @ surface after street construction is complete. (If possible)
- FD. "C" Nail on T/C ○ Set LD. & TK. on T/C

Scale: 1" = 20'
 Date: 04/06/09
 Drawn by: pw
 F.B.:
 TR-Sec: T3SR5W-17

OFFICIAL TIE PLAT
 CITY OF RIVERSIDE

These ties are for the purpose of perpetuating the found monumentation. No claim is made as to the relationship of the points or lines shown hereon to true boundary locations.



Sheet 1 of 1
 Cadme MB: 66-8