

C12373. TIF

Street: NOPAL PLACE
X-Street: HOYA PLACE
OFFICIAL USE ONLY

SWING TIES

TR. 5486

RCE 9876 TAG ON T/C

TR. 30741

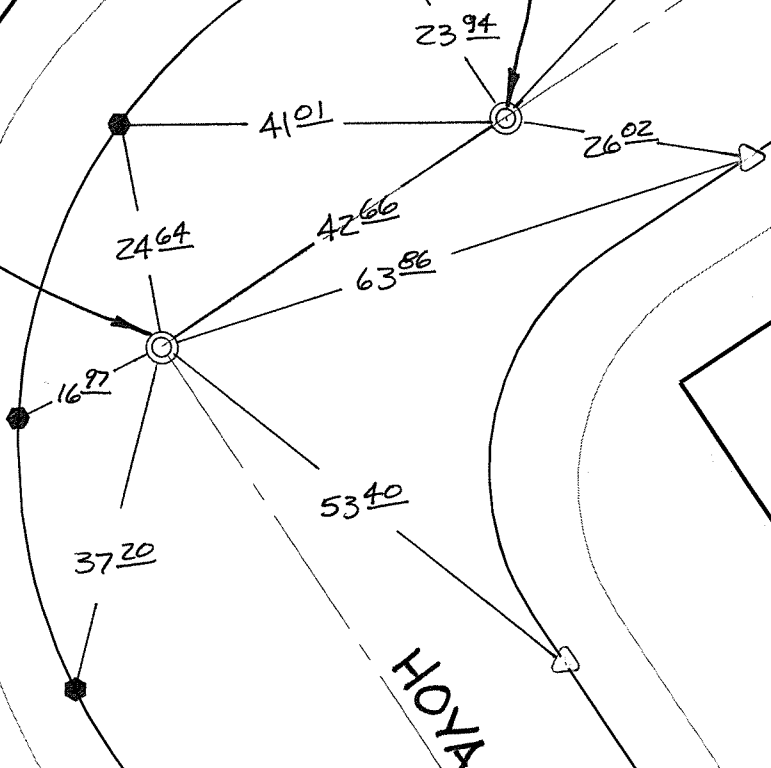
● FD STUD + RCE 7211 TAG ON T/C @ LINE PROD. ULESS NOTE

FD 1" I.P. TAGGED RCE 9876 PER. TR5486 (MB 87/20-21) FLUSH RESET W/PK. NAIL + CITY SUR TAG FLUSH

NOPAL PLACE

72 46

FD. 1" I.P. TAGGED RCE 7211 PER. TR. #30741 (MB 365/49-53) FLUSH RESET W/ PK. NAIL + CITY SUR. TAG FLUSH



(MB 87/20-21)

TR. BNDY.

HOYA PLACE

(MB 365/49-53)

△ SET "C" NAIL + CITY TIE TAG ON T/C

- × FD. Ramset Nail on T/C
- FD. LD. & TK. on T/C
- FD. "C" Nail on T/C
- Set LD. & TK. on T/C

P.K. and City Engineer tag to be set @ surface after street construction is complete. (If possible)

Scale: 1" = 20'
 Date: 06/29/09
 Drawn by: pw
 F.B.:
 TR-Sec: T3SR5W-17

OFFICIAL TIE PLAT

CITY OF RIVERSIDE



These ties are for the purpose of perpetuating the found monumentation. No claim is made as to the relationship of the points or lines shown hereon to true boundary locations.

Sheet 1 of 1
 Cadme MB: 66-8