

C12380, T1F

Street:

JOSHUA TREE ROAD

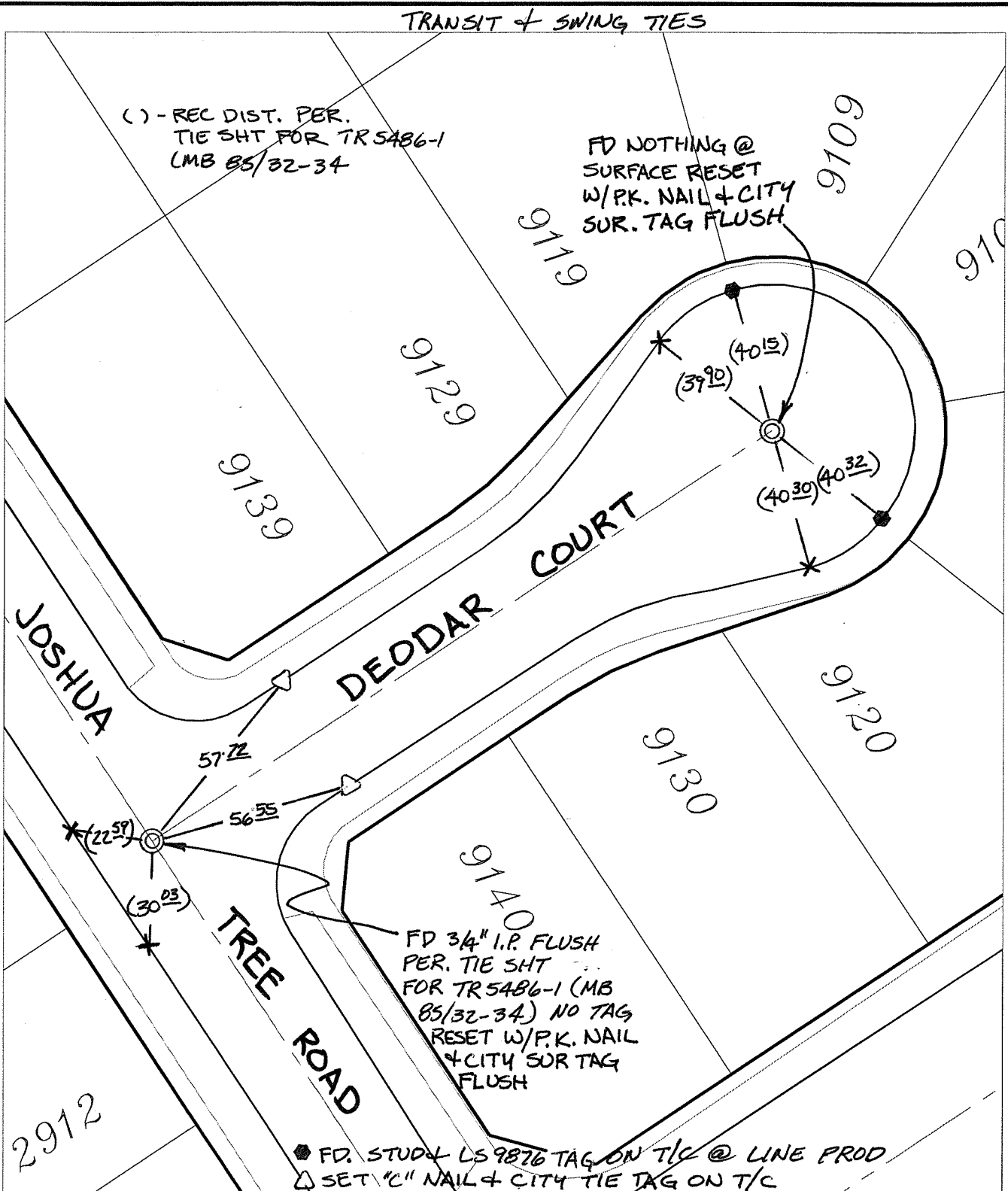
X-Street: OFFICIAL USE ONLY

DEODAR COURT

TRANSIT & SWING TIES

() - REC DIST. PER. TIE SHT FOR TR 5486-1 (MB 85/32-34)

FD NOTHING @ SURFACE RESET W/P.K. NAIL & CITY SUR. TAG FLUSH



FD 3/4" I.P. FLUSH PER. TIE SHT FOR TR 5486-1 (MB 85/32-34) NO TAG RESET W/P.K. NAIL & CITY SUR TAG FLUSH

● FD. STUD & LS 9876 TAG ON T/C @ LINE PROD
△ SET "C" NAIL & CITY TIE TAG ON T/C

- ✕ FD. Ramset Nail on T/C
- FD. LD. & TK. on T/C
- FD. "C" Nail on T/C
- Set LD. & TK. on T/C

P.K. and City Engineer tag to be set @ surface after street construction is complete. (If possible)

Scale: 1" = 40'

Date: 04/06/09

Drawn by: pw

F.B.:

TR-Sec: T3SR5W-17

OFFICIAL TIE PLAT

CITY OF RIVERSIDE

These ties are for the purpose of perpetuating the found monumentation. No claim is made as to the relationship of the points or lines shown hereon to true boundary locations.



Sheet 1 of 1

Cadme MB: 81-2