

SWING TIES

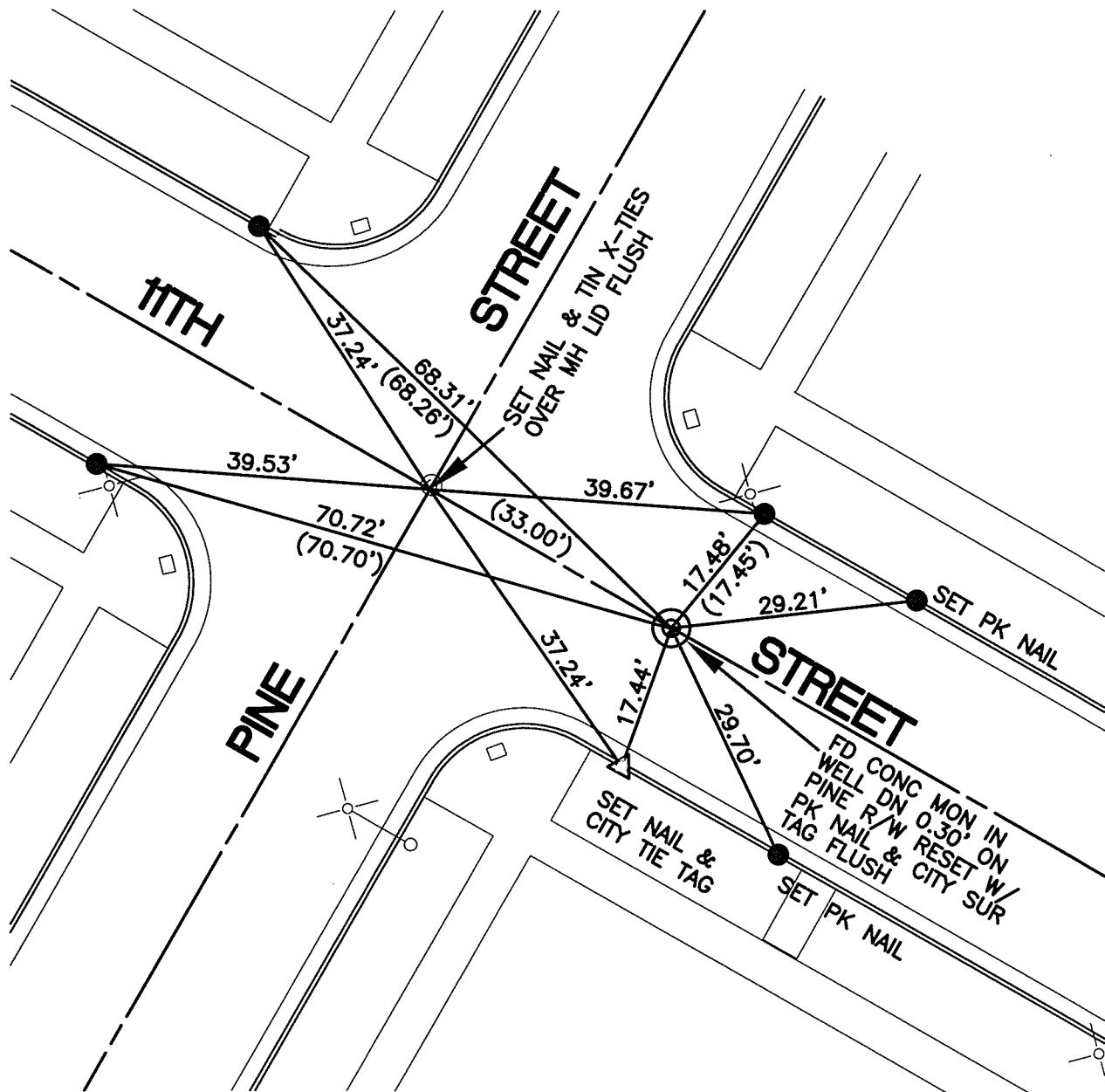
REF: CRFB 696/32

C12392.TIF

STREET: 11TH STREET

OFFICIAL USE ONLY

X-STREET: PINE STREET



● — FOUND LEAD & TACK IN T.C.
UNLESS OTHERWISE NOTED

SCALE: 1"=20'

DATE: 3/10/11

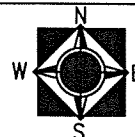
DRAWN BY: CURT

F.B.:

SEC: 23 T.2S.,R.5W

OFFICIAL TIE PLAT CITY OF RIVERSIDE

THESE TIES ARE FOR THE PURPOSE OF PERPETUATING THE FOUND MONUMENTATION. NO CLAIM IS MADE AS THE RELATIONSHIP OF THE POINTS OR LINES SHOWN HEREON TO TRUE BOUNDARY LOCATIONS



SHEET 1 OF 1