

Street:

LINCOLN AVENUE TR BNDY

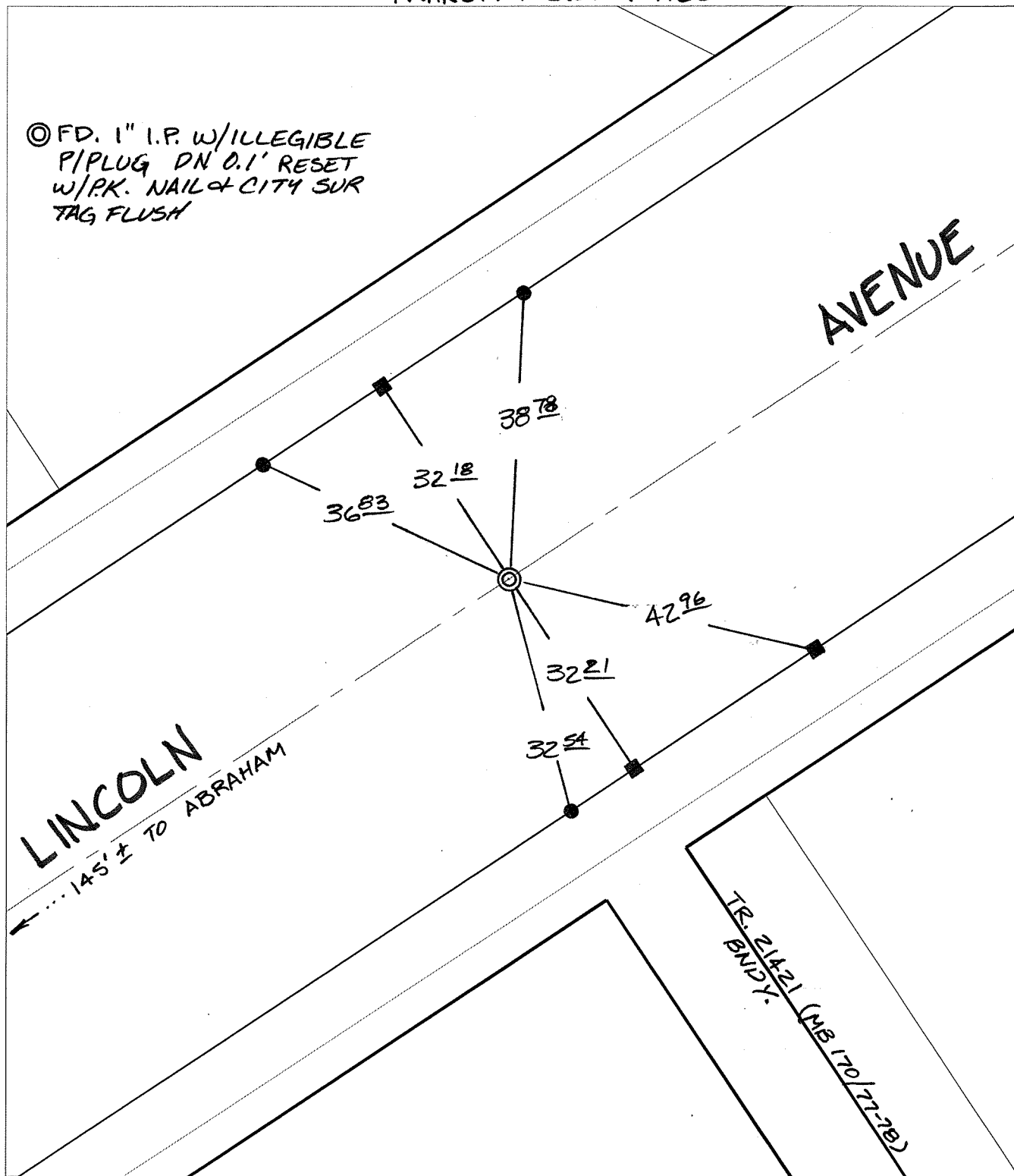
X-Street:

E OF ABRAHAM

OFFICIAL USE ONLY

TRANSIT + SWING TIES

⊙ FD. 1" I.P. W/ILLEGIBLE  
PIPLUG DN 0.1' RESET  
W/P.K. NAIL & CITY SUR  
TAG FLUSH



- ⊗ FD. Ramset Nail on T/C    ● FD. LD. & TK. on T/C
- FD. "C" Nail on T/C      ○ Set LD. & TK. on T/C

P.K. and City Engineer tag to be set @ surface after street construction is complete. (If possible)

Scale: 1" = 20'

Date: 01/21/11

Drawn by: pw

F.B.:

TR-Sec: T3SR5W-17

# OFFICIAL TIE PLAT

CITY OF RIVERSIDE

*These ties are for the purpose of perpetuating the found monumentation. No claim is made as to the relationship of the points or lines shown hereon to true boundary locations.*



Sheet 1 of 1

Cadme MB: 81-2