

C12408.TIF

Street:

PERCIVAL DRIVE

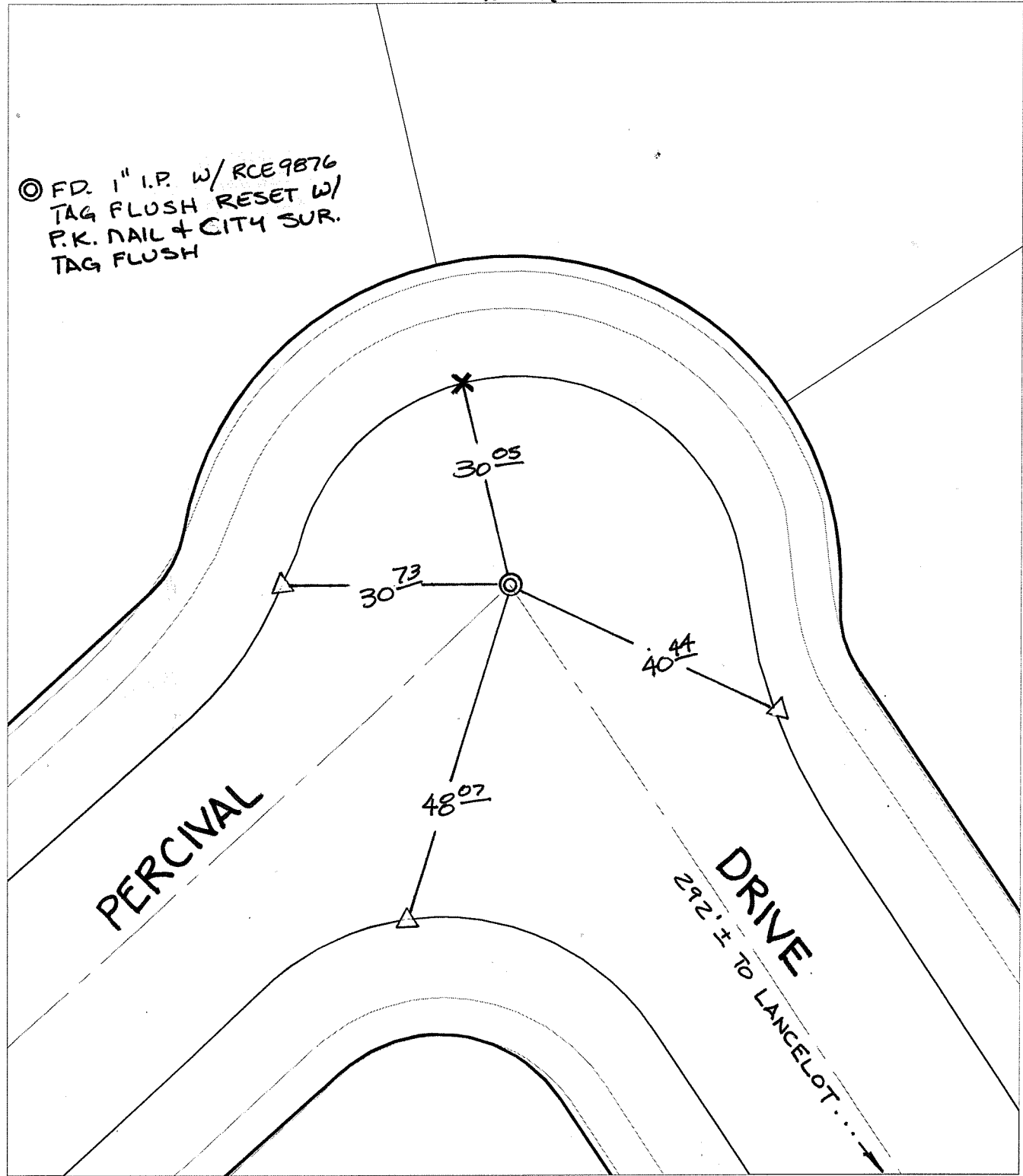
X-Street:

KNUCKLE

OFFICIAL USE ONLY

SWING TIES

⊙ FD. 1" I.P. w/ RCE9876  
TAG FLUSH RESET w/  
P.K. NAIL & CITY SUR.  
TAG FLUSH



- ✕ FD. Ramset Nail on T/C
- FD. "C" Nail on T/C

- FD. LD. & TK. on T/C
- Set LD. & TK. on T/C

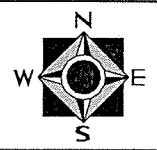
P.K. and City Engineer tag to be set @ surface after street construction is complete. (If possible)

Scale: 1" = 20'  
 Date: 02/08/06  
 Drawn by: survey  
 F.B.:  
 TR-Sec: T3SR5W-2

## OFFICIAL TIE PLAT

### CITY OF RIVERSIDE

*These ties are for the purpose of perpetuating the found monumentation. No claim is made as to the relationship of the points or lines shown hereon to true boundary locations.*



Sheet 1 of 1  
 Cadme MB: 54-8