

Street:

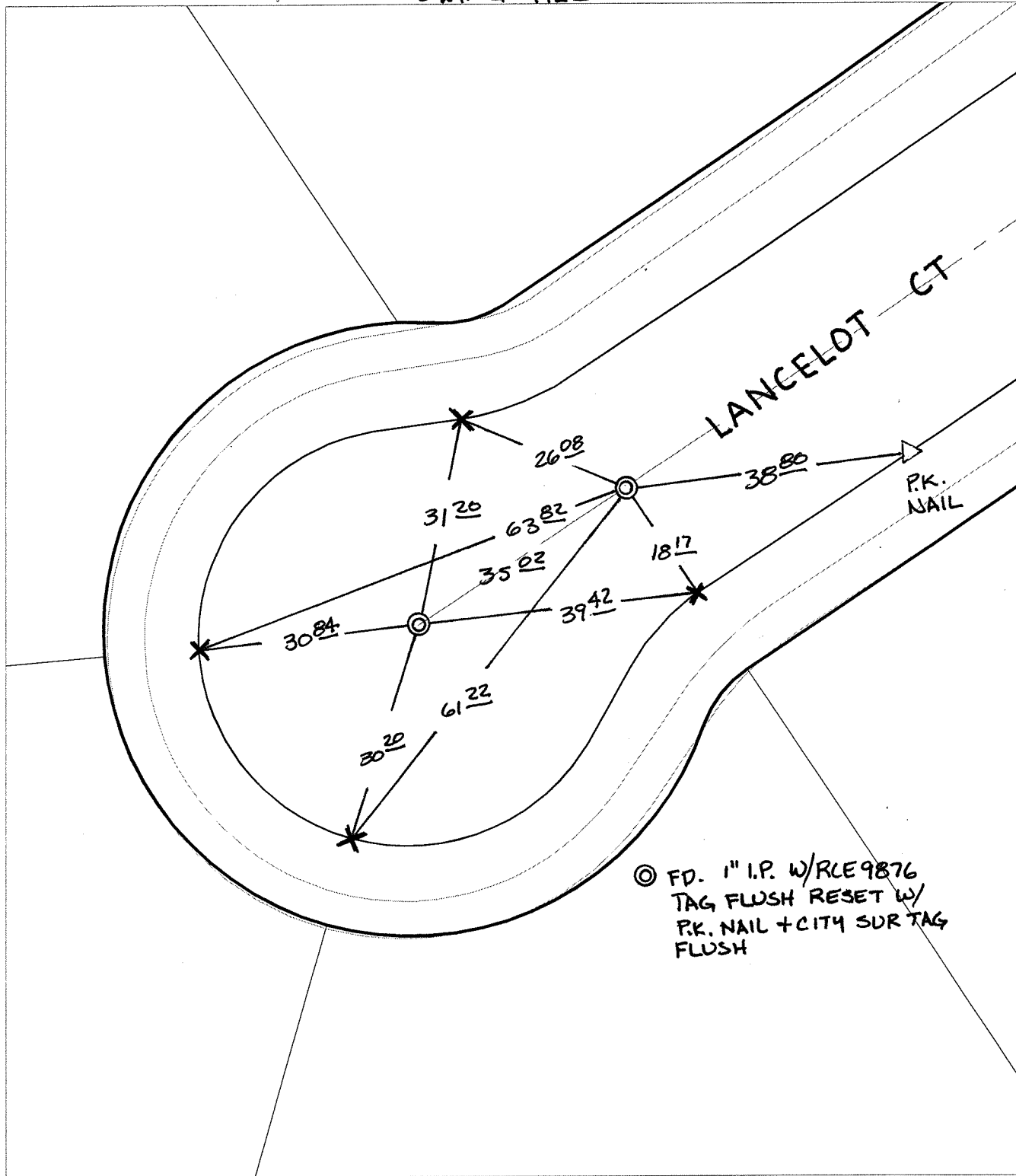
LANCELOT COURT

OFFICIAL USE ONLY

X-Street:

CUL-DE-SAC

SWING TIES



◎ FD. 1" I.P. W/RLE9876  
TAG FLUSH RESET W/  
P.K. NAIL + CITY SUR TAG  
FLUSH

- ✕ FD. Ramset Nail on T/C
- FD. LD. & TK. on T/C
- FD. "C" Nail on T/C
- Set LD. & TK. on T/C

P.K. and City Engineer tag to be set @  
surface after street construction is  
complete. (If possible)

Scale: 1" = 20'  
Date: 02/08/06  
Drawn by: survey  
F.B.:  
TR-Sec: T3SR5W-2

## OFFICIAL TIE PLAT

### CITY OF RIVERSIDE

*These ties are for the purpose of perpetuating the found monumentation. No claim is made as to the relationship of the points or lines shown hereon to true boundary locations.*



Sheet 1 of 1  
Cadme MB: 54-8