

C12414.71E

Street:

BEVIN STREET

OFFICIAL USE ONLY

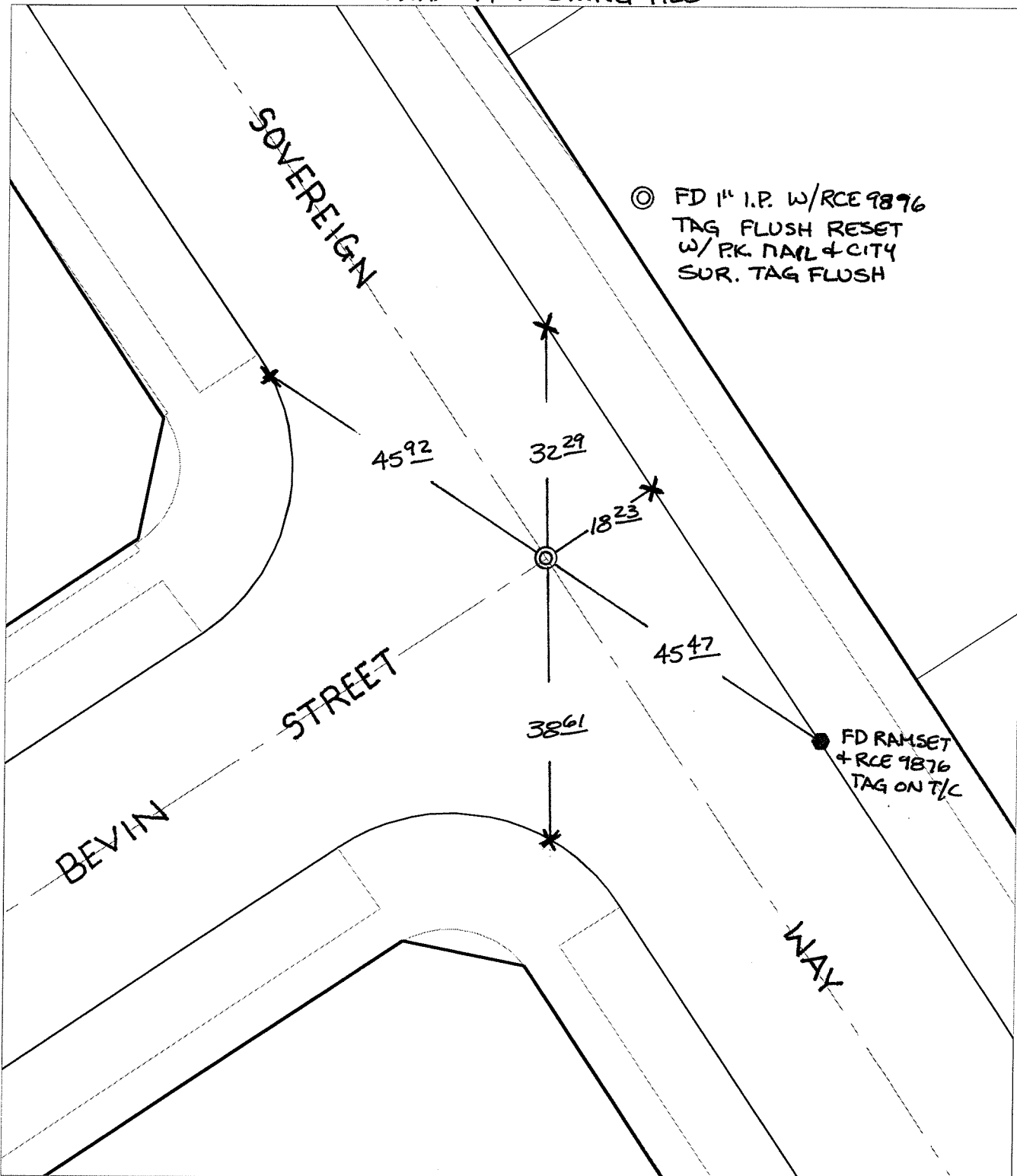
X-Street:

SOVEREIGN WAY

TRANSIT + SWING TIES

⊙ FD 1" I.P. W/RCE 9876
TAG FLUSH RESET
W/ P.K. NAIL + CITY
SUR. TAG FLUSH

● FD RAMSET
+ RCE 9876
TAG ON T/C



- ✕ FD. Ramset Nail on T/C
- FD. LD. & TK. on T/C
- FD. "C" Nail on T/C
- Set LD. & TK. on T/C

P.K. and City Engineer tag to be set @ surface after street construction is complete. (If possible)

Scale: 1" = 20'
 Date: 02/08/06
 Drawn by: survey
 F.B.:
 TR-Sec: T3SR5W-2

OFFICIAL TIE PLAT

CITY OF RIVERSIDE

These ties are for the purpose of perpetuating the found monumentation. No claim is made as to the relationship of the points or lines shown hereon to true boundary locations.



Sheet 1 of 1
 Cadme MB: 69-2