

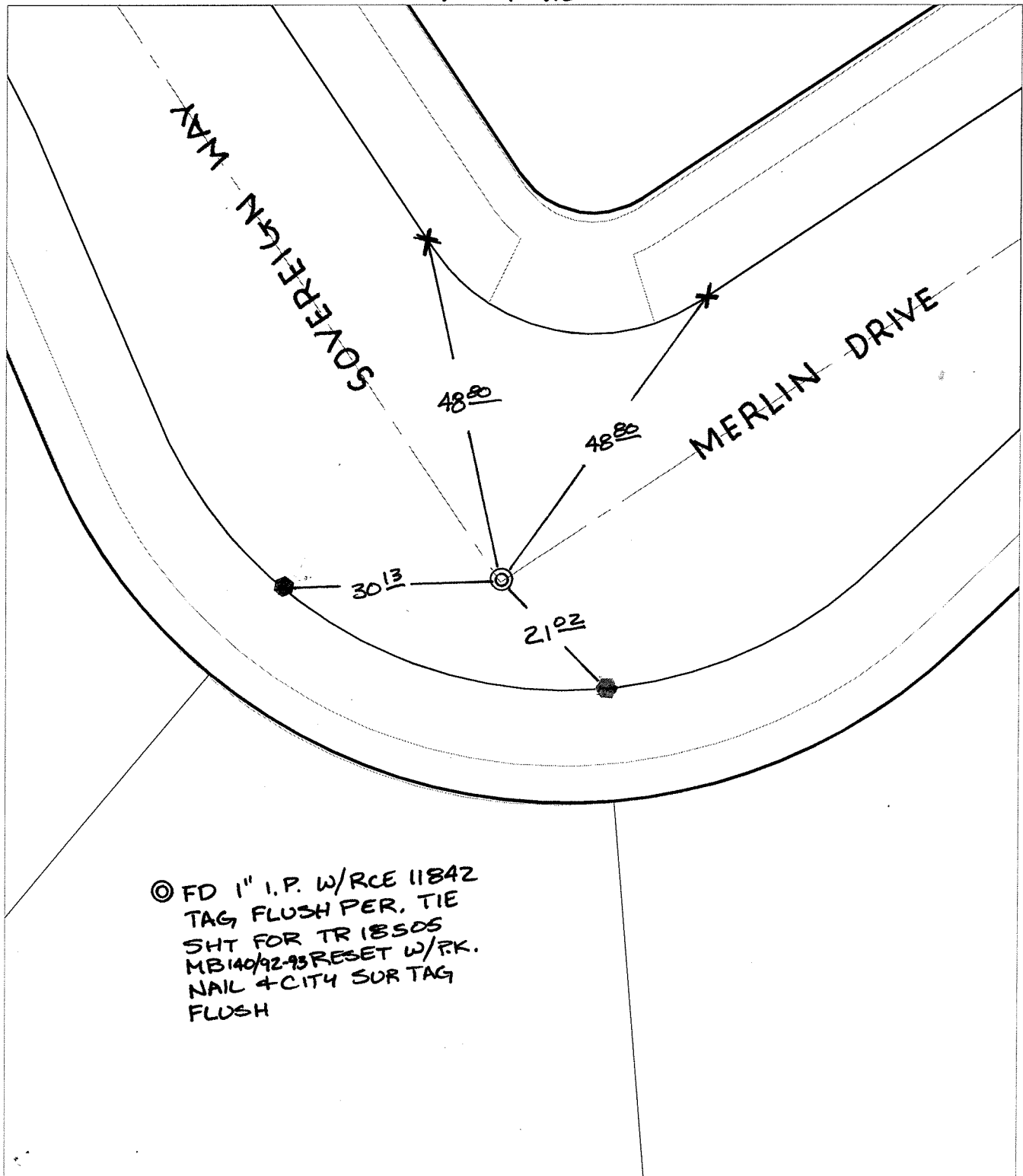
Street:

MERLIN DRIVE

X-Street:
OFFICIAL USE ONLY

SOVEREIGN WAY

SWING TIES



© FD 1" I.P. W/RCE 11842
 TAG FLUSH PER. TIE
 SHT FOR TR 1850S
 MB140/92-93 RESET W/P.K.
 NAIL + CITY SUR TAG
 FLUSH

- ✕ FD. Ramset Nail on T/C ● FD. LD. & TK. on T/C
- FD. "C" Nail on T/C ○ Set LD. & TK. on T/C

P.K. and City Engineer tag to be set @
 surface after street construction is
 complete. (If possible)

Scale: 1" = 20'
 Date: 02/08/06
 Drawn by: survey
 F.B.:
 TR-Sec: T3SR5W-2

OFFICIAL TIE PLAT

CITY OF RIVERSIDE

*These ties are for the purpose of perpetuating the found
 monumentation. No claim is made as to the relationship of
 the points or lines shown hereon to true boundary locations.*



Sheet 1 of 1
 Cadme MB: 69-2