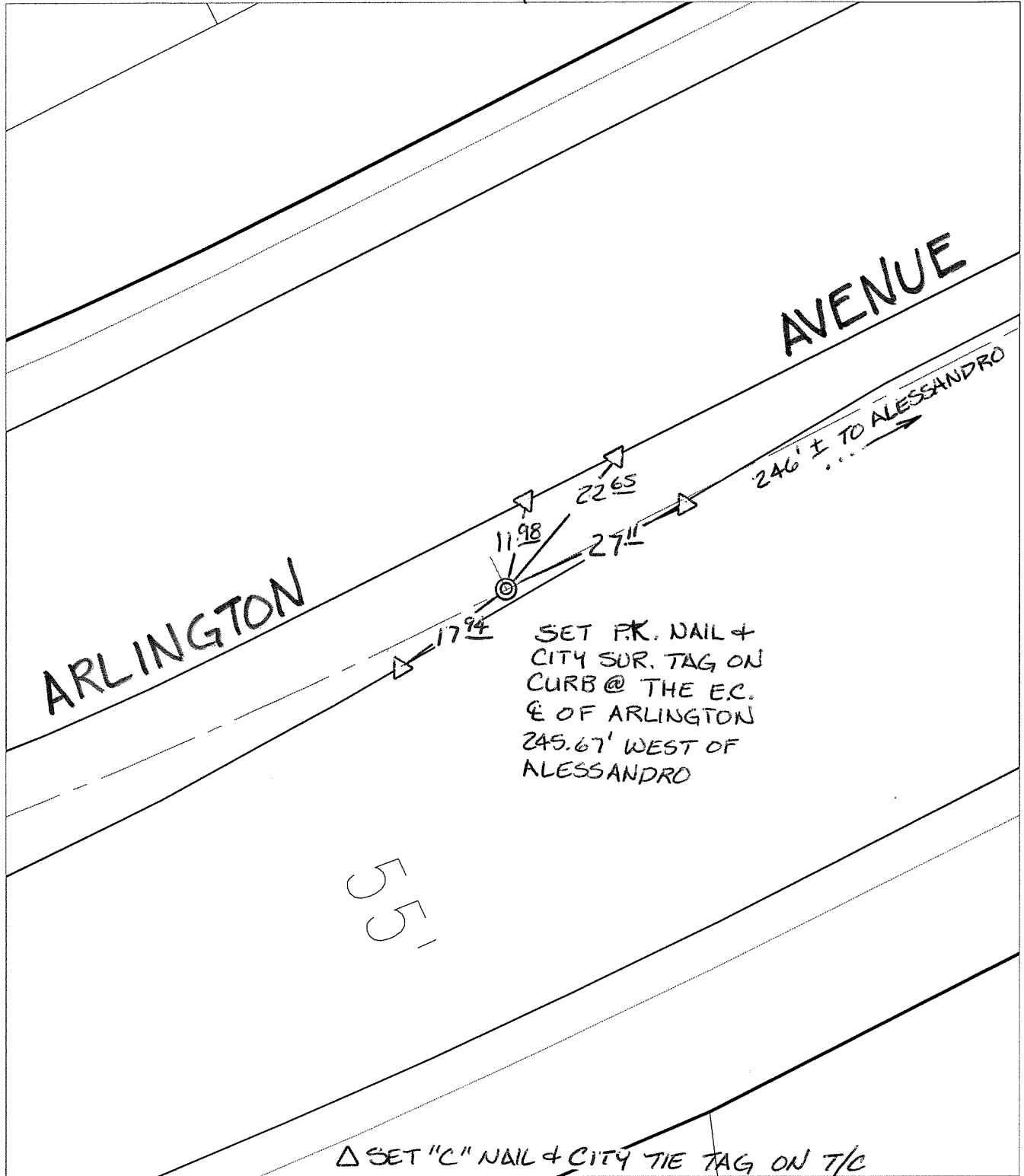


C12424.TIE

Street: ARLINGTON EC 245.67 WEST X-Street WEST OF ALESSANDRO BLVD.

OFFICIAL USE ONLY

SWING TIES



SET P.K. NAIL +
CITY SUR. TAG ON
CURB @ THE EC.
E OF ARLINGTON
245.67' WEST OF
ALESSANDRO


△ SET "C" NAIL + CITY TIE TAG ON T/C

- × FD. Ramset Nail on T/C ● FD. LD. & TK. on T/C P.K. and City Engineer tag to be set @ surface after street construction is complete. (If possible)
- FD. "C" Nail on T/C ○ Set LD. & TK. on T/C

Scale: 1" = 20'
Date: 03/18/11
Drawn by: pw
F.B.:
TR-Sec: T3SR5W-1

OFFICIAL TIE PLAT
CITY OF RIVERSIDE

These ties are for the purpose of perpetuating the found monumentation. No claim is made as to the relationship of the points or lines shown hereon to true boundary locations.



Sheet 1 of 1
Cadme MB: 55-6