

C12425.71F

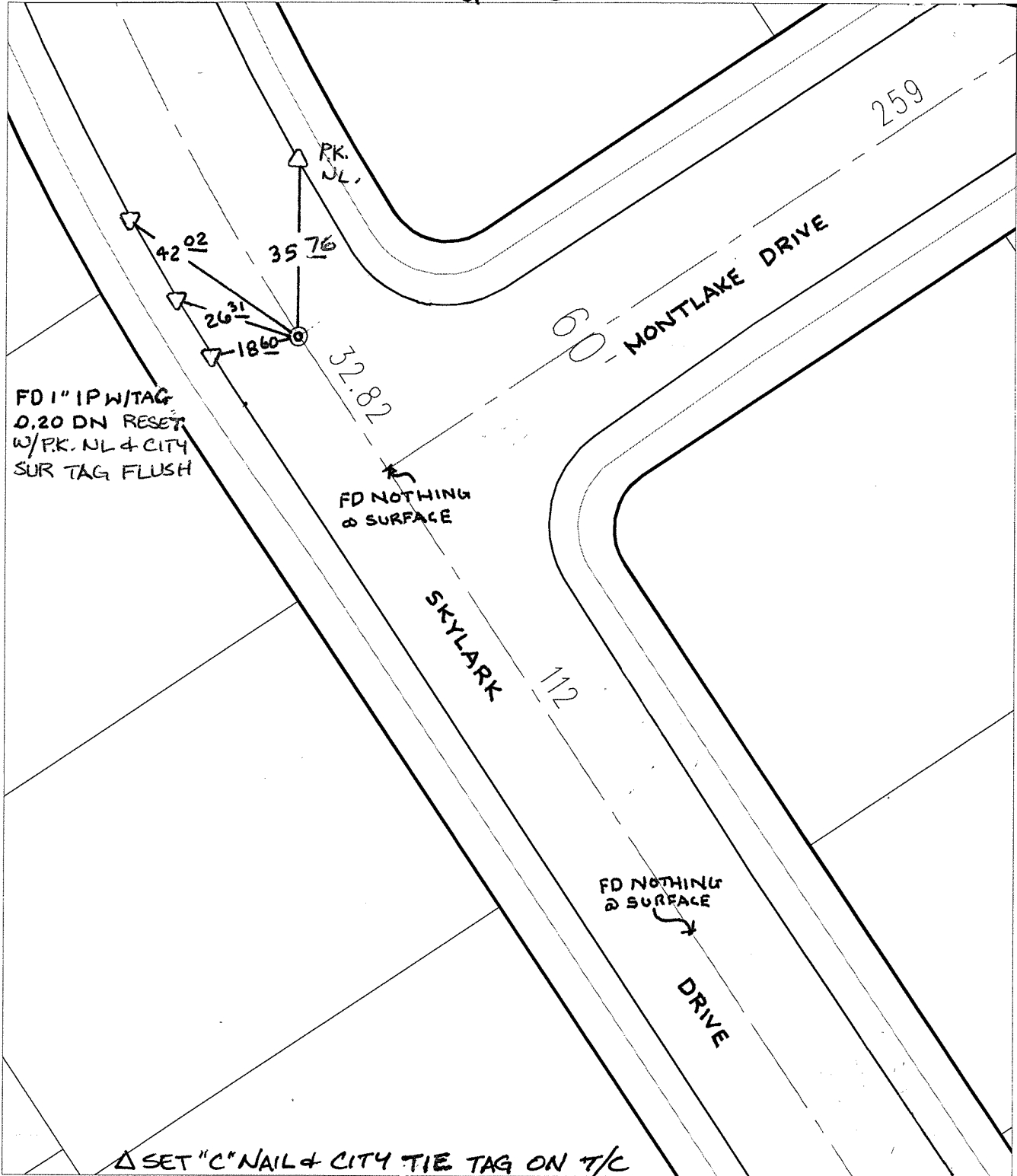
Street:

SKYLARK DRIVE

X-Street:  
OFFICIAL USE ONLY

MONTLAKE DRIVE

SWING TIES



FD 1" IP W/TAG  
0.20 DN RESET  
W/PK. NL & CITY  
SUR TAG FLUSH

FD NOTHING  
@ SURFACE

FD NOTHING  
@ SURFACE

△ SET "C" NAIL & CITY TIE TAG ON T/C

- × FD. Ramset Nail on T/C      ● FD. LD. & TK. on T/C
- FD. "C" Nail on T/C        ○ Set LD. & TK. on T/C

P.K. and City Engineer tag to be set @  
surface after street construction is  
complete. (If possible)

Scale: 1" = 30'

Date: 09/14/06

Drawn by: survey

F.B.:

TR-Sec: T3SR6W-23

## OFFICIAL TIE PLAT

### CITY OF RIVERSIDE

*These ties are for the purpose of perpetuating the found  
monumentation. No claim is made as to the relationship of  
the points or lines shown hereon to true boundary locations.*



Sheet 1 of 1

Cadme MB: 79-5