

Street:

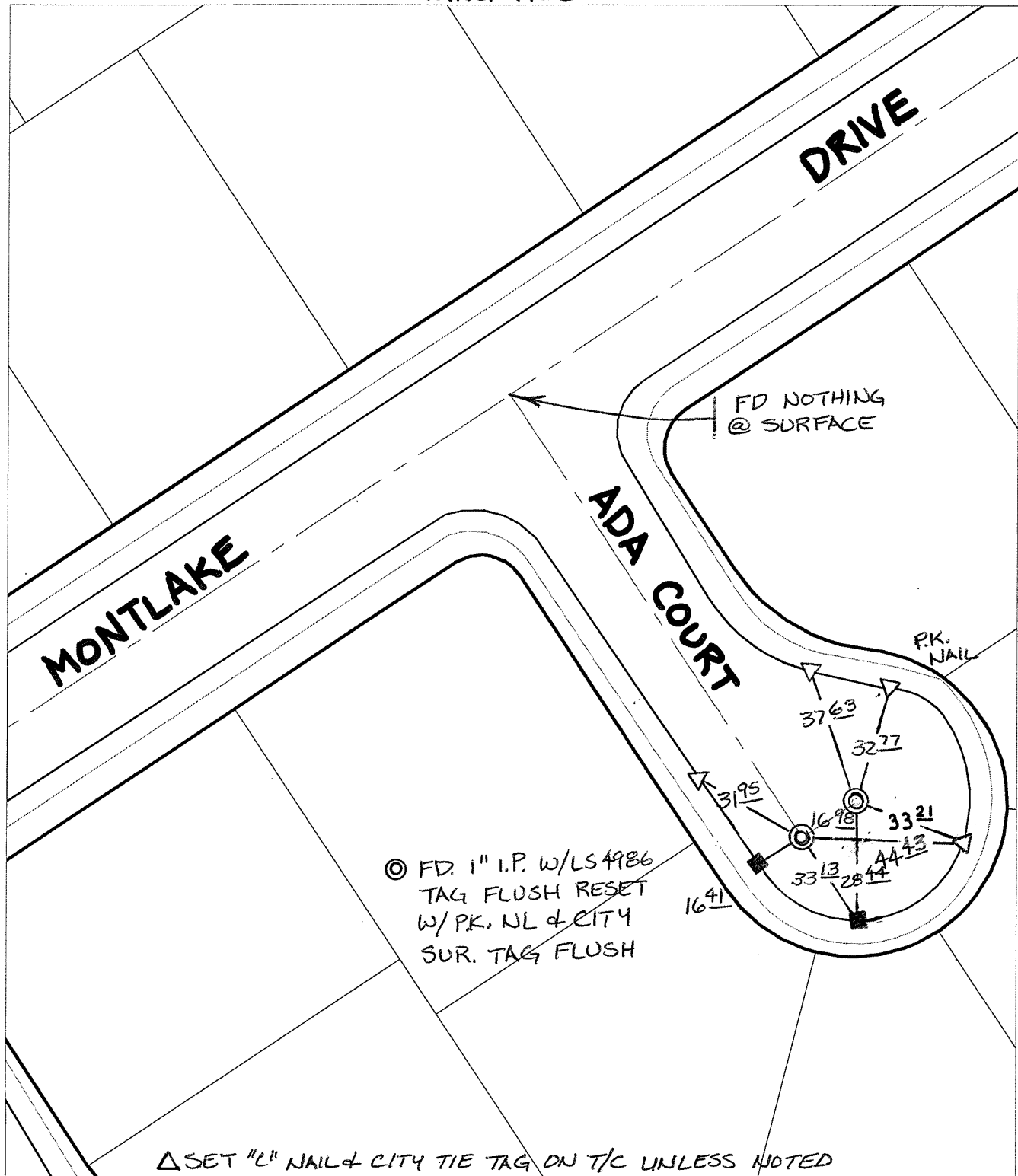
ADA COURT

X-Street:

MONTLAKE DRIVE

OFFICIAL USE ONLY

SWING TIES



◎ FD. 1" I.P. W/LS 4986  
TAG FLUSH RESET  
W/PK. NL & CITY  
SUR. TAG FLUSH

△ SET "L" NAIL & CITY TIE TAG ON T/C UNLESS NOTED

- ✕ FD. Ramset Nail on T/C
  - FD. LD. & TK. on T/C
  - FD. "C" Nail on T/C
  - Set LD. & TK. on T/C
- P.K. and City Engineer tag to be set @ surface after street construction is complete. (If possible)

Scale: 1" = 40'  
Date: 09/14/06  
Drawn by: survey  
F.B.:  
TR-Sec: T3SR6W-23

**OFFICIAL TIE PLAT**  
**CITY OF RIVERSIDE**

*These ties are for the purpose of perpetuating the found monumentation. No claim is made as to the relationship of the points or lines shown hereon to true boundary locations.*

Sheet 1 of 1  
Cadme MB: 79-6