

C12431.TIF

Street:

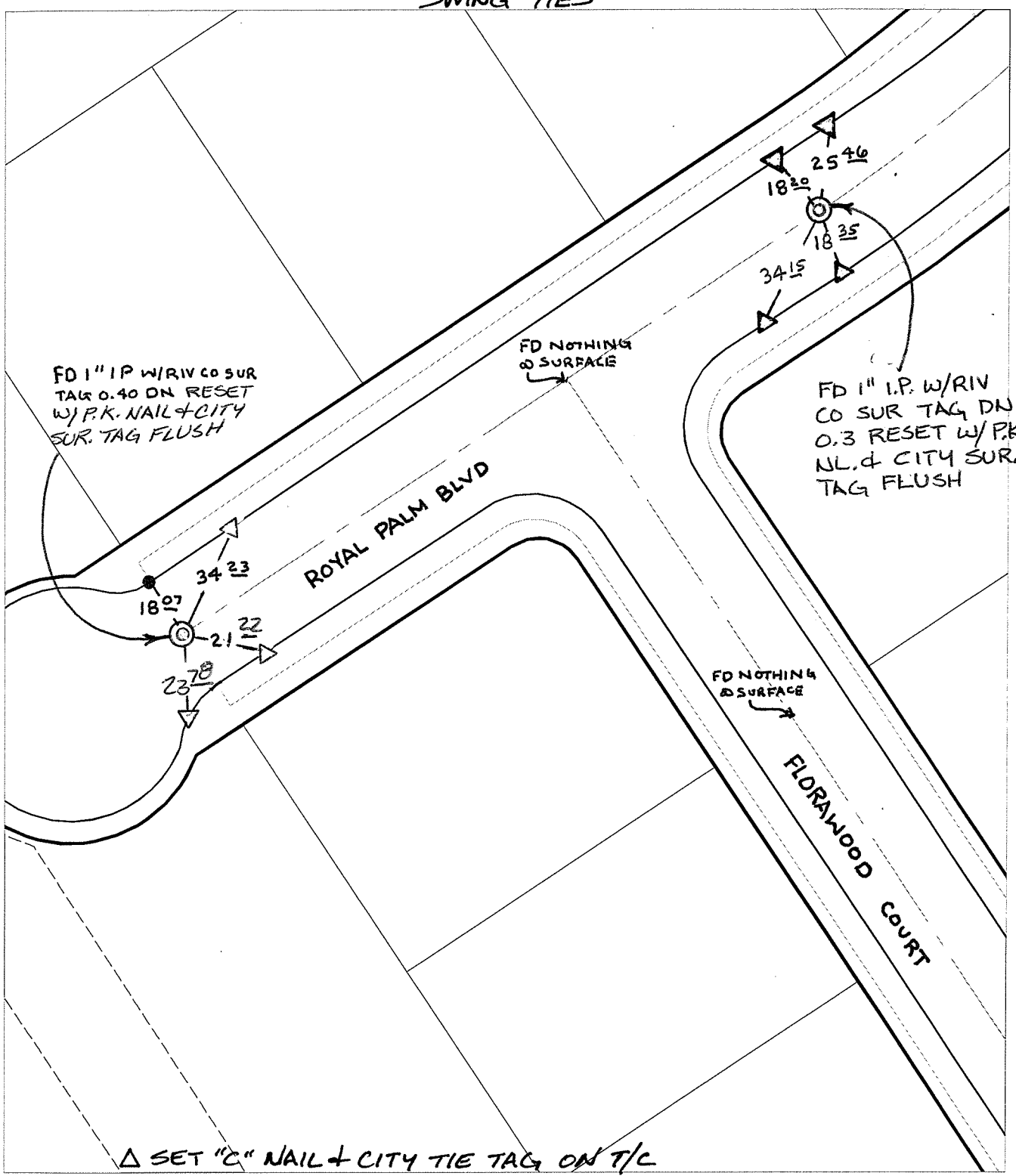
ROYAL PALM BLVD

OFFICIAL USE ONLY

X-Street:

FLORAWOOD COURT

SWING TIES



FD 1" I.P. W/RIV CO SUR TAG 0.40 ON RESET W/P.K. NAIL & CITY SUR. TAG FLUSH

FD NOTHING @ SURFACE

FD 1" I.P. W/RIV CO SUR TAG DN 0.3 RESET W/P.K. NL. & CITY SUR. TAG FLUSH

FD NOTHING @ SURFACE

△ SET "C" NAIL & CITY TIE TAG ON T/C

- × FD. Ramset Nail on T/C
- FD. LD. & TK. on T/C
- FD. "C" Nail on T/C
- Set LD. & TK. on T/C

P.K. and City Engineer tag to be set @ surface after street construction is complete. (If possible)

Scale: 1" = 40'

Date: 10/10/06

Drawn by: LHarris

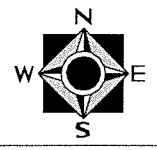
F.B.:

TR-Sec: T3SR6W-23

OFFICIAL TIE PLAT

CITY OF RIVERSIDE

These ties are for the purpose of perpetuating the found monumentation. No claim is made as to the relationship of the points or lines shown hereon to true boundary locations.



Sheet 1 of 1

Cadme MB: 79-5