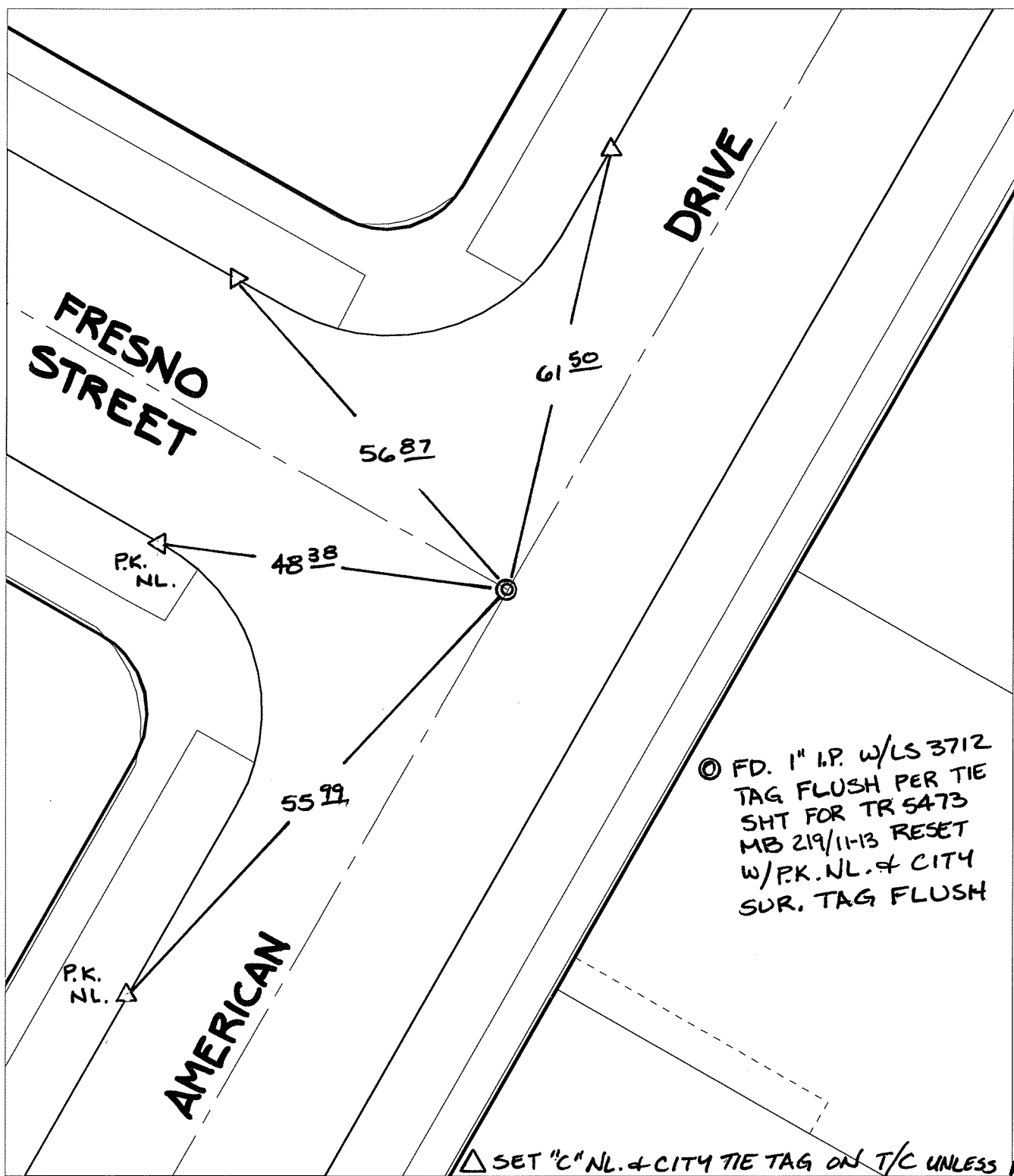


Street:

AMERICAN DR

X-Street:
OFFICIAL USE ONLY

FRESNO ST



⊙ FD. 1" I.P. w/LS 3712
TAG FLUSH PER TIE
SHT FOR TR 5473
MB 219/11-13 RESET
w/P.K. NL. & CITY
SUR. TAG FLUSH


△ SET "C" NL. & CITY TIE TAG ON T/C UNLESS NOTED

- ✕ FD. Ramset Nail on T/C ● FD. LD. & TK. on T/C P.K. and City Engineer tag to be set @ surface after street construction is complete. (if possible)
- FD. "C" Nail on T/C ○ Set LD. & TK. on T/C

Scale: 1" = 20'
Date: 06/06/07
Drawn by: scurtis
F.B.:
TR-Sec: -

OFFICIAL TIE PLAT
CITY OF RIVERSIDE

These ties are for the purpose of perpetuating the found monumentation. No claim is made as to the relationship of the points or lines shown hereon to true boundary locations.



Sheet 1 of 1
Cadme MB: 10-5