

C12457.T1F

Street:

GERANIUM PLACE

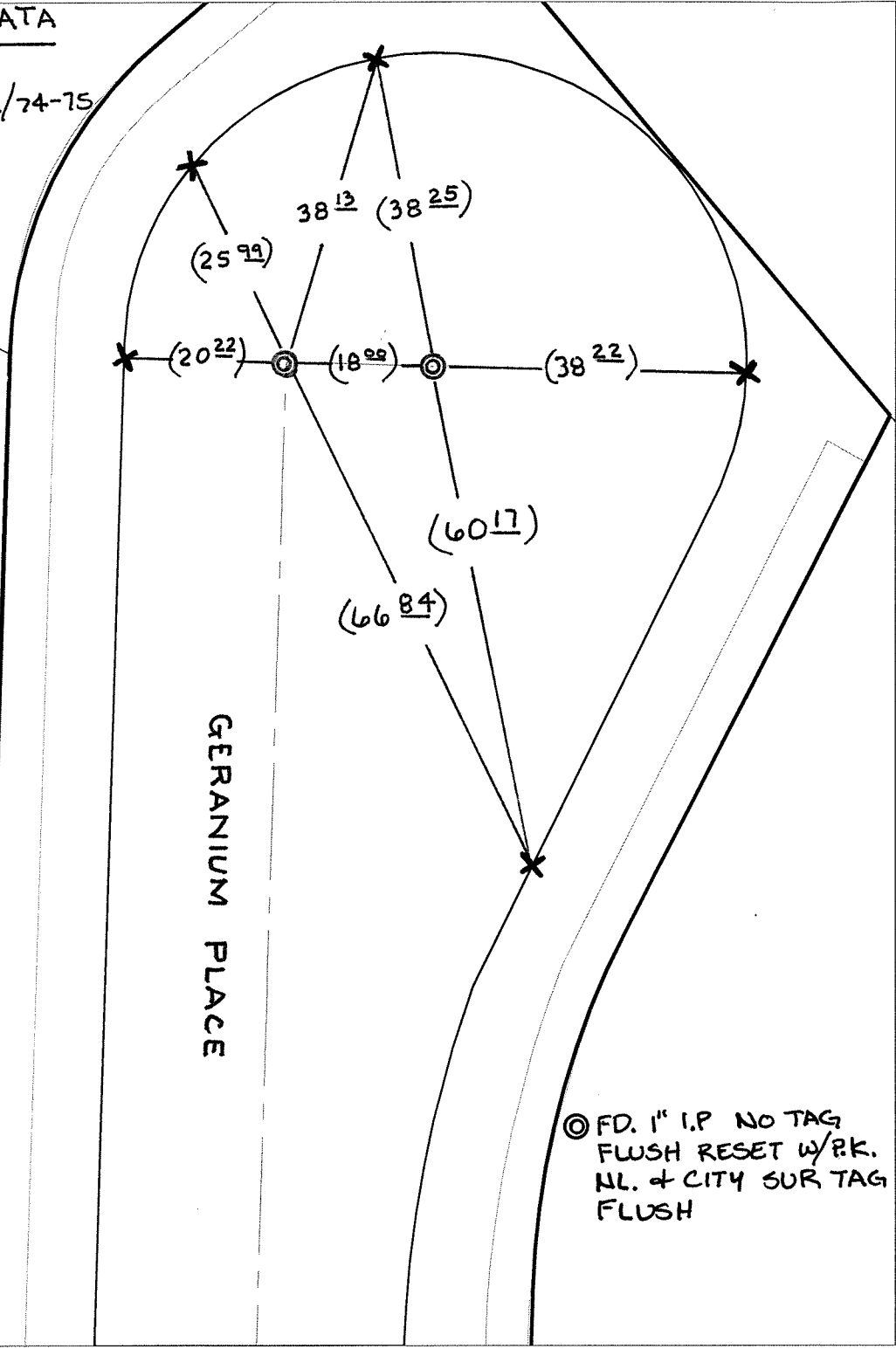
X-Street:  
OFFICIAL USE ONLY

CUL-DE-SAC

SWING TIES

HISTORICAL DATA

-CRFB 1029/231  
-TR 5002-1 (MB81/74-75)



◎ FD. 1" I.P. NO TAG  
FLUSH RESET W/P.K.  
NL. & CITY SUR TAG  
FLUSH

- ✕ FD. Ramset Nail on T/C
  - FD. LD. & TK. on T/C
  - FD. "C" Nail on T/C
  - Set LD. & TK. on T/C
- P.K. and City Engineer tag to be set @ surface after street construction is complete. (If possible)

Scale: 1" = 20'  
 Date: 10/17/06  
 Drawn by: L. Harris  
 F.B.:  
 TR-Sec: T2SR6W-36

**OFFICIAL TIE PLAT**  
 CITY OF RIVERSIDE

*These ties are for the purpose of perpetuating the found monumentation. No claim is made as to the relationship of the points or lines shown hereon to true boundary locations.*



Sheet 1 of 1  
 Cadme MB: 50-1