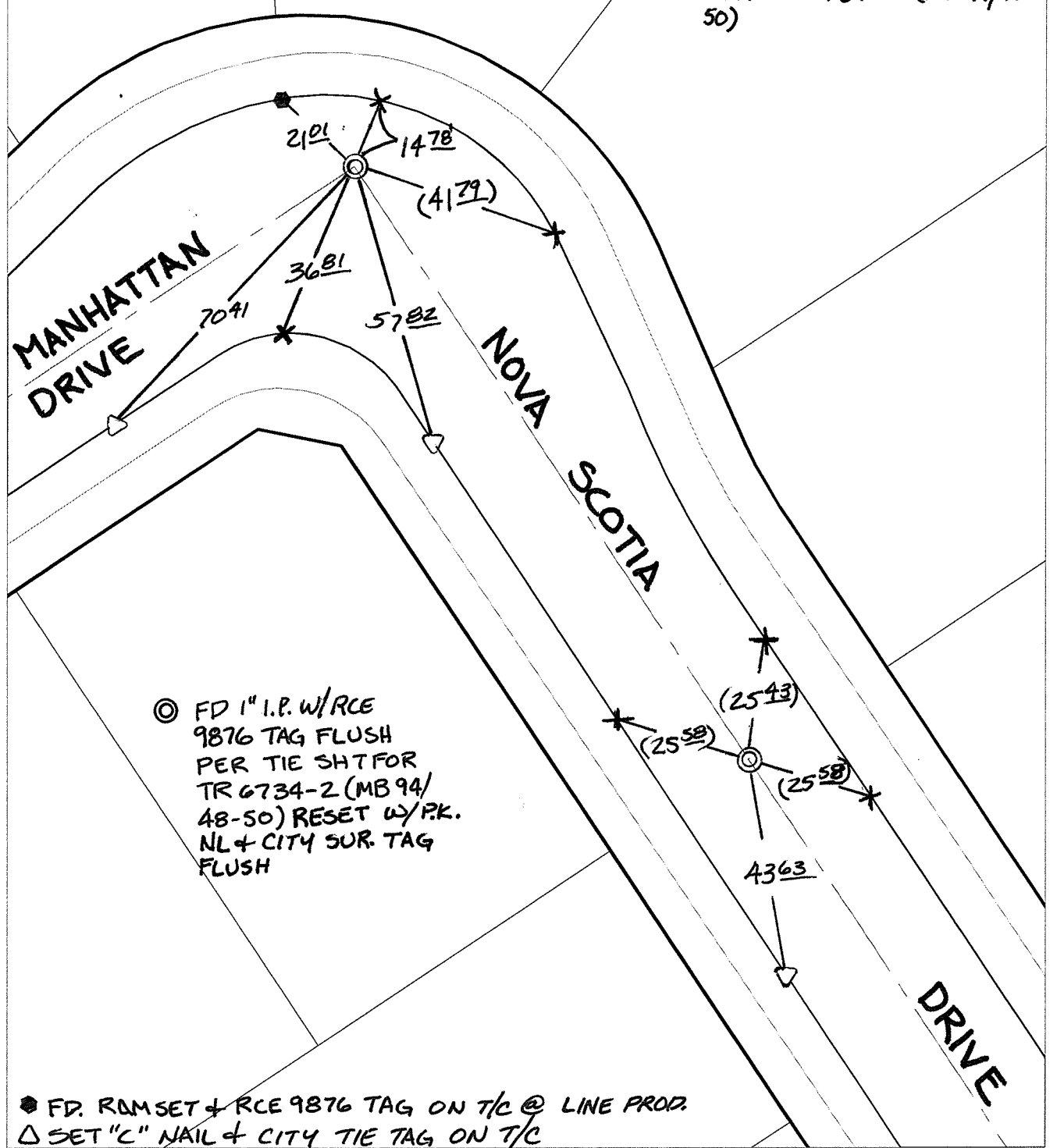


C12493.71E

Street: MANHATTAN DRIVE X-Street: NOVA SCOTIA DRIVE
OFFICIAL USE ONLY

TRANSIT & SWING TIES

() REC DIST. PER. TIE SH. FOR TR 6734-2 (MB 94/48-50)



◎ FD 1" I.P. W/RCE 9876 TAG FLUSH PER TIE SH. FOR TR 6734-2 (MB 94/48-50) RESET w/P.K. NL & CITY SUR. TAG FLUSH

● FD. RAMSET & RCE 9876 TAG ON T/C @ LINE PROD.
△ SET "C" NAIL & CITY TIE TAG ON T/C

- × FD. Ramset Nail on T/C
- FD. LD. & TK. on T/C
- FD. "C" Nail on T/C
- Set LD. & TK. on T/C

P.K. and City Engineer tag to be set @ surface after street construction is complete. (If possible)

Scale: 1" = 30'
 Date: 02/15/09
 Drawn by: pw
 F.B.:
 TR-Sec: T3SR5W-3

OFFICIAL TIE PLAT
 CITY OF RIVERSIDE

These ties are for the purpose of perpetuating the found monumentation. No claim is made as to the relationship of the points or lines shown hereon to true boundary locations.

Sheet 1 of 1
 Cadme MB: 53-8