

C12497, T1E

Street:

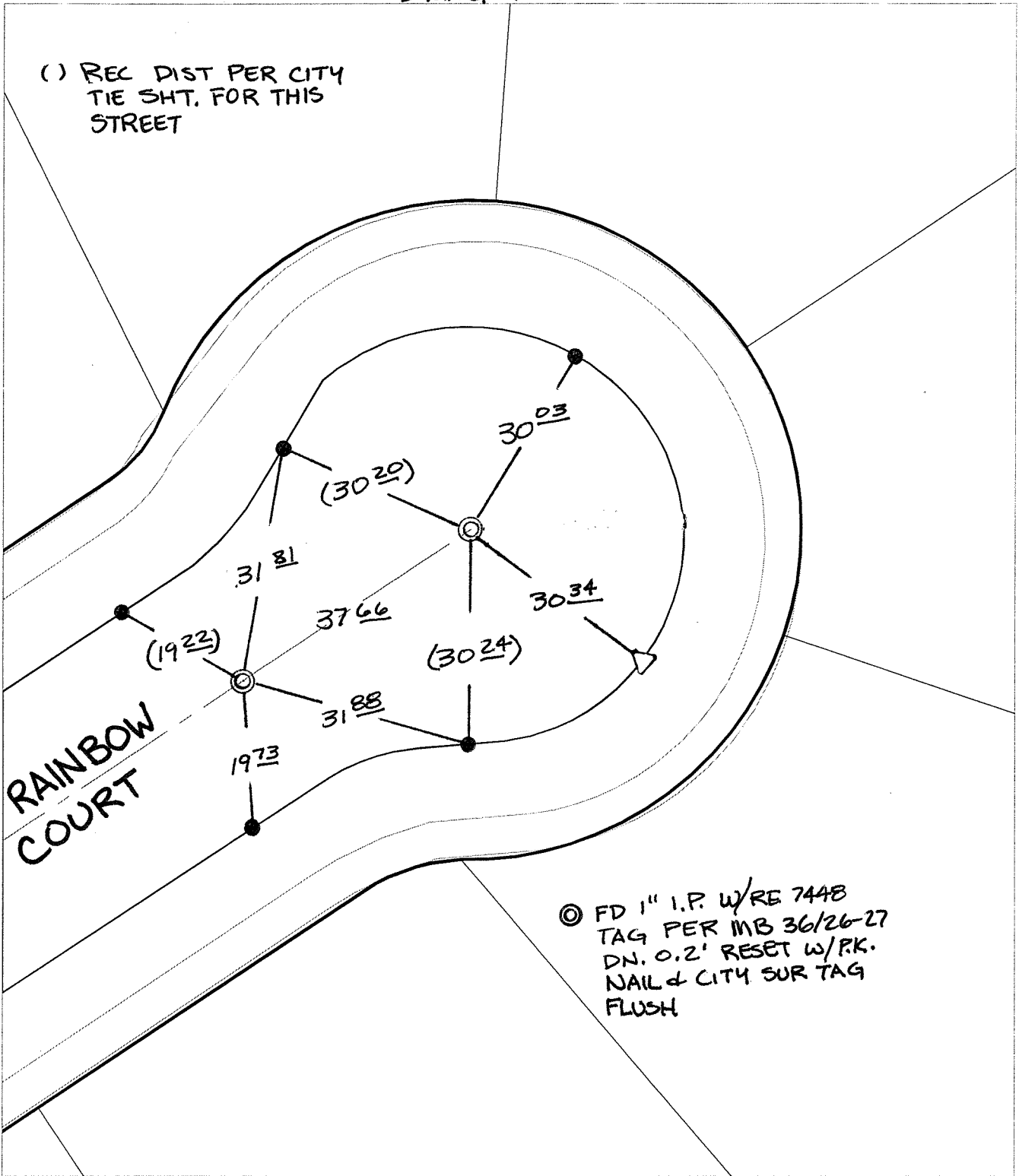
RAINBOW COURT

X-Street:  
OFFICIAL USE ONLY

CUL-DE-SAC

SWING TIES

( ) REC DIST PER CITY  
TIE SHT. FOR THIS  
STREET



⊙ FD 1" I.P. w/RE 7448  
TAG PER MB 36/26-27  
DN. 0.2' RESET w/P.K.  
NAIL & CITY SUR TAG  
FLUSH

- ⊗ FD. Ramset Nail on T/C
- FD. LD. & TK. on T/C
- FD. "C" Nail on T/C
- Set LD. & TK. on T/C

P.K. and City Engineer tag to be set @  
surface after street construction is  
complete. (If possible)

Scale: 1" = 20'  
 Date: 02/16/09  
 Drawn by: pw  
 F.B.:  
 TR-Sec: T3SR5W-3

## OFFICIAL TIE PLAT

### CITY OF RIVERSIDE

*These ties are for the purpose of perpetuating the found  
monumentation. No claim is made as to the relationship of  
the points or lines shown hereon to true boundary locations.*



Sheet 1 of 1  
 Cadme MB: 68-2